

Appendix 5

Cultural Resources Survey

SOUTH MILLIKEN DISTRIBUTION CENTER

Project No. PLN17-20013

INITIAL STUDY

**PHASE I CULTURAL RESOURCES
SURVEY FOR THE SOUTH MILLIKEN
DISTRIBUTION CENTER**

CITY OF EASTVALE, COUNTY OF RIVERSIDE

APNs 156-030-001 and -002

Submitted to:

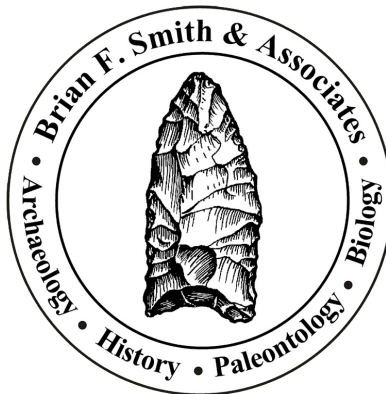
**City of Eastvale
12363 Limonite Avenue, Suite 910
Eastvale, California 91752**

Prepared for:

**Newcastle Partners, Inc.
4740 Green River Road, Suite 118
Corona, California 92880**

Prepared by:

**Brian F. Smith and Associates, Inc.
14010 Poway Road, Suite A
Poway, California 92064**



May 25, 2017; Revised August 10, 2017

Archaeological Database Information

Author(s): Brian F. Smith, M.A.

Prepared by: Brian F. Smith and Associates, Inc.
14010 Poway Road, Suite A
Poway, California 92064
(858) 484-0915

Report Date: May 25, 2017; Revised August 10, 2017

Report Title: Phase I Cultural Resources Survey for the South Milliken
Distribution Center, City of Eastvale, County of Riverside

Prepared for: Newcastle Partners, Inc.
4740 Green River Road, Suite 118
Corona, California 92880

Lead Agency Identifier: APNs 156-030-001 and -002

USGS Quadrangle: USGS 7.5-minute *Guasti, California*

Study Area: 15.8 acres

Key Words: Cultural resources survey; City of Eastvale; negative survey.

Table of Contents

<u>Section</u>	<u>Page</u>
1.0 MANAGEMENT SUMMARY / ABSTRACT	1.0-1
2.0 INTRODUCTION.....	2.0-1
3.0 PROJECT SETTING	3.0-1
3.1 Environmental Setting.....	3.0-1
3.2 Cultural Setting.....	3.0-1
3.2.1 Prehistoric Period.....	3.0-1
3.2.2 Historic Period.....	3.0-5
3.3 Applicable Regulations	3.0-8
3.3.1 California Environmental Quality Act (CEQA).....	3.0-8
3.4 Research Design.....	3.0-10
4.0 METHODOLOGY	4.0-1
4.1 Field Methodology.....	4.0-1
4.2 Records Search.....	4.0-1
4.3 Report Preparation and Recordation	4.0-1
4.4 Native American Consultation.....	4.0-2
5.0 REPORT OF FINDINGS	5.0-1
5.1 Results of the Institutional Records Searches	5.0-1
5.2 Results of the Field Survey	5.0-2
6.0 EVALUATION AND RECOMMENDATIONS.....	6.0-1
7.0 CERTIFICATION.....	7.0-1
8.0 REFERENCES CITED	8.0-1

Appendices

Appendix A – Qualifications of Key Personnel

Appendix B – Archaeological Records Search Results*

Appendix C – NAHC Sacred Lands File Search Results*

**Deleted for public review and bound separately in the Confidential Appendix*

List of Figures

<u>Figure</u>	<u>Description</u>	<u>Page</u>
Figure 2.0–1	General Location Map	2.0–2
Figure 2.0–2	Project Location Map.....	2.0–3
Figure 2.0–3	Conceptual Site Plan.....	2.0–4

List of Plates

<u>Plate</u>	<u>Description</u>	<u>Page</u>
Plate 3.2–1	Jurupa grant (Riverside and San Bernardino counties, California); Juan Bandini, claimant; Case No. 213, Southern District, 1838 to 1879	3.0–7
Plate 5.2–1	View of the project looking east, showing grape vines that have survived.....	5.0–3
Plate 5.2–2	View of the eastern project area showing the disturbed ground surface	5.0–3

List of Tables

<u>Table</u>	<u>Description</u>	<u>Page</u>
Table 5.1–1	Cultural Resources Located Within a One-Mile Radius of the South Milliken Distribution Center Project	5.0–1

1.0 MANAGEMENT SUMMARY/ABSTRACT

The following report describes the results of a Phase I cultural resources assessment conducted by Brian F. Smith and Associates, Inc. (BFSA) for the South Milliken Distribution Center Project. The survey covered 15.8 acres located within the city of Eastvale in Riverside County, California. The proposed development will include an approximately 273,636-square-foot industrial warehouse/logistics building and associated parking on Assessor's Parcel Numbers (APNs) 156-030-001 and -002. This project is located in Section 6, Township 2 South, Range 6 West of the *Guasti, California* USGS Quadrangle topographic map. The property lies immediately east of Milliken Avenue and north of the State Route 60 freeway corridor. BFSA conducted the assessment to locate and record any cultural resources present within the project in compliance with the California Environmental Quality Act (CEQA) and City of Eastvale environmental guidelines.

The cultural resources investigation of the subject property also included a review of a records search performed by the Eastern Information Center (EIC) at the University of California at Riverside (UCR) in order to assess previous archaeological studies and identify any previously recorded cultural resources within the project boundaries or in the immediate vicinity. Nine previous archaeological studies have been conducted within a one-mile radius of the project; however, no previous studies have included any part of the subject property. The records search data also indicated that one previously recorded site (P-33-023961) covers the entire property. This site was recorded as a large vineyard with a water pump dating to the 1950s. No specific associations with any historic properties, individuals, or wineries were made by the archaeologist recording this site, nor was this vineyard identified as historically significant. Further, the elements of the vineyard identified within the Area of Potential Effect (APE) do not constitute a historic resource as defined by CEQA. Aside from remnants of the vineyards, no cultural resources were observed during the archaeological survey of the subject property.

BFSA requested a review of the Sacred Lands Files (SLF) by the Native American Heritage Commission (NAHC). The search did not indicate that any Native American religious, ritual, or other special activities occurred at this location (Appendix C).

The cultural resources survey of the property was conducted on April 25, 2017. Survey conditions were generally good and ground visibility ranged from good to excellent. Past clearing and agricultural use have disturbed the property, including impacts associated with operations of a vineyard. No prehistoric or historic cultural resources were identified during the survey, aside from the water pump and vineyards listed as P-33-023961. Because no significant cultural resources were identified on this property, mitigation measures will not be recommended.

A copy of this report will be permanently filed with the EIC at UCR. All notes, photographs, and other materials related to this project will be curated at the archaeological laboratory of BFSA in Poway, California.

2.0 INTRODUCTION

BFSA conducted a cultural resources assessment of the South Milliken Distribution Center Project situated within the city of Eastvale as part of the environmental review process for the proposed land development. The cultural resources survey and evaluation program for the project were conducted in order to comply with CEQA and City of Eastvale environmental guidelines. The project is located in an area of low archaeological sensitivity, as suggested by known site density and predictive modeling. Although the property previously contained one historic site (P-33-023961, a vineyard), no other cultural resources were observed within the subject property. Further, the elements of the vineyard identified within the APE do not constitute a historic resource as defined by CEQA.

The project consists of 15.8 acres located within the city of Eastvale in Riverside County, California (Figure 2.0–1 and 2.0–2). The development will include an approximately 273,636-square-foot industrial warehouse/logistics building and associated parking on APNs 156-030-001 and -002 (Figure 2.0–3). This project is located in Section 6, Township 2 South, Range 6 West of the *Guasti, California* USGS Quadrangle topographic map. The property lies immediately east of Milliken Avenue and north of the State Route 60 freeway corridor. BFSA conducted the assessment to locate and record any cultural resources present within the project in compliance with the CEQA and City of Eastvale guidelines.

Principal Investigator Brian F. Smith directed the Phase I archaeological assessment for the project with assistance from field archaeologist Clarence Hoff. Brian Smith prepared the text of the report. Kristen Caldwell conducted technical editing and report distribution and Kris Reinicke created the report graphics. Qualifications of key personnel are provided in Appendix A.

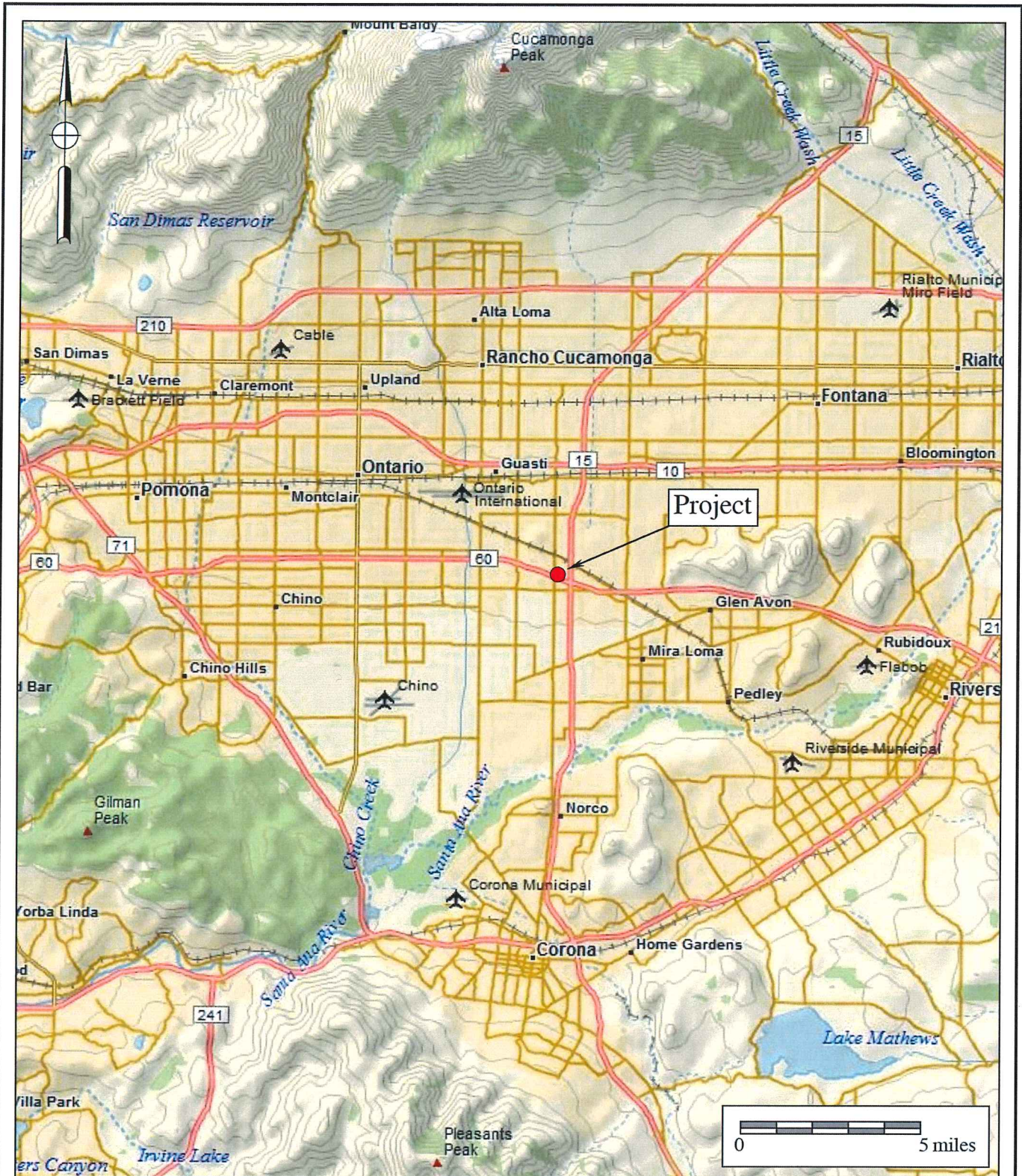


Figure 2.0-1
General Location Map
 The South Milliken Distribution Center Project

DeLorme (1:250,000)



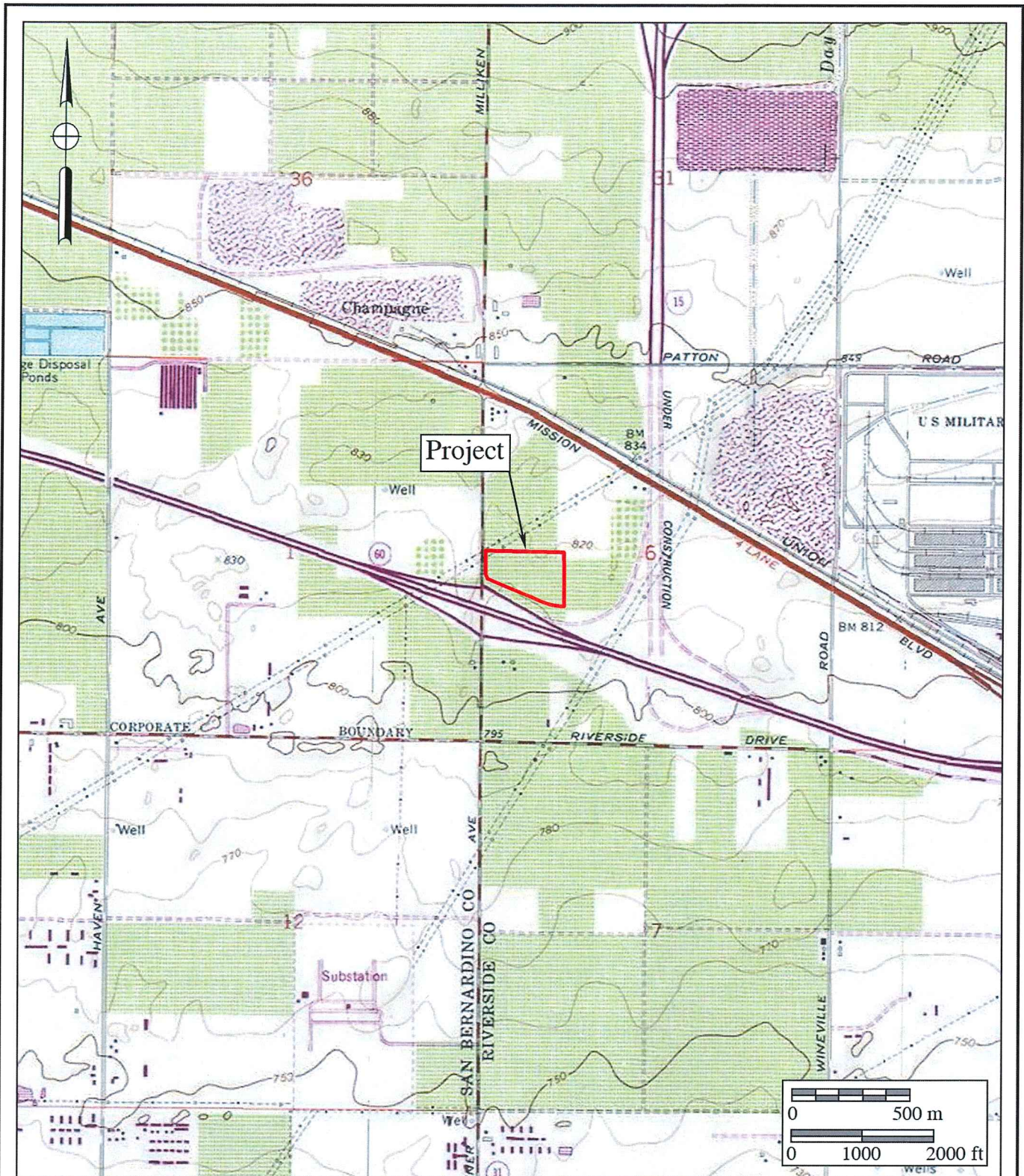


Figure 2.0-2

Project Location Map

The South Milliken Distribution Center Project

USGS *Gausti* Quadrangle (7.5-minute series)



3.0 PROJECT SETTING

The project setting includes the natural physical, geological, and biological contexts of the proposed project, as well as the cultural setting of prehistoric and historic human activities in the general area. The following sections discuss both the environmental and cultural settings at the subject property, the relationship between the two, and the relevance of that relationship to the project.

3.1 Environmental Setting

Riverside County lies in the Peninsular Range Geologic Province of southern California. The range, which lies in a northwest to southeast trend through the county, extends some 1,000 miles from the Raymond-Malibu Fault Zone in western Los Angeles County to the southern tip of Baja California. The subject property is located upon gentle slopes that lie west of the Santa Ana Mountains within the lower elevations of Jurupa Valley. The project area is relatively flat, with the property's lowest point located at its southwest corner and its highest point located at its northern property boundary. Elevations within the project average 820 feet above mean sea level (AMSL). The entire project has been disturbed by past use of the land for agricultural uses, specifically focused upon vineyards. Currently, vegetation within the project area is characterized as primarily introduced species as no native vegetation was observed.

3.2 Cultural Setting

3.2.1 Prehistoric Period

Paleo Indian, Archaic Period Milling Stone Horizon, and the Late Prehistoric Shoshonean groups are the three general cultural periods represented in Riverside County. The following discussion of the cultural history of Riverside County references the San Dieguito Complex, Encinitas Tradition, Milling Stone Horizon, La Jolla Complex, Pauma Complex, and San Luis Rey Complex, since these culture sequences have been used to describe archaeological manifestations in the region. The Late Prehistoric component in the area of Riverside County was represented by the Cahuilla, Gabrielino, and Luiseño Indians.

Absolute chronological information, where possible, will be incorporated into this discussion to examine the effectiveness of continuing to use these terms interchangeably. Reference will be made to the geological framework that divides the culture chronology of the area into four segments: late Pleistocene (20,000 to 10,000 years before the present [YBP]), early Holocene (10,000 to 6,650 YBP), middle Holocene (6,650 to 3,350 YBP), and late Holocene (3,350 to 200 YBP).

Paleo Indian Period (Late Pleistocene: 11,500 to circa 9,000 YBP)

The Paleo Indian Period is associated with the terminus of the late Pleistocene (12,000 to 10,000 YBP). The environment during the late Pleistocene was cool and moist, which allowed

for glaciation in the mountains and the formation of deep, pluvial lakes in the deserts and basin lands (Moratto 1984). However, by the terminus of the late Pleistocene, the climate became warmer, which caused the glaciers to melt, sea levels to rise, greater coastal erosion, large lakes to recede and evaporate, extinction of Pleistocene megafauna, and major vegetation changes (Moratto 1984; Martin 1967, 1973; Fagan 1991). The coastal shoreline at 10,000 YBP, depending upon the particular area of the coast, was near the 30-meter isobath, or two to six kilometers farther west than its present location (Masters 1983).

Paleo Indians were likely attracted to multiple habitat types, including mountains, marshlands, estuaries, and lakeshores. These people likely subsisted using a more generalized hunting, gathering, and collecting adaptation, utilizing a variety of resources including birds, mollusks, and both large and small mammals (Erlandson and Colten 1991; Moratto 1984; Moss and Erlandson 1995).

Archaic Period (Early and Middle Holocene: circa 9,000 to 1,300 YBP)

Between 9,000 and 8,000 YBP, a widespread complex was established in the southern California region, primarily along the coast (Warren and True 1961). This complex is locally known as the La Jolla Complex (Rogers 1939; Moriarty 1966), which is regionally associated with the Encinitas Tradition (Warren 1968) and shared cultural components with the widespread Milling Stone Horizon (Wallace 1955). The coastal expression of this complex focused upon coastal resources and the development of deeply stratified shell middens located primarily around bays and lagoons. This expression appeared in southern California coastal areas at sites that include Topanga Canyon, Newport Bay, Agua Hedionda Lagoon, and some of the Channel Islands. Radiocarbon dates from sites attributed to this complex span a period of more than 7,000 years in this region, beginning over 9,000 YBP.

The Encinitas Tradition is best recognized for its pattern of large coastal sites characterized by shell middens, grinding tools closely associated with the marine resources of the area, cobble-based tools, and flexed human burials (Shumway et al. 1961; Smith and Moriarty 1985). While ground stone tools and scrapers are the most recognized tool types, coastal Encinitas Tradition sites also contain numerous utilized flakes, which may have been used to pry open shellfish. Artifact assemblages at coastal sites indicate a subsistence pattern focused upon shellfish collection and nearshore fishing, suggesting an incipient maritime adaptation with regional similarities with more northern sites of the same period (Koerper et al. 1986). Other artifacts associated with Encinitas Tradition sites include stone bowls, doughnut stones, discoidals, stone balls, and beads made of stone, bone, and shell.

The coastal lagoons in southern California supported large Milling Stone Horizon populations circa 6,000 YBP, as is shown by numerous radiocarbon dates from the many sites adjacent to the lagoons. The ensuing millennia were not stable environmentally, and by 3,000 YBP, many of the coastal sites in central San Diego County had been abandoned (Gallegos 1987, 1992). The abandonment of the area is usually attributed to the sedimentation of coastal lagoons

and the resulting deterioration of fish and mollusk habitat, a situation well documented at Batiquitos Lagoon (Miller 1966; Gallegos 1987). Over a period of 2,000 years at Batiquitos Lagoon, dominant mollusk species occurring in archaeological middens shift from deep-water mollusks (*Argopecten* sp.) to species tolerant of tidal flat conditions (*Chione* sp.), which indicates water depth and temperature changes (Miller 1966; Gallegos 1987). This situation likely occurred for other small drainages (Buena Vista, Agua Hedionda, San Marcos, and Escondido creeks) along the central San Diego coast, where low flow rates did not produce sufficient discharge to flush the lagoons they fed (Buena Vista, Agua Hedionda, Batiquitos, and San Elijo lagoons) (Byrd 1998). Drainages along the northern and southern San Diego coastline were larger and flushed the coastal hydrological features they fed, keeping them open to the ocean and allowing for continued human exploitation (Byrd 1998). Peñasquitos Lagoon exhibits dates as late as 2,355 YBP (Smith and Moriarty 1985). San Diego Bay showed continuous occupation until the close of the Milling Stone Horizon (Gallegos and Kyle 1988). Additionally, data from several drainages in Camp Pendleton suggest a continued occupation of shell midden sites until the close of the period, indicating that coastal sites were not entirely abandoned during this time (Byrd 1998).

By 5,000 YBP, an inland expression of the La Jolla Complex, which exhibits influences from the Campbell Tradition from the north, is evident in the archaeological record. These inland Milling Stone Horizon sites have been termed “Pauma Complex” (True 1958; Warren et al. 1961; Meighan 1954). By definition, Pauma Complex sites share a predominance of grinding implements (manos and metates), lack mollusk remains, have greater tool variety (including atlatl dart points, quarry-based tools, and crescentics), and seem to express a more sedentary lifestyle with a subsistence economy based upon the use of a broad variety of terrestrial resources. Although originally viewed as a separate culture from the coastal La Jolla Complex (True 1980), it appears that these inland sites may be part of a subsistence and settlement system utilized by the coastal peoples. Evidence from the 4S Project in inland San Diego County suggests that these inland sites may represent seasonal components within an annual subsistence round by La Jolla Complex populations (Raven-Jennings et al. 1996). Including both coastal and inland sites of this time period in discussions of the Encinitas Tradition, therefore, provides a more complete appraisal of the settlement and subsistence system exhibited by this cultural complex.

Late Prehistoric Period (Late Holocene: 1,300 YBP to 1790)

Approximately 1,350 YBP, a Shoshonean-speaking group from the Great Basin region moved into Riverside County, marking the transition to the Late Prehistoric Period. This period is characterized by higher population densities and elaborations in social, political, and technological systems. Economic systems diversified and intensified during this period, with the continued elaboration of trade networks, the use of shell-bead currency, and the appearance of more labor-intensive, yet effective, technological innovations. Technological developments

during this period included the introduction of the bow and arrow between A.D. 400 and 600 and the introduction of ceramics. Atlatl darts were replaced by smaller arrow darts, including the Cottonwood series points. Other hallmarks of the Late Prehistoric Period include extensive trade networks as far-reaching as the Colorado River Basin and cremation of the dead.

Protohistoric Period (Late Holocene: 1790 to Present)

Ethnohistoric and ethnographic evidence indicates that Shoshonean-speaking groups occupied portions of Riverside County during the Protohistoric Period, including the Cahuilla, the Gabrielino, and the Luiseño. The geographic boundaries between these groups in pre- and proto-historic times are difficult to place.

At the time of Spanish contact in the sixteenth century, the Cahuilla occupied territory that included the San Bernardino Mountains, Orocopia Mountain, and the Chocolate Mountains to the east, the Salton Sea and Borrego Springs to the south, Palomar Mountain and Lake Mathews to the west, and the Santa Ana River to the north. The Cahuilla were a Takic-speaking people closely related to their Gabrielino and Luiseño neighbors, although relations with the Gabrielino were more intense than with the Luiseño. They differed from the Luiseño and Gabrielino in that their religion was more similar to the Mohave tribes of the eastern deserts than the *Chingichngish* cult of the Luiseño and Gabrielino.

The territory of the Gabrielino, at the time of Spanish contact in the sixteenth century, was located in much of present-day Los Angeles and Orange counties. The southern extent of this group was bounded by Aliso Creek, the eastern extent was located east of present-day San Bernardino along the Santa Ana River, the northern extent included the San Fernando Valley, and the western extent included portions of the Santa Monica Mountains. The Gabrielino also occupied several Channel Islands, including Santa Barbara Island, Santa Catalina Island, San Nicholas Island, and San Clemente Island. Because of their access to certain resources, including a steatite source from Santa Catalina Island, this group was among the wealthiest and most populous aboriginal groups in all of southern California. Trade of materials and resources controlled by the Gabrielino extended as far north as the San Joaquin Valley, as far east as the Colorado River, and as far south as Baja California (Bean and Smith 1978; Kroeber 1976).

The Luiseño were a seasonal hunting and gathering people with cultural elements that were very distinct from the Archaic Period peoples, including cremation, the use of the bow and arrow, and use of the acorn as a main food staple (Moratto 1984). Along the coast, the Luiseño made use of the available marine resources by fishing and collecting mollusks for food. Seasonally available terrestrial resources, including acorns and game, were also sources of nourishment for Luiseño groups. The elaborate kinship and clan systems between the Luiseño and other groups facilitated a wide-reaching trade network that included trade of Obsidian Butte obsidian and other resources from the eastern deserts and steatite from the Channel Islands.

3.2.2 Historic Period

The historic background of the project area begins with the Spanish colonization of Alta California. The first Spanish colonizing expedition reached southern California in 1769 with the intention of converting and civilizing the indigenous populations, as well as expanding the knowledge of and access to new resources in the region (Brigandi 1998). In the late eighteenth century, the San Gabriel (Los Angeles County), San Juan Capistrano (Orange County), and San Luis Rey (San Diego County) missions began colonizing southern California and gradually expanded their use of the interior valley (into what is now western Riverside County) for raising grain and cattle to support the missions (Riverside County n.d.). The San Gabriel Mission claimed lands in what is now Jurupa, Riverside, San Jacinto, and the San Gorgonio Pass, while the San Luis Rey Mission claimed land in what is now Lake Elsinore, Temecula, and Murrieta (American Local History Network: Riverside County, California 1998). The indigenous groups that occupied these lands were recruited by missionaries, converted, and put to work in the missions (Pourade 1964). Throughout this period, the Native American populations were decimated by introduced diseases, a drastic shift in diet resulting in poor nutrition, and social conflicts due to the introduction of an entirely new social order (Cook 1937).

In the mid- to late 1770s, Juan Bautista de Anza passed through much of Riverside County while searching for an overland route from Sonora, Mexico to San Gabriel and Los Angeles, and described fertile valleys, lakes, and sub-desert areas (American Local History Network: Riverside County, California 1998; Riverside County n.d.). In 1797, Father Presidente Lausen, Father Norberto de Santiago, and Corporal Pedro Lisalde led an expedition from Mission San Juan Capistrano through southwestern Riverside County in search of a new mission site before constructing Mission San Luis Rey in northern San Diego County (Brigandi 1998).

While missions were never built in what would become Riverside County (American Local History Network: Riverside County, California 1998), many mission outposts, or *asistencias*, were established in the early years of the nineteenth century to extend the missions' influence to the backcountry (Brigandi 1998). Two outposts that were located in Riverside County include San Jacinto and Temecula.

Mexico gained independence in 1822 and desecularized the missions in 1832, signifying the end of the Mission Period (Brigandi 1998; Riverside County n.d.). By this time, the missions owned some of the best and most fertile land in southern California. In order for California to develop, the land would have to be made productive enough to turn a profit (Brigandi 1998). The new government began distributing the vast mission holdings to wealthy and politically connected Mexican citizens. The "grants" were called "ranchos," of which Jurupa, El Rincon, La Sierra, El Sobrante de San Jacinto, La Laguna (Lake Elsinore), Santa Rosa, Temecula, Pauba, San Jacinto Nuevo y Potrero, and San Jacinto Viejo were located in present-day Riverside County. Many of these ranchos have lent their names to modern-day locales (American Local History Network: Riverside County, California 1998). The first grant in present-day Riverside County was Rancho Jurupa, given to Juan Bandini in 1838. The project area is located within

this grant. The ranchos included in the grant were all located in the valley environments typical of western Riverside County.

The treatment of Native Americans grew worse during the Rancho Period. Most of the Native Americans were forced off of their land or put to work on the now privately owned ranchos, most often as slave labor. In light of the brutal ranchos, the degree to which Native Americans had become dependent upon the mission system is evident when, in 1838, a group of Native Americans from Mission San Luis Rey petitioned government officials in San Diego to relieve suffering at the hands of the rancheros:

We have suffered incalculable losses, for some of which we are in part to be blamed for because many of us have abandoned the Mission ... We plead and beseech you ... to grant us a Rev. Father for this place. We have been accustomed to the Rev. Fathers and to their manner of managing the duties. We labored under their intelligent directions, and we were obedient to the Fathers according to the regulations, because we considered it as good for us. (Brigandi 1998:21)

Native American culture had been disrupted to the point where they could no longer rely upon prehistoric subsistence and social patterns. Not only does this illustrate how dependent the Native Americans had become upon the missionaries, but it also indicates a marked contrast in the way the Spanish treated the Native Americans compared to the Mexican and United States ranchers. Spanish colonialism (missions) is based upon utilizing human resources while integrating them into their society. The ranchers, both Mexican and American, did not accept Native Americans into their social order and used them specifically for the extraction of labor, resources, and profit. Rather than being incorporated, they were either subjugated or exterminated (Cook 1976).

In 1846, war erupted between Mexico and the United States. In 1848, with the signing of the Treaty of Guadalupe Hidalgo, the region was annexed as a territory of the United States, and in 1850, California became a state. These events generated a steady flow of settlers into the area, including gold miners, entrepreneurs, health-seekers, speculators, politicians, adventurers, seekers of religious freedom, and individuals desiring to create utopian colonies.

In early 1852, the Native Americans of southern Riverside County, including the Luiseño and the Cahuilla, thought they had signed a treaty resulting in their ownership of all lands from Temecula to Aguanga east to the desert, including the San Jacinto Valley and the San Gorgonio Pass. The Temecula Treaty also included food and clothing provisions for the Indians. However, Congress never ratified the treaties, and the promise of one large reservation was rescinded (Brigandi 1998).

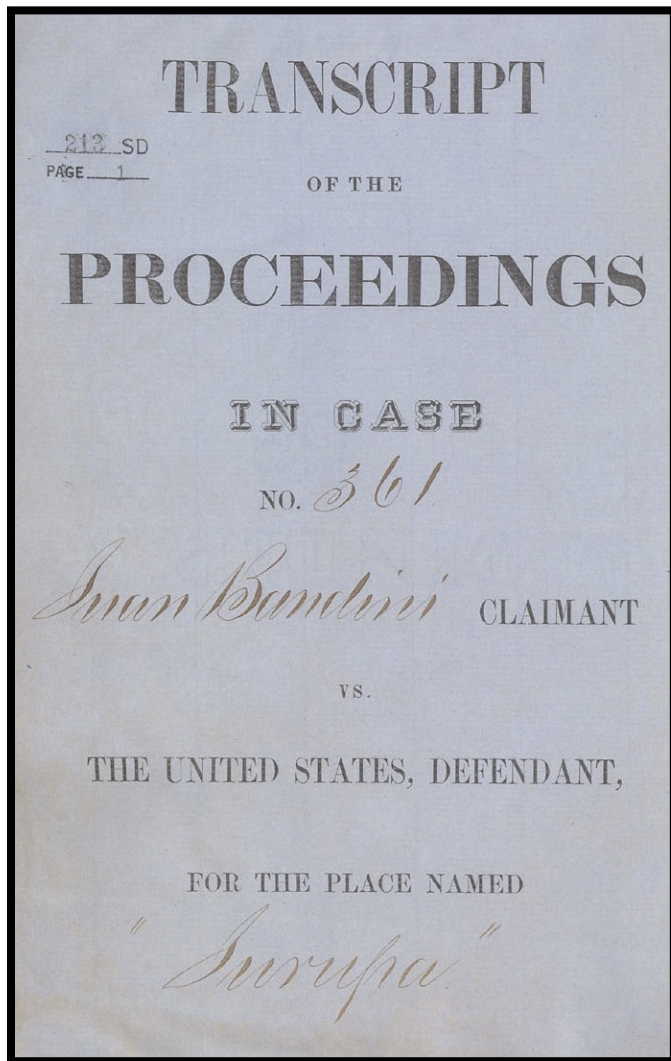


Plate 3.2-1: Jurupa grant (Riverside and San Bernardino counties, California); Juan Bandini, claimant; Case No. 213, Southern District, 1838 to 1879. (Photo Courtesy of University of California, Berkeley)

In 1852, following the law set forth in the Land Act of 1851, Juan Bandini filed a claim for a major portion of his original grant. The U.S. District Court confirmed this claim in 1855. In 1857, Juan Bandini sold his portion of the Jurupa land grant to his son-in-law, Abel Stearns (Elliot 1883 [1965]).

With the completion of the transcontinental railroad in 1869, land speculators, developers, and colonists began to invest in southern California. The first colony in what was to become Riverside County was Riverside itself. Judge John Wesley North, an abolitionist from Tennessee, brought a group of associates and co-investors out to southern California and founded Riverside on part of Rancho Jurupa. A few years after, the navel orange was planted and found to be such a success that it quickly became the agricultural staple of the region (American Local History Network: Riverside County, California 1998).

By the late 1880s and early 1890s, there was growing discontent between Riverside and San Bernardino, its neighbor 10 miles to the north, due to

differences in opinion concerning religion, morality, the Civil War, politics, and fierce competition to attract settlers. After a series of instances in which charges were claimed about unfair use of tax monies to the benefit of only the city of San Bernardino, several people from Riverside decided to investigate the possibility of a new county. In May of 1893, voters living within portions of San Bernardino County (to the north) and San Diego County (to the south) approved the formation of Riverside County. Early business opportunities were linked to the agriculture industry, but commerce, construction, manufacturing, transportation, and tourism also provided a healthy local economy. By the time of Riverside County's formation, Riverside had grown to become the wealthiest city per capita in the country due to the successful cultivation of the navel orange (American Local History Network: Riverside County, California 1998);

Riverside County n.d.).

3.3 Applicable Regulations

Resource importance is assigned to districts, sites, buildings, structures, and objects that possess exceptional value or quality illustrating or interpreting the heritage of Riverside County in history, architecture, archaeology, engineering, and culture. A number of criteria are used in demonstrating resource importance. Specifically, criteria outlined in CEQA provide the guidance for making such a determination. The following sections detail the CEQA criteria that a resource must meet in order to be determined important.

3.3.1 California Environmental Quality Act

According to CEQA (§15064.5a), the term “historical resource” includes the following:

- 1) A resource listed in or determined to be eligible by the State Historical Resources Commission for listing in the California Register of Historical Resources (Public Resources Code SS5024.1, Title 14 CCR, Section 4850 et seq.).
- 2) A resource included in a local register of historical resources, as defined in Section 5020.1(k) of the Public Resources Code, or identified as significant in a historical resource survey meeting the requirements of Section 5024.1(g) of the Public Resources Code, shall be presumed to be historically or culturally significant. Public agencies must treat any such resource as significant unless the preponderance of evidence demonstrates that it is not historically or culturally significant.
- 3) Any object, building, structure, site, area, place, record, or manuscript that a lead agency determines to be historically significant or significant in the architectural, engineering, scientific, economic, agricultural, educational, social, political, military, or cultural annals of California may be considered to be a historical resource, provided the lead agency’s determination is supported by substantial evidence in light of the whole record. Generally, a resource shall be considered by the lead agency to be “historically significant” if the resource meets the criteria for listing on the California Register of Historical Resources (Public Resources Code SS5024.1, Title 14, Section 4852) including the following:
 - a) Is associated with events that have made a significant contribution to the broad patterns of California’s history and cultural heritage;
 - b) Is associated with the lives of persons important in our past;
 - c) Embodies the distinctive characteristics of a type, period, region, or method of construction, or represents the work of an important creative individual, or possesses high artistic values; or
 - d) Has yielded, or may be likely to yield, information important in prehistory or

history.

- 4) The fact that a resource is not listed in, or determined eligible for listing in, the California Register of Historical Resources, not included in a local register of historical resources (pursuant to Section 5020.1(k) of the Public Resources Code), or identified in a historical resources survey (meeting the criteria in Section 5024.1(g) of the Public Resources Code) does not preclude a lead agency from determining that the resource may be a historical resource as defined in Public Resources Code Section 5020.1(j) or 5024.1.

According to CEQA (§15064.5b), a project with an effect that may cause a substantial adverse change in the significance of a historical resource is a project that may have a significant effect on the environment. CEQA defines a substantial adverse change as the following:

- 1) Substantial adverse change in the significance of a historical resource means physical demolition, destruction, relocation, or alteration of the resource or its immediate surroundings such that the significance of a historical resource would be materially impaired.
- 2) The significance of a historical resource is materially impaired when a project:
 - a) Demolishes or materially alters in an adverse manner those physical characteristics of a historical resource that convey its historical significance and that justify its inclusion in, or eligibility for inclusion in, the California Register of Historical Resources;
 - b) Demolishes or materially alters in an adverse manner those physical characteristics that account for its inclusion in a local register of historical resources pursuant to Section 5020.1(k) of the Public Resources Code or its identification in a historical resources survey meeting the requirements of Section 5024.1(g) of the Public Resources Code, unless the public agency reviewing the effects of the project establishes by a preponderance of evidence that the resource is not historically or culturally significant;
 - c) Demolishes or materially alters in an adverse manner those physical characteristics of a historical resource that convey its historical significance and that justify its eligibility for inclusion in the California Register of Historical Resources as determined by a lead agency for purposes of CEQA.

Section 15064.5(c) of CEQA applies to effects on archaeological sites and contains the following additional provisions regarding archaeological sites:

1. When a project will impact an archaeological site, a lead agency shall first determine whether the site is a historical resource, as defined in subsection (a).
2. If a lead agency determines that the archaeological site is a historical resource, it shall refer to the provisions of Section 21084.1 of the Public Resources Code, Section 15126.4 of the guidelines, and the limits contained in Section 21083.2 of the Public Resources Code do not apply.
3. If an archaeological site does not meet the criteria defined in subsection (a), but does meet the definition of a unique archaeological resource in Section 21803.2 of the Public Resources Code, the site shall be treated in accordance with the provisions of Section 21083.2. The time and cost limitations described in Public Resources Code Section 21083.2 (c-f) do not apply to surveys and site evaluation activities intended to determine whether the project location contains unique archaeological resources.
4. If an archaeological resource is neither a unique archaeological nor historical resource, the effects of the project on those resources shall not be considered a significant effect on the environment. It shall be sufficient that both the resource and the effect on it are noted in the Initial Study or Environmental Impact Report, if one is prepared to address impacts on other resources, but they need not be considered further in the CEQA process.

Section 15064.5 (d) and (e) contain additional provisions regarding human remains. Regarding Native American human remains, paragraph (d) provides:

- (d) When an initial study identifies the existence of, or the probable likelihood of, Native American human remains within the project, a lead agency shall work with the appropriate Native Americans as identified by the NAHC, as provided in Public Resources Code SS5097.98. The applicant may develop an agreement for treating or disposing of, with appropriate dignity, the human remains and any items associated with Native American burials with the appropriate Native Americans as identified by the NAHC. Action implementing such an agreement is exempt from:
 - 1) The general prohibition on disinterring, disturbing, or removing human remains from any location other than a dedicated cemetery (Health and Safety Code Section 7050.5)
 - 2) The requirement of CEQA and the Coastal Act.

3.4 Research Design

The primary goal of the research design is to attempt to understand the way in which humans have used the land and resources within the project area through time, as well as to aid in the determination of resource significance. For the current project, the study area under

investigation is the western portion of Riverside County and the northern portion of the city of Eastvale. The scope of work for the archaeological program conducted for the South Milliken Distribution Center Project included the survey of a 15.8-acre area. Given the area involved in this Phase I survey, the research design for this project was limited and general in nature. Because the main objective of the investigation was to identify the presence of and potential impacts to cultural resources, the goal is not necessarily to answer wide-reaching theories regarding the development of early southern California, but to investigate the role and importance of the identified resources. Nevertheless, the assessment of the significance of a resource must take into consideration a variety of characteristics, as well as the ability of the resource to address regional research topics and issues.

Although survey-level investigations are limited in terms of the amount of information available, several specific research questions were developed that could be used to guide the initial investigations of any observed cultural resources. The following research questions take into account the size and location of the project discussed above.

Research Questions:

- Can located cultural resources be situated with a specific time period, population, or individual?
- Do the types of located cultural resources allow a site activity/function to be determined from a preliminary investigation? What are the site activities? What is the site function? What resources were exploited?
- How do the located sites compare to others reported from different surveys conducted in the area?
- How do the located sites fit existing models of settlement and subsistence for valley environments of the region?

Data Needs

At the survey level, the principal research objective is a generalized investigation of changing settlement patterns in both the prehistoric and historic periods within the study area. The overall goal is to understand settlement and resource procurement patterns of the project area occupants. Therefore, adequate information regarding site function, context, and chronology from an archaeological perspective is essential for the investigation. The fieldwork and archival research were undertaken with these primary research goals in mind:

- 1) To identify cultural resources occurring within the project area;
- 2) To determine, if possible, site type and function, context of the deposit, and chronological placement of each cultural resource identified;
- 3) To place each cultural resource identified within a regional perspective; and
- 4) To provide recommendations treatment of each cultural resource identified.

4.0 METHODOLOGY

The cultural resources assessment conducted for the South Milliken Distribution Center Project consisted of a reconnaissance of the property by qualified archaeologists and an institutional records search. This archaeological study conformed to City of Eastvale environmental guidelines, and the statutory requirements of CEQA were followed in evaluating potential impacts.

4.1 Field Methodology

The cultural resources survey of the project was conducted on April 25, 2017. The survey of the entire 15.8-acre property was an intensive pedestrian reconnaissance consisting of a series of parallel transects spaced at approximately five-meter intervals, which covered all areas of the project. Generally, the ground surface was exposed and visibility was good to excellent during the survey. Survey constraints were minimal and the entire property was accessible. Digital photographs were taken to document project conditions during the survey (see Section 5.2).

4.2 Records Search

The records search conducted by the EIC at UCR was reviewed for an area of one mile surrounding the project in order to determine the presence of any previously recorded cultural resources. Results of the records search are provided in Appendix B and discussed in Section 5.1. The EIC also provided the standard review of the National Register of Historic Places and the Office of Historic Preservation Historic Property Directory. Land Patent records held by the Bureau of Land Management (BLM) and accessible through the BLM General Land Office (GLO) website were also reviewed for pertinent project information. In addition, the BFSA research library was also consulted for any relevant historical information.

4.3 Report Preparation and Recordation

This report contains information regarding previous studies, statutory requirements for the project, a brief description of the setting, research methods employed, the overall results of the monitoring program, and a significance evaluation. The report includes all appropriate illustrations and tabular information needed to make a complete and comprehensive presentation of these activities, including the methodologies employed and the personnel involved. A copy of this report will be placed at the EIC at UCR. Any newly recorded sites or sites requiring updated information will be recorded on the appropriate Department of Parks and Recreation (DPR) forms, which will be filed with the EIC.

4.4 Native American Consultation

BFSA requested a review of the SLF by the NAHC to determine if any recorded Native American sacred sites or locations of religious or ceremonial importance are present within one mile of the project, which returned with negative results. Results of the review are provided in Appendix C and discussed in Section 5.1.

5.0 REPORT OF FINDINGS

5.1 Results of the Institutional Records Searches

A records search was conducted by the EIC at UCR. The EIC reported one previously recorded site within the project boundaries (P-33-023961), which was identified as a twentieth century historic vineyard and water pump (Table 5.1–1). The vineyard was tentatively linked to the San Antonio Winery because of proximity; however, the site form for this resource did not provide any evidence of the ownership or origin of this vineyard. McKenna (2013) projected that this area was termed “Champagne” on the 1954 USGS *Ontario* Quadrangle but found no historic data for any area referred to as “Champagne.” The area delineated as P-33-023961 extends well beyond the subject property, but no formal vineyard remains in this area. McKenna noted that information concerning the vineyard is scant and insignificant. Further, the elements of the vineyard identified within the APE do not constitute a historic resource as defined by CEQA. The records search indicates that no other cultural resources have been recorded within a one-mile radius of the project.

The records search also indicated that there have been nine cultural resource studies conducted within a one-mile radius of the subject property. None of the previous studies involved any portions of the project. The complete records search results are provided in Appendix B.

Table 5.1–1

Cultural Resources Located Within a One-Mile
Radius of the South Milliken Distribution Center Project

Site	Description
P-33-029961	Historic vineyard and pump

For the current project, the EIC reviewed the following historic sources:

- The National Register of Historic Places Index
- The Office of Historic Preservation, Archaeological Determinations of Eligibility
- The Office of Historic Preservation, Directory of Properties in the Historic Property Data File
- The 15' USGS *Ontario, California* topographic map (1954)

The Office of Historic Preservation, Archaeological Determinations of Eligibility did not list any historic properties within the project that were as potentially eligible for inclusion on the National Register of Historic Places.

A request for a SLF search was sent to the NAHC. The search results did not indicate the presence of any Native American cultural resources within the project or its one-mile radius. In accordance with the recommendations from the NAHC, BFA contacted all Native American consultants listed in the NAHC response letter. As of the date of this report, no responses have been received. All correspondence is provided in Appendix C.

Given the relatively gentle slopes, valley setting, and minimal amount of exposed bedrock outcrops for the project area, predictive modeling would suggest that if prehistoric sites are present within the project area, they will likely be artifact scatters or specialized resource processing loci that would have developed as a result of prehistoric resource extraction practices. In addition, any historic sites are likely to be surface deposits resulting from rural dumping practices.

5.2 Results of the Field Survey

The cultural resources survey took place on April 25, 2017. The survey was directed by Brian Smith with assistance from Clarence Hoff. The survey of the property was an intensive reconnaissance consisting of a series of parallel survey transects spaced at approximately five-meter intervals, which covered all areas of the project. The entire property was accessible and approximately 85 percent of the ground surface was visible, depending upon the density of occasional clusters of vegetation. The property was primarily characterized by nearly flat to gently sloping ground representative of the Santa Ana River floodplain. There are several surviving grape vines scattered across the property.

The pedestrian survey confirmed that the entire property has been disturbed by the prior vineyard use. This characterization of the property as superficially disturbed is relevant to the observation that no cultural resources were present on the property, aside from the remnant grape vines. Photographs were taken to document project conditions at the time of the survey (see Plates 5.2-1 and 5.2-2). The survey did not result in the identification of any historic or prehistoric cultural resources. The recordation of the subject property and the surrounding area as a historic feature P-33-023961 is not interpreted as an actual historic site. Further, the elements of the vineyard identified within the APE do not constitute a historic resource as defined by CEQA. Historic land uses, such as vineyards, farmland, or citrus groves, are relevant to the understanding of the patterns of land development; however, these are not typically considered to constitute historic sites.



Plate 5.2-1: View of the project looking east, showing grape vines that have survived.



Plate 5.2-2: View of the eastern project area showing the disturbed ground surface.

6.0 EVALUATION AND RECOMMENDATIONS

The Phase I cultural resources survey of the South Milliken Distribution Center Project did not identify any historic or prehistoric sites within the project area. Based upon the records search results from the EIC at UCR, one historic site denoted as P-33-023961 was previously recorded covering the entire project, as well as much of the surrounding area, as a vineyard; however, the site record did not provide any linkage of the vineyard to any historic winery or historically important individual. The resource area defined in the site records has been largely destroyed by the construction of the adjacent highway, roads, and modern development. The recordation of this area as a vineyard does not appear to be relevant to any cultural resources discussion, as the feature is generally removed by modern development and highways, and only a few remnant grape vines have survived. Further, the elements of the vineyard identified within the APE do not constitute a historic resource as defined by CEQA. No cultural resources were identified on the property. It is unlikely that any cultural resources are buried within the property, as no indications were observed during the survey that would suggest historic or prehistoric features or artifacts were present.

The cultural resources study has provided information that forms the basis for the conclusion that the planned development of the South Milliken Distribution Center Project will not affect any significant cultural resources. No resource-specific mitigation measures are recommended as a condition of approval for this project. A mitigation monitoring program for the South Milliken Distribution Center Project will not be recommended because no potential for buried resources was identified.

7.0 CERTIFICATION

I hereby certify that the statements furnished above and in the attached exhibits present the data and information required for this archaeological report, and that the facts, statements, and information presented are true and correct to the best of my knowledge and belief.



Brian F. Smith
Principal Investigator

August 10, 2017

Date

8.0 REFERENCES CITED

American Local History Network: Riverside County, California

- 1998 American Local History Network's Page for Riverside County, California. Electronic document, <http://www.usgennet.org/usa/ca/county/riverside/>, accessed March 28, 2006.

Bean, Lowell John and Charles R. Smith

- 1978 Gabrielino. In *Handbook of North American Indians* 8, edited by Robert F. Heizer. Smithsonian Institution, Washington, D.C.

Brian F. Smith and Associates, Inc.

- Various dates. Research library holdings including Sanborn maps, city directories, published regional histories, aerial photographs, and geologic and paleontological references.

Brigandi, Phil

- 1998 *Temecula: at the Crossroads of History*. Heritage Media Corporation, Encinitas, California.

Bureau of Land Management/General Land Office

- Various dates. Land patent records and plat maps. Accessed online at <http://www.glorerecords.blm.gov>.

Byrd, Brian F.

- 1998 Harvesting the Littoral Landscape During the Late Holocene: New Perspectives from Northern San Diego County. *Journal of California and Great Basin Anthropology* 20(2):195-218.

Cook, Sherburne Friend

- 1937 The Extent and Significance of Disease Among the Indians of Baja California, 1697-1773. *Ibero-Americana* 12. University of California Press, Berkeley, California.

- 1976 *The Conflict Between the California Indian and White Civilization*. University of California Press, Berkeley and Los Angeles, California.

Elliot, Wallace W.

- 1883 *History of San Bernardino and San Diego Counties* [1965 Edition]. Riverside Museum Press, Riverside, California.

Erlandson, Jon M. and Roger H. Colten (editors)

- 1991 An Archaeological Context for Archaeological Sites on the California Coast. In *Hunter-Gatherers of Early Holocene Coastal California*. Perspectives in California Archaeology, Volume 1, Institute of Archaeology, University of California, Los Angeles.

Fagan, Brian M.

- 1991 *Ancient North America: The Archaeology of a Continent*. Thames and Hudson, London.

Gallegos, Dennis R.

- 1987 A Review and Synthesis of Environmental and Cultural Material for the Batiqitos Lagoon Region. In *San Dieguito-La Jolla: Chronology and Controversy*, edited by Dennis R. Gallegos. San Diego County Archaeological Society Research Paper No. 1.

- 1992 Patterns and Implications of Coastal Settlement in San Diego County: 9000 to 1300 Years Ago. In *Essays on the Prehistory of Maritime California*, edited by Terry Jones. Center for Archaeological Research, Davis, California.

Gallegos, Dennis R. and Carolyn E. Kyle

- 1988 Five Thousand Years of Maritime Subsistence at Ballast Point Prehistoric Site SDI-48 (W-164) San Diego, California. Unpublished report on file at the South Coastal Information Center at San Diego State University, San Diego, California.

Koerper, Henry C., Paul E. Langenwaller II, and Adella B. Schroth

- 1986 The Agua Hedionda Project Archaeological Investigations at CA-SDI-5353 and CA-SDI-9649. Unpublished report on file at the South Coastal Information Center at San Diego State University, San Diego, California.

Kroeber, Alfred L.

- 1976 *Handbook of the Indians of California*. Reprinted. Dover Editions, Dover Publications, Inc., New York. Originally published 1925, Bulletin No. 78, U.S. Government Printing Office, Washington, D.C.

Martin, Paul S.

- 1967 Prehistoric Overkill. In *Pleistocene Extinctions: The Search for a Cause*, edited by Paul S. Martin and H.E. Wright. Yale University Press, New Haven.

- 1973 The Discovery of America. *Science* 179(4077):969-974.

Masters, Patricia M.

- 1983 Detection and Assessment of Prehistoric Artifact Sites off the Coast of Southern California. In *Quaternary Coastlines and Marine Archaeology*, edited by Patricia M. Masters and N. C. Fleming, pp. 1-49, Academic Press, New York.

McKenna, Jeanette A.

- 2013 Site form for P-33-023961. On file at the Eastern Information Center at the University of California at Riverside, Riverside, California.

Meighan, Clement W.

- 1954 A Late Complex in Southern California Prehistory. *Southwestern Journal of Anthropology* 10(2).

Miller, Jaquelin Neva

- 1966 *The Present and Past Molluscan Faunas and Environments of Four Southern California Coastal Lagoons*. Master's Thesis, University of California at San Diego.

Moratto, Michael J.

- 1984 *California Archaeology*. Academic Press, New York.

Moriarty, James R., III

- 1966 Culture Phase Divisions Suggested by Topological Change Coordinated with Stratigraphically Controlled Radiocarbon Dating in San Diego. *Anthropological Journal of Canada* 4(4):20-30.

Moss, Madonna L. and Jon M. Erlandson

- 1995 Reflections on North American Pacific Coast Prehistory. *Journal of World Prehistory* 9(1):1-45.

Pourade, Richard F.

- 1964 *The Glory Years*. Union-Tribune Publishing Company, San Diego, California.

Raven-Jennings, Shelly, Brian F. Smith, and Johnna L. Buysse

- 1996 The Results of a Cultural Resource Study at the 4S Ranch, Rancho Bernardo, County of San Diego. Unpublished report on file at the South Coastal Information Center at San Diego State University, San Diego, California.

Riverside County

- N.d. Welcome to Riverside County, California: Riverside County History. Electronic document, http://www.co.riverside.ca.us/county_info/history.asp, accessed March 28, 2006.

Rogers, Malcolm J.

- 1939 Early Lithic Industries of the Lower Basin of the Colorado River and Adjacent Desert Areas. In *San Diego Museum Papers* (No. 3 – 1989 printing). San Diego Museum of Man, San Diego, California.

Shumway, George, Carl L. Hubbs, and James R. Moriarty, III

- 1961 Scripps Estate Site, San Diego, California: A La Jolla Site Dated 5,460-7,370 Years Before the Present. *Annals of the New York Academy of Sciences* 93(3).

Smith, Brian F. and James R. Moriarty, III

- 1985 The Archaeological Excavations at Site W-20, Sierra Del Mar. Unpublished report on file at the South Coastal Information Center at San Diego State University, San

Diego, California.

True, Delbert L.

1958 An Early Complex in San Diego County, California. *American Antiquity* 23(3).

1980 The Pauma Complex in Northern San Diego County. *Journal of New World Archaeology* 3(4):1-39.

Wallace, William J.

1955 A Suggested Chronology for Southern California Coastal Archaeology. *Southwestern Journal of Anthropology* 11:214-230.

Warren, Claude N.

1968 Cultural Tradition and Ecological Adaptation on the Southern Coast. In *Archaic Prehistory in the Western United States*, edited by C. I. Williams. *Eastern New Mexico University Contributions in Anthropology* 1(3):1-14.

Warren, Claude N. and D.L. True

1961 The San Dieguito Complex and its Place in California Prehistory. In *Archaeological Survey Annual Report 1960-1961*. University of California Press, Los Angeles, California.

Warren, Claude N., D.L. True, and Ardith A. Eudey

1961 Early Gathering Complexes of Western San Diego County: Results and Interpretations of an Archaeological Survey. *Archaeological Survey Annual Report 1960-1961*. University of California, Los Angeles.

APPENDIX A

Qualifications of Key Personnel

Brian F. Smith, MA

Owner, Principal Investigator

Brian F. Smith and Associates, Inc.

14010 Poway Road • Suite A •

Phone: (858) 679-8218 • Fax: (858) 679-9896 • E-Mail: bsmith@bfsa-ca.com



Education

Master of Arts, History, University of San Diego, California	1982
Bachelor of Arts, History, and Anthropology, University of San Diego, California	1975

Professional Memberships

Society for California Archaeology

Experience

Principal Investigator Brian F. Smith and Associates, Inc.	1977–Present Poway, California
---	---

Brian F. Smith is the owner and principal historical and archaeological consultant for Brian F. Smith and Associates. Over the past 32 years, he has conducted over 2,500 cultural resource studies in California, Arizona, Nevada, Montana, and Texas. These studies include every possible aspect of archaeology from literature searches and large-scale surveys to intensive data recovery excavations. Reports prepared by Mr. Smith have been submitted to all facets of local, state, and federal review agencies, including the US Army Corps of Engineers, the Bureau of Land Management, the Bureau of Reclamation, the Department of Defense, and the Department of Homeland Security. In addition, Mr. Smith has conducted studies for utility companies (Sempra Energy) and state highway departments (CalTrans).

Professional Accomplishments

These selected major professional accomplishments represent research efforts that have added significantly to the body of knowledge concerning the prehistoric life ways of cultures once present in the Southern California area and historic settlement since the late 18th century. Mr. Smith has been principal investigator on the following select projects, except where noted.

Downtown San Diego Mitigation and Monitoring Reporting Programs: Large numbers of downtown San Diego mitigation and monitoring projects submitted to the Centre City Development Corporation, some of which included Strata (2008), Hotel Indigo (2008), Lofts at 707 10th Avenue Project (2007), Breeza (2007), Bayside at the Embarcadero (2007), Aria (2007), Icon (2007), Vantage Pointe (2007), Aperture (2007), Sapphire Tower (2007), Lofts at 655 Sixth Avenue (2007), Metrowork (2007), The Legend (2006), The Mark (2006), Smart Corner (2006), Lofts at 677 7th Avenue (2005), Aloft on Cortez Hill (2005), Front and

Beech Apartments (2003), Bella Via Condominiums (2003), Acqua Vista Residential Tower (2003), Northblock Lofts (2003), Westin Park Place Hotel (2001), Parkloft Apartment Complex (2001), Renaissance Park (2001), and Laurel Bay Apartments (2001).

Archaeology at the Padres Ballpark: Involved the analysis of historic resources within a seven-block area of the "East Village" area of San Diego, where occupation spanned a period from the 1870s to the 1940s. Over a period of two years, BFSA recovered over 200,000 artifacts and hundreds of pounds of metal, construction debris, unidentified broken glass, and wood. Collectively, the Ballpark Project and the other downtown mitigation and monitoring projects represent the largest historical archaeological program anywhere in the country in the past decade (2000-2007).

4S Ranch Archaeological and Historical Cultural Resources Study: Data recovery program consisted of the excavation of over 2,000 square meters of archaeological deposits that produced over one million artifacts, containing primarily prehistoric materials. The archaeological program at 4S Ranch is the largest archaeological study ever undertaken in the San Diego County area and has produced data that has exceeded expectations regarding the resolution of long-standing research questions and regional prehistoric settlement patterns.

Charles H. Brown Site: Attracted international attention to the discovery of evidence of the antiquity of man in North America. Site located in Mission Valley, in the city of San Diego.

Del Mar Man Site: Study of the now famous Early Man Site in Del Mar, California, for the San Diego Science Foundation and the San Diego Museum of Man, under the direction of Dr. Spencer Rogers and Dr. James R. Moriarty.

Old Town State Park Projects: Consulting Historical Archaeologist. Projects completed in the Old Town State Park involved development of individual lots for commercial enterprises. The projects completed in Old Town include Archaeological and Historical Site Assessment for the Great Wall Cafe (1992), Archaeological Study for the Old Town Commercial Project (1991), and Cultural Resources Site Survey at the Old San Diego Inn (1988).

Site W-20, Del Mar, California: A two-year-long investigation of a major prehistoric site in the Del Mar area of the city of San Diego. This research effort documented the earliest practice of religious/ceremonial activities in San Diego County (circa 6,000 years ago), facilitated the projection of major non-material aspects of the La Jolla Complex, and revealed the pattern of civilization at this site over a continuous period of 5,000 years. The report for the investigation included over 600 pages, with nearly 500,000 words of text, illustrations, maps, and photographs documenting this major study.

City of San Diego Reclaimed Water Distribution System: A cultural resource study of nearly 400 miles of pipeline in the city and county of San Diego.

Master Environmental Assessment Project, City of Poway: Conducted for the City of Poway to produce a complete inventory of all recorded historic and prehistoric properties within the city. The information was used in conjunction with the City's General Plan Update to produce a map matrix of the city showing areas of high, moderate, and low potential for the presence of cultural resources. The effort also included the development of the City's Cultural Resource Guidelines, which were adopted as City policy.

Draft of the City of Carlsbad Historical and Archaeological Guidelines: Contracted by the City of Carlsbad to produce the draft of the City's historical and archaeological guidelines for use by the Planning Department of the City.

The Mid-Bayfront Project for the City of Chula Vista: Involved a large expanse of undeveloped agricultural land situated between the railroad and San Diego Bay in the northwestern portion of the city. The study included the analysis of some potentially historic features and numerous prehistoric sites.

Cultural Resources Survey and Test of Sites Within the Proposed Development of the Audie Murphy Ranch, Riverside County, California: Project manager/director of the investigation of 1,113.4 acres and 43 sites, both prehistoric and historic—including project coordination; direction of field crews; evaluation of sites for significance based on County of Riverside and CEQA guidelines; assessment of cupule, pictograph, and rock shelter sites, co-authoring of cultural resources project report. February-September 2002.

Cultural Resources Evaluation of Sites Within the Proposed Development of the Otay Ranch Village 13 Project, San Diego County, California: Project manager/director of the investigation of 1,947 acres and 76 sites, both prehistoric and historic—including project coordination and budgeting; direction of field crews; assessment of sites for significance based on County of San Diego and CEQA guidelines; co-authoring of cultural resources project report. May-November 2002.

Cultural Resources Survey for the Remote Video Surveillance Project, El Centro Sector, Imperial County: Project manager/director for a survey of 29 individual sites near the U.S./Mexico Border for proposed video surveillance camera locations associated with the San Diego Border barrier Project—project coordination and budgeting; direction of field crews; site identification and recordation; assessment of potential impacts to cultural resources; meeting and coordinating with U.S. Army Corps of Engineers, U.S. Border Patrol, and other government agencies involved; co-authoring of cultural resources project report. January, February, and July 2002.

Cultural Resources Survey and Test of Sites Within the Proposed Development of the Menifee West GPA, Riverside County, California: Project manager/director of the investigation of nine sites, both prehistoric and historic—including project coordination and budgeting; direction of field crews; assessment of sites for significance based on County of Riverside and CEQA guidelines; historic research; co-authoring of cultural resources project report. January-March 2002.

Mitigation of An Archaic Cultural Resource for the Eastlake III Woods Project for the City of Chula Vista, California: Project archaeologist/ director—including direction of field crews; development and completion of data recovery program including collection of material for specialized faunal and botanical analyses; assessment of sites for significance based on CEQA guidelines; management of artifact collections cataloging and curation; data synthesis; co-authoring of cultural resources project report, in prep. September 2001-March 2002.

Cultural Resources Survey and Test of Sites Within the Proposed French Valley Specific Plan/EIR, Riverside County, California: Project manager/director of the investigation of two prehistoric and three historic sites—including project coordination and budgeting; survey of project area; Native American consultation; direction of field crews; assessment of sites for significance based on CEQA guidelines; cultural resources project report in prep. July-August 2000.

Cultural Resources Survey and Test of Sites Within the Proposed Lawson Valley Project, San Diego County, California: Project manager/director of the investigation of 28 prehistoric and two historic sites—including project coordination; direction of field crews; assessment of sites for significance based on CEQA guidelines; cultural resources project report in prep. July-August 2000.

Cultural Resource Survey and Geotechnical Monitoring for the Mohyi Residence Project, La Jolla, California: Project manager/director of the investigation of a single-dwelling parcel—including project coordination; field survey; assessment of parcel for potentially buried cultural deposits; monitoring of geotechnical borings; authoring of cultural resources project report. Brian F. Smith and Associates, San Diego, California. June 2000.

Enhanced Cultural Resource Survey and Evaluation for the Prewitt/Schmucker/Cavadias Project, La Jolla, California: Project manager/director of the investigation of a single-dwelling parcel—including project coordination; direction of field crews; assessment of parcel for potentially buried cultural deposits; authoring of cultural resources project report. June 2000.

Cultural Resources Survey and Test of Sites Within the Proposed Development of the Menifee Ranch, Riverside County, California: Project manager/director of the investigation of one prehistoric and five historic sites—included project coordination and budgeting; direction of field crews; feature recordation; historic structure assessments; assessment of sites for significance based on CEQA guidelines; historic research; co-authoring of cultural resources project report. February-June 2000.

Salvage Mitigation of a Portion of the San Diego Presidio Identified During Water Pipe Construction for the City of San Diego, California: Project archaeologist/director—included direction of field crews; development and completion of data recovery program; management of artifact collections cataloging and curation; data synthesis and authoring of cultural resources project report in prep. April 2000.

Enhanced Cultural Resource Survey and Evaluation for the Tyrian 3 Project, La Jolla, California: Project manager/director of the investigation of a single-dwelling parcel—included project coordination; assessment of parcel for potentially buried cultural deposits; authoring of cultural resources project report. April 2000.

Enhanced Cultural Resource Survey and Evaluation for the Lamont 5 Project, Pacific Beach, California: Project manager/director of the investigation of a single-dwelling parcel—included project coordination; assessment of parcel for potentially buried cultural deposits; authoring of cultural resources project report. April 2000.

Enhanced Cultural Resource Survey and Evaluation for the Reiss Residence Project, La Jolla, California: Project manager/director of the investigation of a single-dwelling parcel—included project coordination; assessment of parcel for potentially buried cultural deposits; authoring of cultural resources project report. March-April 2000.

Salvage Mitigation of a Portion of Site SDM-W-95 (CA-SDI-211) for the Poinsettia Shores Santalina Development Project and Caltrans, Carlsbad, California: Project archaeologist/ director—included direction of field crews; development and completion of data recovery program; management of artifact collections cataloging and curation; data synthesis and authoring of cultural resources project report in prep. December 1999-January 2000.

Survey and Testing of Two Prehistoric Cultural Resources for the Airway Truck Parking Project, Otay Mesa, California: Project archaeologist/director—included direction of field crews; development and completion of testing recovery program; assessment of site for significance based on CEQA guidelines; authoring of cultural resources project report, in prep. December 1999-January 2000.

Cultural Resources Phase I and II Investigations for the Tin Can Hill Segment of the Immigration and Naturalization Services Triple Fence Project Along the International Border, San Diego County, California: Project manager/director for a survey and testing of a prehistoric quarry site along the border—NRHP eligibility assessment; project coordination and budgeting; direction of field crews; feature recordation; meeting and coordinating with U.S. Army Corps of Engineers; co-authoring of cultural resources project report. December 1999-January 2000.

Mitigation of a Prehistoric Cultural Resource for the Westview High School Project for the City of San Diego, California: Project archaeologist/ director—included direction of field crews; development and completion of data recovery program including collection of material for specialized faunal and botanical analyses; assessment of sites for significance based on CEQA guidelines; management of artifact collections cataloging and curation; data synthesis; co-authoring of cultural resources project report, in prep. October 1999-January 2000.

Mitigation of a Prehistoric Cultural Resource for the Otay Ranch SPA-One West Project for the City of Chula Vista, California: Project archaeologist/director—included direction of field crews; development of data recovery program; management of artifact collections cataloging and curation; assessment of

site for significance based on CEQA guidelines; data synthesis; authoring of cultural resources project report, in prep. September 1999-January 2000.

Monitoring of Grading for the Herschel Place Project, La Jolla, California: Project archaeologist/monitor—included monitoring of grading activities associated with the development of a single-dwelling parcel. September 1999.

Survey and Testing of a Historic Resource for the Osterkamp Development Project, Valley Center, California: Project archaeologist/ director—included direction of field crews; development and completion of data recovery program; budget development; assessment of site for significance based on CEQA guidelines; management of artifact collections cataloging and curation; data synthesis; authoring of cultural resources project report. July-August 1999.

Survey and Testing of a Prehistoric Cultural Resource for the Proposed College Boulevard Alignment Project, Carlsbad, California: Project manager/director —included direction of field crews; development and completion of testing recovery program; assessment of site for significance based on CEQA guidelines; management of artifact collections cataloging and curation; data synthesis; authoring of cultural resources project report, in prep. July-August 1999.

Survey and Evaluation of Cultural Resources for the Palomar Christian Conference Center Project, Palomar Mountain, California: Project archaeologist—included direction of field crews; assessment of sites for significance based on CEQA guidelines; management of artifact collections cataloging and curation; data synthesis; authoring of cultural resources project report. July-August 1999.

Survey and Evaluation of Cultural Resources at the Village 2 High School Site, Otay Ranch, City of Chula Vista, California: Project manager/director —management of artifact collections cataloging and curation; assessment of site for significance based on CEQA guidelines; data synthesis; authoring of cultural resources project report. July 1999.

Cultural Resources Phase I, II, and III Investigations for the Immigration and Naturalization Services Triple Fence Project Along the International Border, San Diego County, California: Project manager/director for the survey, testing, and mitigation of sites along border—supervision of multiple field crews, NRHP eligibility assessments, Native American consultation, contribution to Environmental Assessment document, lithic and marine shell analysis, authoring of cultural resources project report. August 1997-January 2000.

Phase I, II, and III Investigations for the Scripps Poway Parkway East Project, Poway California: Project archaeologist/project director—included recordation and assessment of multicomponent prehistoric and historic sites; direction of Phase II and III investigations; direction of laboratory analyses including prehistoric and historic collections; curation of collections; data synthesis; coauthorship of final cultural resources report. February 1994; March-September 1994; September-December 1995.

Archaeological Evaluation of Cultural Resources Within the Proposed Corridor for the San Elijo Water Reclamation System Project, San Elijo, California: Project manager/director —test excavations; direction of artifact identification and analysis; graphics production; coauthorship of final cultural resources report. December 1994-July 1995.

Evaluation of Cultural Resources for the Environmental Impact Report for the Rose Canyon Trunk Sewer Project, San Diego, California: Project manager/Director —direction of test excavations; identification and analysis of prehistoric and historic artifact collections; data synthesis; co-authorship of final cultural resources report, San Diego, California. June 1991-March 1992.

Reports/Papers

Author, coauthor, or contributor to over 2,500 cultural resources management publications, a selection of which are presented below.

- 2015 An Archaeological/Historical Study for the Safari Highlands Ranch Project, City of Escondido, County of San Diego.
- 2015 A Phase I and II Cultural Resources Assessment for the Decker Parcels II Project, Planning Case No. 36962, Riverside County, California.
- 2015 A Phase I and II Cultural Resources Assessment for the Decker Parcels I Project, Planning Case No. 36950, Riverside County, California.
- 2015 Cultural Resource Data Recovery and Mitigation Monitoring Program for Site SDI-10,237 Locus F, Everly Subdivision Project, El Cajon, California.
- 2015 Phase I Cultural Resource Survey for the Woodward Street Senior Housing Project, City of San Marcos, California (APN 218-120-31).
- 2015 An Updated Cultural Resource Survey for the Box Springs Project (TR 33410), APNs 255-230-010, 255-240-005, 255-240-006, and Portions of 257-180-004, 257-180-005, and 257-180-006.
- 2015 A Phase I and II Cultural Resource Report for the Lake Ranch Project, TR 36730, Riverside County, California.
- 2015 A Phase II Cultural Resource Assessment for the Munro Valley Solar Project, Inyo County, California.
- 2014 Cultural Resources Monitoring Report for the Diamond Valley Solar Project, Community of Winchester, County of Riverside.
- 2014 National Historic Preservation Act Section 106 Compliance for the Proposed Saddleback Estates Project, Riverside County, California.
- 2014 A Phase II Cultural Resource Evaluation Report for RIV-8137 at the Toscana Project, TR 36593, Riverside County, California.
- 2014 Cultural Resources Study for the Estates at Del Mar Project, City of Del Mar, San Diego, California (TTM 14-001).
- 2014 Cultural Resources Study for the Aliso Canyon Major Subdivision Project, Rancho Santa Fe, San Diego County, California.
- 2014 Cultural Resources Due Diligence Assessment of the Ocean Colony Project, City of Encinitas.
- 2014 A Phase I and Phase II Cultural Resource Assessment for the Citrus Heights II Project, TTM 36475, Riverside County, California.
- 2013 A Phase I Cultural Resource Assessment for the Modular Logistics Center, Moreno Valley, Riverside County, California.

- 2013 A Phase I Cultural Resources Survey of the Ivey Ranch Project, Thousand Palms, Riverside County, California.
- 2013 Cultural Resources Report for the Emerald Acres Project, Riverside County, California.
- 2013 A Cultural Resources Records Search and Review for the Pala Del Norte Conservation Bank Project, San Diego County, California.
- 2013 An Updated Phase I Cultural Resources Assessment for Tentative Tract Maps 36484 and 36485, Audie Murphy Ranch, City of Menifee, County of Riverside.
- 2013 El Centro Town Center Industrial Development Project (EDA Grant No. 07-01-06386); Result of Cultural Resource Monitoring.
- 2013 Cultural Resources Survey Report for the Renda Residence Project, 9521 La Jolla Farms Road, La Jolla, California.
- 2013 A Phase I Cultural Resource Study for the Ballpark Village Project, San Diego, California.
- 2013 Archaeological Monitoring and Mitigation Program, San Clemente Senior Housing Project, 2350 South El Camino Real, City of San Clemente, Orange County, California (CUP No. 06-065; APN-060-032-04).
- 2012 Mitigation Monitoring Report for the Los Peñasquitos Recycled Water Pipeline.
- 2012 Cultural Resources Report for Menifee Heights (Tract 32277).
- 2012 A Phase I Cultural Resource Study for the Altman Residence at 9696 La Jolla Farms Road, La Jolla, California 92037.
- 2012 Mission Ranch Project (TM 5290-1/MUP P87-036W3): Results of Cultural Resources Monitoring During Mass Grading.
- 2012 A Phase I Cultural Resource Study for the Payan Property Project, San Diego, California.
- 2012 Phase I Archaeological Survey of the Rieger Residence, 13707 Durango Drive, Del Mar, California 92014, APN 300-369-49.
- 2011 Mission Ranch Project (TM 5290-1/MUP P87-036W3): Results of Cultural Resources Monitoring During Mass Grading.
- 2011 Mitigation Monitoring Report for the 1887 Viking Way Project, La Jolla, California.
- 2011 Cultural Resource Monitoring Report for the Sewer Group 714 Project.
- 2011 Results of Archaeological Monitoring at the 10th Avenue Parking Lot Project, City of San Diego, California (APNs 534-194-02 and 03).
- 2011 Archaeological Survey of the Pelberg Residence for a Bulletin 560 Permit Application; 8335 Camino Del Oro; La Jolla, California 92037 APN 346-162-01-00 .
- 2011 A Cultural Resources Survey Update and Evaluation for the Robertson Ranch West Project and an Evaluation of National Register Eligibility of Archaeological sites for Sites for Section 106 Review (NHPA).
- 2011 Mitigation Monitoring Report for the 43rd and Logan Project.

- 2011 Mitigation Monitoring Report for the Sewer Group 682 M Project, City of San Diego Project #174116.
- 2011 A Phase I Cultural Resource Study for the Nooren Residence Project, 8001 Calle de la Plata, La Jolla, California, Project No. 226965.
- 2011 A Phase I Cultural Resource Study for the Keating Residence Project, 9633 La Jolla Farms Road, La Jolla, California 92037.
- 2010 Mitigation Monitoring Report for the 15th & Island Project, City of San Diego; APNs 535-365-01, 535-365-02 and 535-392-05 through 535-392-07.
- 2010 Archaeological Resource Report Form: Mitigation Monitoring of the Sewer and Water Group 772 Project, San Diego, California, W.O. Nos. 187861 and 178351.
- 2010 Pottery Canyon Site Archaeological Evaluation Project, City of San Diego, California, Contract No. H105126.
- 2010 Archaeological Resource Report Form: Mitigation Monitoring of the Racetrack View Drive Project, San Diego, California; Project No. 163216.
- 2010 A Historical Evaluation of Structures on the Butterfield Trails Property.
- 2010 Historic Archaeological Significance Evaluation of 1761 Haydn Drive, Encinitas, California (APN 260-276-07-00).
- 2010 Results of Archaeological Monitoring of the Heller/Nguyen Project, TPM 06-01, Poway, California.
- 2010 Cultural Resource Survey and Evaluation Program for the Sunday Drive Parcel Project, San Diego County, California, APN 189-281-14.
- 2010 Archaeological Resource Report Form: Mitigation Monitoring of the Emergency Garnet Avenue Storm Drain Replacement Project, San Diego, California, Project No. B10062
- 2010 An Archaeological Study for the 1912 Spindrift Drive Project
- 2009 Cultural Resource Assessment of the North Ocean Beach Gateway Project City of San Diego #64A-003A; Project #154116.
- 2009 Archaeological Constraints Study of the Morgan Valley Wind Assessment Project, Lake County, California.
- 2008 Results of an Archaeological Review of the Helen Park Lane 3.1-acre Property (APN 314-561-31), Poway, California.
- 2008 Archaeological Letter Report for a Phase I Archaeological Assessment of the Valley Park Condominium Project, Ramona, California; APN 282-262-75-00.
- 2007 Archaeology at the Ballpark. Brian F. Smith and Associates, San Diego, California. Submitted to the Centre City Development Corporation.
- 2007 Result of an Archaeological Survey for the Villages at Promenade Project (APNs 115-180-007-3, 115-180-049-1, 115-180-042-4, 115-180-047-9) in the City of Corona, Riverside County.
- 2007 Monitoring Results for the Capping of Site CA-SDI-6038/SDM-W-5517 within the Katzer Jamul Center Project; P00-017.
- 2006 Archaeological Assessment for The Johnson Project (APN 322-011-10), Poway, California.

- 2005 Results of Archaeological Monitoring at the El Camino Del Teatro Accelerated Sewer Replacement Project (Bid No. K041364; WO # 177741; CIP # 46-610.6.
- 2005 Results of Archaeological Monitoring at the Baltazar Draper Avenue Project (Project No. 15857; APN: 351-040-09).
- 2004 TM 5325 ER #03-14-043 Cultural Resources.
- 2004 An Archaeological Survey and an Evaluation of Cultural Resources at the Salt Creek Project. Report on file at Brian F. Smith and Associates.
- 2003 An Archaeological Assessment for the Hidden Meadows Project, San Diego County, TM 5174, Log No. 99-08-033. Report on file at Brian F. Smith and Associates.
- 2003 An Archaeological Survey for the Manchester Estates Project, Coastal Development Permit #02-009, Encinitas, California. Report on file at Brian F. Smith and Associates.
- 2003 Archaeological Investigations at the Manchester Estates Project, Coastal Development Permit #02-009, Encinitas, California. Report on file at Brian F. Smith and Associates.
- 2003 Archaeological Monitoring of Geological Testing Cores at the Pacific Beach Christian Church Project. Report on file at Brian F. Smith and Associates.
- 2003 San Juan Creek Drilling Archaeological Monitoring. Report on file at Brian F. Smith and Associates.
- 2003 Evaluation of Archaeological Resources Within the Spring Canyon Biological Mitigation Area, Otay Mesa, San Diego County, California. Brian F. Smith and Associates, San Diego, California.
- 2002 An Archaeological/Historical Study for the Otay Ranch Village 13 Project (et al.). Brian F. Smith and Associates, San Diego, California.
- 2002 An Archaeological/Historical Study for the Audie Murphy Ranch Project (et al.). Brian F. Smith and Associates, San Diego, California.
- 2002 Results of an Archaeological Survey for the Remote Video Surveillance Project, El Centro Sector, Imperial County, California. Brian F. Smith and Associates, San Diego, California.
- 2002 A Cultural Resources Survey and Evaluation for the Proposed Robertson Ranch Project, City of Carlsbad. Brian F. Smith and Associates, San Diego, California.
- 2002 Archaeological Mitigation of Impacts to Prehistoric Site SDI-7976 for the Eastlake III Woods Project, Chula Vista, California. Brian F. Smith and Associates, San Diego, California.
- 2002 An Archaeological/Historical Study for Tract No. 29777, Menifee West GPA Project, Perris Valley, Riverside County. Brian F. Smith and Associates, San Diego, California.
- 2002 An Archaeological/Historical Study for Tract No. 29835, Menifee West GPA Project, Perris Valley, Riverside County. Brian F. Smith and Associates, San Diego, California.
- 2001 An Archaeological Survey and Evaluation of a Cultural Resource for the Moore Property, Poway. Brian F. Smith and Associates, San Diego, California.
- 2001 An Archaeological Report for the Mitigation, Monitoring, and Reporting Program at the Water and Sewer Group Job 530A, Old Town San Diego. Brian F. Smith and Associates, San Diego, California.

- 2001 A Cultural Resources Impact Survey for the High Desert Water District Recharge Site 6 Project, Yucca Valley. Brian F. Smith and Associates, San Diego, California.
- 2001 Archaeological Mitigation of Impacts to Prehistoric Site SDI-13,864 at the Otay Ranch SPA-One West Project. Brian F. Smith and Associates, San Diego, California.
- 2001 A Cultural Resources Survey and Site Evaluations at the Stewart Subdivision Project, Moreno Valley, County of San Diego. Brian F. Smith and Associates, San Diego, California.
- 2000 An Archaeological/Historical Study for the French Valley Specific Plan/EIR, French Valley, County of Riverside. Brian F. Smith and Associates, San Diego, California.
- 2000 Results of an Archaeological Survey and the Evaluation of Cultural Resources at The TPM#24003–Lawson Valley Project. Brian F. Smith and Associates, San Diego, California.
- 2000 Archaeological Mitigation of Impacts to Prehistoric Site SDI-5326 at the Westview High School Project for the Poway Unified School District. Brian F. Smith and Associates, San Diego, California.
- 2000 An Archaeological/Historical Study for the Meniffee Ranch Project. Brian F. Smith and Associates, San Diego, California.
- 2000 An Archaeological Survey and Evaluation of Cultural Resources for the Bernardo Mountain Project, Escondido, California. Brian F. Smith and Associates, San Diego, California.
- 2000 A Cultural Resources Impact Survey for the Nextel Black Mountain Road Project, San Diego, California. Brian F. Smith and Associates, San Diego, California.
- 2000 A Cultural Resources Impact Survey for the Rancho Vista Project, 740 Hilltop Drive, Chula Vista, California. Brian F. Smith and Associates, San Diego, California.
- 2000 A Cultural Resources Impact Survey for the Poway Creek Project, Poway, California. Brian F. Smith and Associates, San Diego, California.
- 2000 Cultural Resource Survey and Geotechnical Monitoring for the Mohyi Residence Project. Brian F. Smith and Associates, San Diego, California.
- 2000 Enhanced Cultural Resource Survey and Evaluation for the Prewitt/Schmucker/ Cavadias Project. Brian F. Smith and Associates, San Diego, California.
- 2000 Enhanced Cultural Resource Survey and Evaluation for the Lamont 5 Project. Brian F. Smith and Associates, San Diego, California.
- 2000 Salvage Excavations at Site SDM-W-95 (CA-SDI-211) for the Poinsettia Shores Santalina Development Project, Carlsbad, California. Brian F. Smith and Associates, San Diego, California.
- 2000 Enhanced Cultural Resource Survey and Evaluation for the Reiss Residence Project, La Jolla, California. Brian F. Smith and Associates, San Diego, California.
- 2000 Enhanced Cultural Resource Survey and Evaluation for the Tyrian 3 Project, La Jolla, California. Brian F. Smith and Associates, San Diego, California.
- 2000 A Report for an Archaeological Evaluation of Cultural Resources at the Otay Ranch Village Two SPA, Chula Vista, California. Brian F. Smith and Associates, San Diego, California.
- 2000 An Archaeological Evaluation of Cultural Resources for the Airway Truck Parking Project, Otay Mesa, County of San Diego. Brian F. Smith and Associates, San Diego, California.

- 2000 Results of an Archaeological Survey and Evaluation of a Resource for the Tin Can Hill Segment of the Immigration and Naturalization and Immigration Service Border Road, Fence, and Lighting Project, San Diego County, California. Brian F. Smith and Associates, San Diego, California.
- 1999 An Archaeological Survey of the Home Creek Village Project, 4600 Block of Home Avenue, San Diego, California. Brian F. Smith and Associates, San Diego, California.
- 1999 An Archaeological Survey for the Sgobassi Lot Split, San Diego County, California. Brian F. Smith and Associates, San Diego, California.
- 1999 An Evaluation of Cultural Resources at the Otay Ranch Village 11 Project. Brian F. Smith and Associates, San Diego, California.
- 1999 An Archaeological/Historical Survey and Evaluation of a Cultural Resource for The Osterkamp Development Project, Valley Center, California. Brian F. Smith and Associates, San Diego, California.
- 1999 An Archaeological Survey and Evaluation of Cultural Resources for the Palomar Christian Conference Center Project, Palomar Mountain, California. Brian F. Smith and Associates, San Diego, California.
- 1999 An Archaeological Survey and Evaluation of a Cultural Resource for the Proposed College Boulevard Alignment Project. Brian F. Smith and Associates, San Diego, California.
- 1999 Results of an Archaeological Evaluation for the Anthony's Pizza Acquisition Project in Ocean Beach, City of San Diego (with L. Pierson and B. Smith). Brian F. Smith and Associates, San Diego, California.
- 1996 An Archaeological Testing Program for the Scripps Poway Parkway East Project. Brian F. Smith and Associates, San Diego, California.
- 1995 Results of a Cultural Resources Study for the 4S Ranch. Brian F. Smith and Associates, San Diego, California.
- 1995 Results of an Archaeological Evaluation of Cultural Resources Within the Proposed Corridor for the San Elijo Water Reclamation System. Brian F. Smith and Associates, San Diego, California.
- 1994 Results of the Cultural Resources Mitigation Programs at Sites SDI-11,044/H and SDI-12,038 at the Salt Creek Ranch Project. Brian F. Smith and Associates, San Diego, California.
- 1993 Results of an Archaeological Survey and Evaluation of Cultural Resources at the Stallion Oaks Ranch Project. Brian F. Smith and Associates, San Diego, California.
- 1992 Results of an Archaeological Survey and the Evaluation of Cultural Resources at the Ely Lot Split Project. Brian F. Smith and Associates, San Diego, California.
- 1991 The Results of an Archaeological Study for the Walton Development Group Project. Brian F. Smith and Associates, San Diego, California.

APPENDIX B

Archaeological Records Search Results

(Deleted for Public Review; Bound Separately)

APPENDIX C

NAHC Sacred Lands File Search Results

(Deleted for Public Review; Bound Separately)

