

For further information on an agenda item, please contact the City at 12363 Limonite Ave. Suite 910,  
Eastvale, CA 91752

**AGENDA**  
**MEETING OF THE CITY OF EASTVALE AND JURUPA COMMUNITY SERVICES**  
**LIAISON COMMITTEE**  
**Tuesday, March 20, 2012**  
**6:00 P.M.**  
**Rosa Parks Elementary School 13830 Whispering Hills Drive**

1. **CALL TO ORDER:** 6:00 p.m.
2. **ROLL CALL/PLEDGE OF ALLEGIANCE:**
3. **ADDITIONS/DELETIONS TO THE AGENDA:**
4. **PUBLIC COMMENT/CITIZEN PARTICIPATION:**

*This is the time when any member of the public may bring a matter to the attention of the Committee that is within the jurisdictions of the Committee. The Ralph M. Brown act limits the Committee's and staff's ability to respond to comments on non-agendized matters at the time such comments are made. Thus, your comments may be agendized for a future meeting or referred to staff. The Committee may discuss or ask questions for clarification, if desired, at this time. **Public comment is limited to two (2) minutes each with a maximum of six (6) minutes.***

5. **CONSENT CALENDAR:**

*Consent Calendar items are normally enacted in one motion. Committee members may remove a Consent Calendar item for separate action. **Public comment is limited to two (2) minutes each with a maximum of (6) minutes.***

5.1 Approval of Minutes from January 24, 2012 Meeting.

6. **DISCUSSION ITEMS:**

6.1 JCSD Parks Master Plan/Eastvale General Plan.

7. **ADJOURNMENT:**

*In compliance with the Americans with Disabilities Act, if you need special assistance to participate in this meeting, please contact the City of Eastvale. Notification 48 hours prior to the meeting will enable the City to make reasonable arrangements to ensure accessibility to this meeting.*

**POSTING STATEMENT:**

*I, Ariel Berry, Deputy City Clerk or my designee hereby certify that a true and correct, accurate copy of the foregoing agenda was posted on March 16, 2012, seventy-two (72) hours prior to the meeting per Government Code 54954.2.*

12363 Limonite Ave. Suite 910, Eastvale, CA 91752  
Rosa Parks Elementary School 13830 Whispering Hills Drive  
Eastvale Library, Roosevelt High School, 7447 Cleveland Ave.  
City of Eastvale Website, [www.ci.eastvale.ca.us](http://www.ci.eastvale.ca.us)

**JURUPA COMMUNITY SERVICES DISTRICT (JCSD)/  
CITY OF EASTVALE  
LIAISON COMMITTEE MINUTES**

January 24, 2012

The JCSD/City of Eastvale Liaison Committee Meeting was held at 11201 Harrel Street, Mira Loma, CA, on January 24, 2012, at 6:35 p.m.

**JCSD Representatives:**

Kathryn Bogart, Vice President  
Jane F. Anderson, Director  
Dani Cullens, Parks Services Supervisor  
Burt Ferguson, Recreation Supervisor  
Vanessa Hampton, Administrative Secretary II

**City of Eastvale Representatives:**

Ike Bootsma, City Council Member  
Kelly Howell, City Council Member  
Bob Van Nort, Interim City Manager  
Michelle Nissen, Public Information Officer  
Eric Norris, Planning Director

**Visitors:**

John Crawford, Principal Engineer/Deputy City Engineer, Eastvale Public Works Department  
Lt. Jason Horton, Riverside Sheriff's Office/Deputy Chief, Eastvale Police Department  
Deputy Aaron Avila, Riverside Sheriff's Office/JCSD Parks Deputy  
Matthew Conoscente, CalFire/Eastvale Fire Department  
Lupe J. Gallardo, CalFire/Eastvale Fire Department  
Dickie Simmons, Eastvale Chamber of Commerce  
Art Organista, Law Enforcement and Fire Fighters (LEAFF)  
Irene Long, Jurupa Citizen Corps  
Jeff Williams, Eleanor Roosevelt High School (ERHS) Climate Boosters and Eastvale Community Foundation (ECF)  
Travis Hart, Empire Soccer  
Mike Nava, Eastvale Girls Softball Association (EGSA)  
Monique Whritenour, VantagePoint Church  
Helen Jeong, Sunrise Grace Church  
Bill Newberry

There were no public comments.

Moved by Director J. Anderson, seconded by Council Member Howell, and carried by a unanimous vote, to approve the Minutes of the December 5, 2011, JCSD/City of Eastvale Liaison Committee Meeting.

Agenda Items

**1. City of Eastvale Temporary Event Permit Planning.**

- City of Eastvale's permit fees for this year to be waived for organizations in attendance at this meeting that place their event(s) on the master calendar.
- On Friday, the Temporary Event Permit application should be available for download on the City's website.

**2. Annual Eastvale Events Planning.**

- Next Liaison Committee meeting to be held March 20<sup>th</sup> to discuss City of Eastvale General Plan and JCSD Parks Master Plan.
- Events (dates subject to change):

ORGANIZATION	DATE	EVENT
<b>VantagePoint Church</b>	3/31	Easter
	10/31	Trunk or Treat
	12/1	Light the Night
<b>EGSA</b>	3/2	Opening Night (4:00 p.m. – 9:30 p.m.)
	2/4	Pitching and Hitting Clinic
	Not Stated	Quakes Night (would be nice to do it on 6/23 with Eastvale Community Foundation)
<b>Eastvale Little League</b> (reported by Mike Nava, EGSA)	2/3	Opening Day
<b>JCSD</b>	5/19	Tentative Event at Bootsma Residence
	10/6	Fall Festival
	6/29 - 8/31	Concert in the Park Series (Fridays, 7:00 p.m. – 8:30 p.m.)
	6/28 - 7/1	Picnic in the Park

ORGANIZATION	DATE	EVENT
JCSD (continued)	12/8	Holiday Showcase (10:00 a.m. – 3:00 p.m.) Pancake Breakfast at 8:00 a.m.
	TBD	Family Camp Out
ERHS Climate Boosters	6/28 – 7/1	Picnic in the Park/Carnival (Thursday (VIP night), 5:00 p.m. – 10:00 p.m.; Friday – Sunday, 12:00 p.m. – 10:00 p.m.)
	April TBD	Volunteer Awards Night at ERHS
	10/6	5K/10K Eastvale Fun Run
ECF	6/23	Quakes Night (at Quakes Stadium in Rancho Cucamonga)
	1/28	Baseball Clinic with Eastvale Little League at ERHS
Other events/dates TBD		
Sunrise Grace Church	4/7	Easter Egg Hunt 10:00 a.m. – 2:00 p.m. (at Clara Barton Elementary School)
Empire Soccer	8/24	Opening Night (5:00 p.m. – 10:00 p.m.)
Eleanor Roosevelt High School	5/31	Graduation (7:00 p.m.)

**3. Open Committee Member Discussion of Non-Action Items.** There were no items discussed.

**B. Adjournment:** There being no further business to come before the Committee Members, the meeting was adjourned at 8:00 p.m.

\_\_\_\_\_  
 JCSD Committee Member

\_\_\_\_\_  
 JCSD Secretary of the Board of Directors



**Jurupa Community Services District  
 JCSD Parks and Recreation Master Plan  
 DRAFT PROJECT SCHEDULE  
 Updated: February 7, 2012**

***Bold/Italic*** indicates completed task  
***Highlighted*** indicates Meeting  
***Highlighted*** indicates District provided

**TARGET DATE**

<b><u>PHASE I: REVIEW EXISTING DOCUMENTATION AND DISTRICT WIDE INVENTORY ASSESSMENT</u></b>	Oct./Nov./Dec.
<b><i>Task 1 Kick-Off Meeting with Team</i></b>	<b><i>October 24, 2011</i></b>
<b><i>Task 2 Review Pertinent Related Studies</i></b>	
<b><i>Task 3 Parks, Recreation Facilities, and Trails Inventory Site Facilities Tour</i></b>	<b><i>November 15, 2011</i></b>
<b><i>Task 4 Inventory of Recreation Programs</i></b>	
<b>Task 5 Trends Analysis</b>	In Progress (02/15/12)
<b><i>Task 6 Inventory of Operations and Maintenance Standards Site Facilities Tour- Tim Gallagher</i></b>	<b><i>November 15, 2011</i></b>
<b><u>PHASE II: COMMUNITY OUTREACH</u></b>	Dec./Jan./Feb.
<b><i>Task 1 Stakeholder Interviews (8) Total</i></b>	<b><i>Dec. 5 &amp; 6, 2011</i></b>
<b><i>Task 2 Statistically Valid Resident Telephone Survey Review Meeting with Staff</i></b>	<b><i>January, 2012 January 18, 2012</i></b>
<b>Task 3 Sports Organization Survey - <b><i>Data Received from District</i></b></b>	
<b><i>Task 4 Update meeting with District Manager</i></b>	<b><i>February 7<sup>th</sup></i></b>
Public Workshops	
- <b><i>Workshop #1 (Characteristics and Issues)</i></b>	<b><i>February 7<sup>th</sup> (Tues)</i></b>
-Workshop #2 (Sports Groups)	February 18 <sup>th</sup> (Sat)
-Workshop #3 (Prioritization)	February 29 <sup>th</sup> (Wed)
<b><u>PHASE III: NEEDS ASSESSMENT</u></b>	Feb. /March
<b><i>Task 1 Socio-Demographic Analysis and Projections</i></b>	
<b>Task 2 Development of Facility Standards</b>	In Progress
<b>Task 3 Needs Analysis</b>	In Progress
<b><i>Task 4 Operations and Maintenance Evaluation and Recommendations</i></b>	<b><i>January 17, 2012</i></b>
<b>Task 5 Program Evaluation and Recommendations</b>	In Progress
<b><u>PHASE IV: MASTER PLAN DOCUMENT</u></b>	March/April
<b>Task 1 Recommendations</b>	
<b>Task 2 Cost Estimates</b>	
<b>Task 3 Funding</b>	
<b>Task 4 Draft master Plan Document Review meeting with Staff</b>	
<b>Task 5 Final Master Plan Report Presentation to Board</b>	

31591 Camino Capistrano  
San Juan Capistrano, CA 92675  
www.RJMdesigngroup.com  
[949] 493-2690  
[949] 493-2600

Community Inspired Spaces



## **JURUPA COMMUNITY SERVICES DISTRICT JCSD PARKS AND RECREATION MASTER PLAN**

### **PROJECT SUMMARY AND STATUS UPDATE MEETING AGENDA**

**February 7, 2012  
1:00 PM**

#### **I. PROJECT SCHEDULE**

A. Schedule Update

#### **II. PROJECT REVIEW**

- A. Demographic Data Summary Notes
- B. Review Phone Survey Summary Notes
- C. Review Stakeholder Interview Summary Notes
- D. Review Program Inventory – Summary Notes
- E. Facilities Inventory Mapping / Matrix / Cut Sheets Update
- F. Park Categories – Matrix Update
- G. Review Maintenance & Operations Summary Notes
- H. Community Workshop #1 – Agenda / PowerPoint

PARK CLASSIFICATION DESIGNATION CRITERIA

PARK CATEGORY NAME	SIZE					SERVICE RADIUS					TYPICAL FACILITIES				
	County	City A	City B	City C	JCSD MP	County	City A	City B	City C	JCSD MP	County	City A	City B	City C	JCSD MP
REGIONAL PARKS	150-500 acres		+/- 50 ac	> 40 ac				serve those within and out of city			Focusing on activities and natural features; often based on a specific scenic or recreation opp.		May provide: significant natural feat. passive/active recreation ex: sports fields; picnicking; fishing; hiking; camping		
CITY WIDE PARKS		> 50 ac					serve larger comm. pops.								
COMMUNITY PARKS	larger than neighborhood, smaller than regional (beyond a .5 mi service radius/ less than 150 acres)	> 15ac < 50 ac	> 15ac < 30 ac	10-40 ac	about 50 ac		1-2 mi		2 mi	Many neighborhoods (40,000-80,000 people)	provide recreation opportunities beyond neighborhood parks		typical: swimming pools; lighted sports fields; picnic facilities; hiking; play areas; restrooms; off-street parking; service yards	primary purpose: active rec.; may provide passive rec.; recreation centers: gymnasiums, multi-purpose rooms, classrooms, offices; sports fields; amphitheaters; group picnic; parking	Includes facilities such as: gymnasiums; community centers; lighted sports fields and courts; restrooms; group picnic areas;
NEIGHBORHOOD PARKS		> 5ac < 15 ac		5-10 ac	8-15 ac	5 mi	.5 mi	.5 mi	.5 mi	.5 mi		might include: playgrounds; multi-purpose turf areas; practice sports fields; picnic tables; picnic shelters; walking paths; rac. feat. (basketball)	might include: playgrounds; multi-purpose turf areas; limited sports fields; picnic tables; walking paths; small parking areas; rac. feat. (basketball)	might include: playgrounds; multi-purpose turf areas; sports fields; picnic tables; picnic shelters; walking paths; small parking areas; rac. feat. (basketball)	tennis courts; tot lots; baseball/ softball fields; football/soccer fields; basketball courts; parking; picnic areas; walking paths/trails
NEIGHBORHOOD PLAY AREA		< 5 ac										might include: playgrounds; vista points; multi-purpose turf areas; practice sports fields; picnic tables; picnic shelters; walking paths; rac. feat. (basketball)			
MINIPARK	= 1 ac or less	< 5 ac						.25 mi - .5 mi					typical: court games; playgrounds; picnic areas; passive green space; off-street parking		
SPECIAL USE FACILITIES							city-wide					character/single function ex: equestrian facility; Frisbee golf; mini courses; museum; vista point; comm. buildings (w/o park)	generally, unique character/single function ex: equestrian facility; trail staging; comm. buildings (w/o park)	generally, unique character/single function ex: vista points; greenbenches; rest areas; community buildings (w/o park)	
SPORTS PARK										larger than Estevale, or even Jurupa/ Norco					numerous ball fields and concessions, which are turned out to teams and leagues.
NATURE PARKS															
NATURAL OPEN SPACE PARKS															mostly undeveloped; < 10% gross area developed, not including trails
PARTNERSHIP SITES/FACILITIES													Shared Use: city and private or non-profit org.		
SHARED SCHOOL/PARK COMMUNITY RECREATION FACILITIES															Potentially playing fields; sports facilities including: swimming pool, lighted sports fields, tennis courts, gymnasium ["Kids Zone"]





**SUMMARY NOTES OF  
RECREATION PROGRAMS AND SERVICES**

**February 6, 2012**

---

**Inventory: Recreation Programs:**

- 93 Programs
- 61 New Programs added in 2011

<b>Program Category</b>	<b>Enrollment</b>
- Tiny Tots	799
- Youth	1,051
- Teens	51
- Family	563
- Adults	62
<b>Total</b>	<b>2,526</b>

**Partnerships:**

- City of Eastvale
- Conona / Norco School District
- Eastvale Little League
- Eastvale Girls' Softball
- Eastvale Mustangs Youth Football and Cheer
- Empire Soccer Club
- Eastvale Basketball

**JURUPA COMMUNITY SERVICES DISTRICT  
JCSD PARKS AND RECREATION MASTER PLAN**

# SUMMARY NOTES OF POPULATION AND DEMOGRAPHICS SUMMARY

February 6, 2012

---

- Based on:
  - 2010 Census Data - Riverside County Transportation Land Management Agency
  - U.S. Census Bureau - 2008 - 2010 American Community Survey
- Low population base in 2000
- Explosive growth since 2000 – almost 1,950 percent
- The District has significantly larger households (4.02) in 2010 than the County as a whole (3.14)
- Significantly above average proportion of population under 18 years of age
  - District's percentage of population under 18 years of age (19.5) percent much higher than Riverside County (15.0)
  - Percentage of households with children under the age of 18 years in the District (64.3) percent, is significantly larger than Riverside County (42.9) percent.
- Very low proportion of population over 65 years of age
  - Population represented by persons 65 and over in the District in 2010 (4.6) percent much lower than Riverside County (11.8) percent
- The median age in the District increased to an estimated 30.4 years to 2010 from 26.8 years in 2000. The County median age is 33.7 in 2010.
- Median household incomes in the District (\$104,758) are close to double the median figures for Riverside County in 2010 (\$56,156).
- The District is ethnically diverse
  - Percentage of white population in District (23.2 percent) is much lower than that found in the County (61.0 percent)
  - Fastest growing ethnic population is Asian from 2.4 percent in 2000 to 26.1 percent in 2010
- Home ownership rate in the District is above average and home values, rents, and income levels are all far above average.
  - Median housing value of \$417,300 in District in 2010 is fifty percent higher than the median value of \$266,800 in the County
- Demographic characteristics define a demand profile which indicates a young, active community with a high level of demand for many of the types of recreation facilities in District.

## SUMMARY

- The District has experienced an extremely high rate of growth in the past ten years.
- Expected to grow another 25 percent over the next 25 years
- Anticipate a slowly increasing ethnic diversity
- Household sizes are expected to remain high
- It is not expected that the extremely high proportion of children under 18 years of age will continue to increase, it could decrease somewhat

**SUMMARY NOTES FOR  
ASSESSMENT OF CURRENT MAINTENANCE CONDITIONS  
AND RECOMMENDATIONS FOR EXISTING PARK AND  
RECREATION FACILITIES  
February 6, 2012**

---

**Executive Summary**

- Overall Parks are well maintained, visually attractive and safe with little to no deferred maintenance.
- Current resources may prove to be inadequate to fully fund both operation / maintenance and long-term capital upgrades and development.
- Invest in new maintenance technology and practices
  - Central irrigation control
  - Sustainable practices
  - Development of maintenance manual
- District has excellent park maintenance standards for contracted park maintenance.
- Work towards implementing:
  - Centrally controlled irrigation system
  - Maintenance Manual
    - Maintenance objectives and frequency of care
    - Formalized scheduled park facility inspections
    - Design standards
    - Preventative maintenance plan
    - Performance standards
  - Soil management plan
  - Establish lifecycle maintenance plan
  - Develop a volunteer park adoption / maintenance program
  - Develop a sustainable performance system
- Short-term and Long-term Recommendations (last two pages on report)

**Introduction:**

Objective of the park site assessment and maintenance to evaluate, assess and make recommendations on the maintenance operations.

**Current Conditions and Recommendations**

- |                                 |  |
|---------------------------------|--|
| ▪ Park Grounds                  | ▪ Playgrounds                          |
| ▪ Sports Fields                 | ▪ Park Trees and Landscaping           |
| ▪ Park Roads and Parking Areas  | ▪ Specialized Facilities / Skate Parks |
| ▪ Park Sidewalks and Walkways   | ▪ Fencing                              |
| ▪ Trails                        | ▪ Irrigations Systems                  |
| ▪ Ball Courts                   | ▪ Public Art                           |
| ▪ Park Structures and Buildings | ▪ Sustainable Practices                |

**SUMMARY NOTES OF  
DRAFT STAKEHOLDER INTERVIEW SUMMARY**

**February 6, 2012**

---

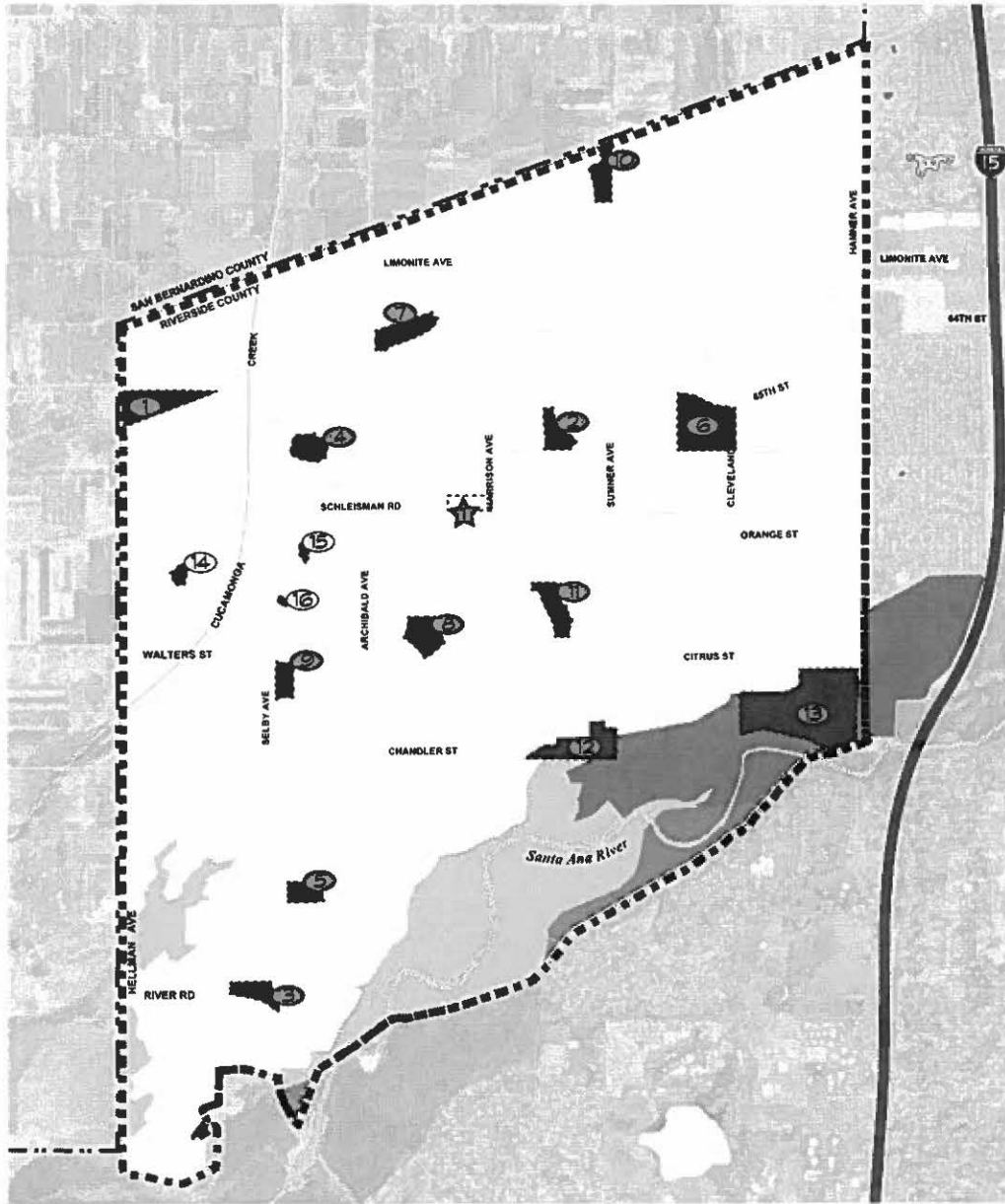
- 12 Interviews conducted December 5 and 6, 2011.
- Cordial and Candid
- Summary representative of comments received not consensus
- Pleased with the District's progress in adding more programs
- Proud of the parks and facilities they have
- Thought the staff was doing a good job
- The District has good leadership
- Some concern about program fees and annual assessments
- Trails and aquatic center were the facilities desired
- More programs for adults / seniors
- Hot Button: Future organization structure with the City of Eastvale, City assuming Park and Rec Services
- Societal Trends and Implications should be available by the end of the week

**JURUPA COMMUNITY SERVICES DISTRICT  
JCSD PARKS AND RECREATION MASTER PLAN**

**JCSD  
PARK AND  
RECREATION  
FACILITIES**

**Field Notes**

<b>KEY RECREATION FACILITIES</b>		
<b>PARKS</b>		
1	American Heroes Park	Edison Easement; no metal objects within easement; concessions underutilized, no sports at park currently; large expansive turf areas
2	Cedar Creek Park	Temp fire building at park; no can for hot coals - verify; 2 benches have shade own shade struct. No shower in restroom (for splash play); My count shows 4 additional tables vs aerial and jcsc info - verify
3	Dairyland Park	3 benches w/ shade struct.
4	Deer Creek Park	
5	Half Moon Park	Restroom has maint. Baseball unlighted. School adjacent.
6	Harada Heritage Park	Under renovation. Did not see south side of park. Roller Hockey removed; basketball courts removed; Two sports fields double as det basins; Large concessions building w/freezer/fridge/sink - just warming - bring in grills- with equip room; verify field uses; garbage can count seems low; 2 drinking ftns are also for dogs; multi-use field hosts football and cricket; building third baseball field; cell tower; building neighborhood center with programs and classes; grill count differs from JCSD; batting cages?
7	James C. Huber Park	playfiends serve as a detention basin (rarely if ever floods); Concessions - pre-packaged goods w/ maint room.
8	McCune Family Park	Verify Soccer usage. I marked down volleyball, don't think it is really there - verify
8	Mountain View Park	Restroom has maint. Community Room for classes. Swale runs through middle of park.
10	Orchard Park	Volleyball is sand; soccer field overlay; 2 lighted softball with bleachers and soccer overlay; concessions are heating only; two 1/2 court basketball courts; Immediately adjacent to houses
11	Providence Ranch Park	
12	Riverwalk Park	Exercise Course, Frisbee Golf; table/bench numbers might be inaccurate; boundary uncertain. Decorative cobble swale directs street runoff directly into creek w/o treatment. Restroom trailer unit only - verify. Per JCDS website: Park has 13 acres of usable parkland. Undeveloped is total -13?? I think their number is off
<b>Jogging/Running/Bike Trail</b>		
1	Eastvale Trail	
<b>Community Centers</b>		
1	Eastvale Community Center (Under Construction)	



**Existing JCSD Parks**

- 1 American Heroes Park
- 2 Cedar Creek Park
- 3 Dairland Park
- 4 Deer Creek Park
- 5 Half Moon Park
- 6 Harada Heritage Park
- 7 James C. Huber Park
- 8 McCune Family Park
- 9 Mountain View Park
- 10 Orchard Park
- 11 Providence Ranch Park
- 12 Riverwalk Park

**Planned JCSD Parks**

- 13 Eastvale Community Park

**Private Parks**

- 14 Avonlea Park
- 15 Private Park 2
- 16 Private Park 3

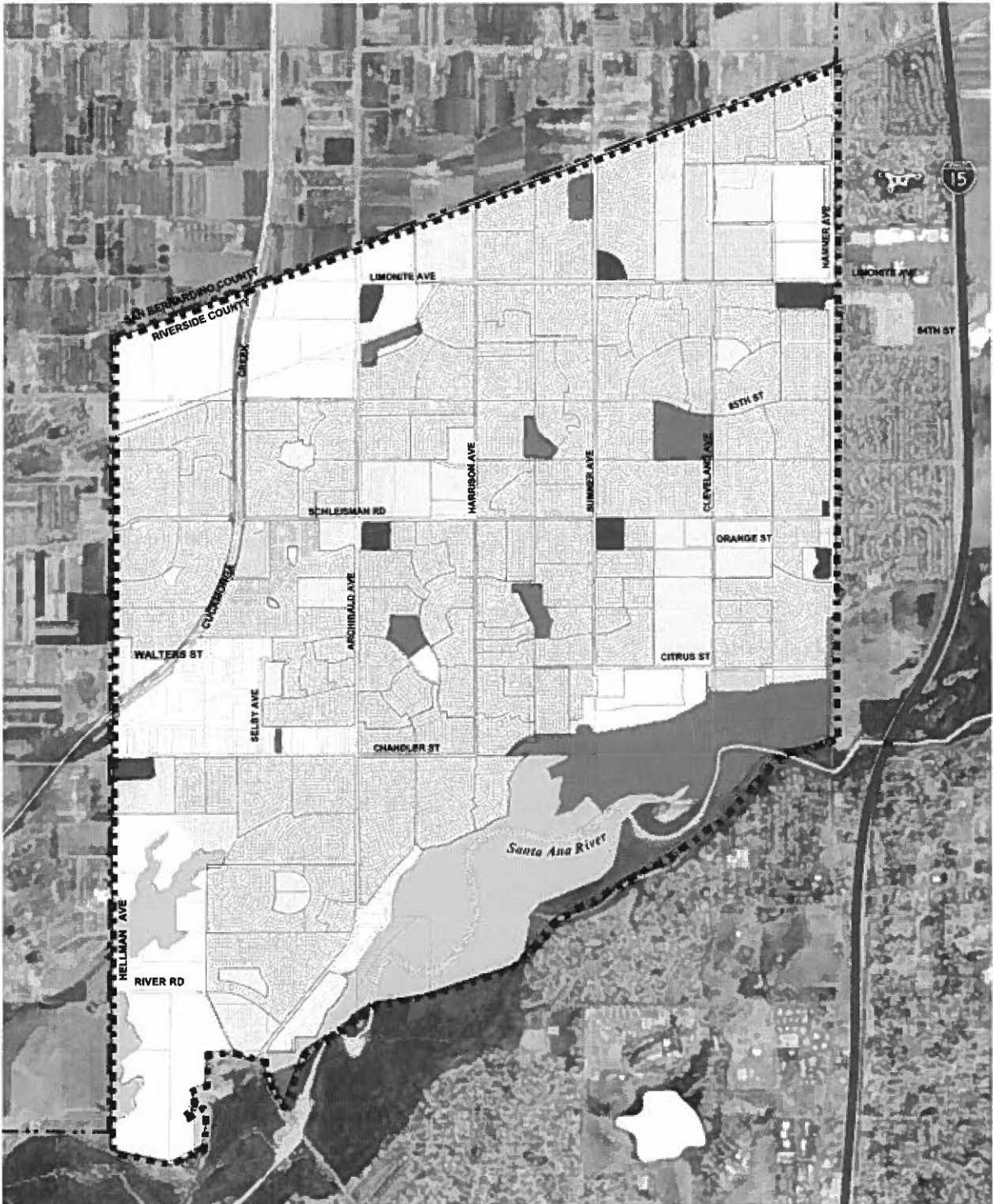
- ★ **Community Center**  
Eastvale Community Center

**Land Use**

- Agriculture
- Conservation
- Open Space - Recreation
- Open Space - Water
- Schools (Public Facility Land Use)

Land Use Data:  
County of Riverside, Transportation and Land Management Agency,  
County Wide GIS Data - 12/2011  
(Amended to reflect known changes in land use data)





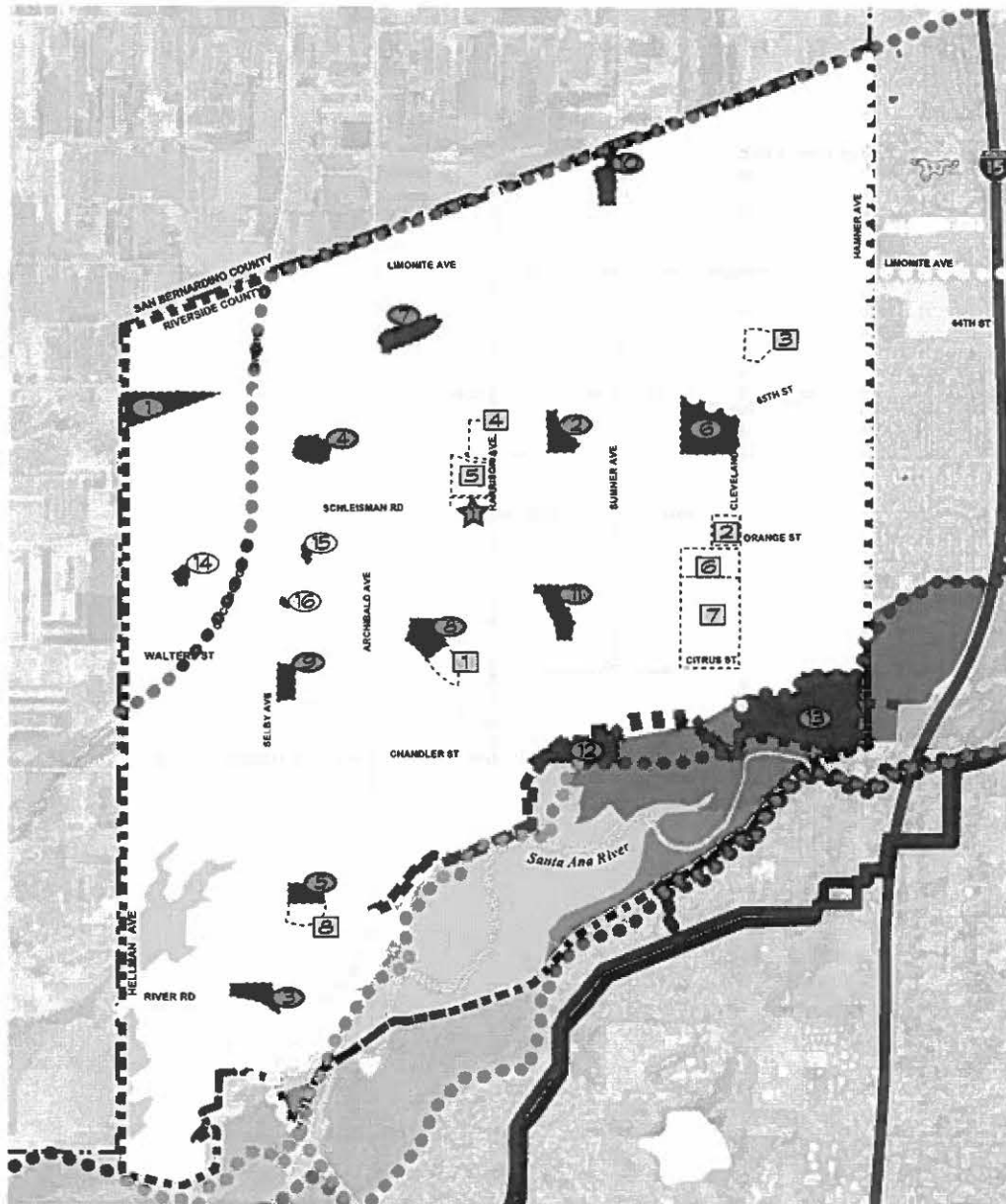
LAND USE			
	Low Density Residential (One-half acre minimum lot size)		Agriculture
	Medium Density Residential (2 - 5 D.U./acre)		Conservation
	Medium High Density Residential (5 - 8 D.U./acre)		Conservation - Habitat
	High Density Residential (8 - 14 D.U./acre)		Open Space - Recreation
	Light Industrial		
	Commercial Retail		
	Business Park		
	Public Facilities		



PARK CLASSIFICATION DESIGNATION CRITERIA

PARK CATEGORY NAME	SIZE					SERVICE RADIUS					TYPICAL FACILITIES				
	County	City A	City B	City C	JCSD MP	County	City A	City B	City C	JCSD MP	County	City A	City B	City C	JCSD MP
COMMUNITY PARKS	larger than neighborhood, smaller than regional (beyond a .5 mi service radius/ less than 150 acres)	> 15ac < 50 ac	> 15ac < 30 ac	10-40 ac	about 50 ac		1-2 mi		2 mi	Many neighborhoods (40,000-60,000 people)	provide recreation opportunities beyond neighborhood parks		typical: swimming pools; lighted sports fields; picnic facilities; hiking; play areas; restrooms; off-street parking; service yards	primary purpose: active rec., may provide passive rec.; recreation centers: gymnasiums, multi-purpose rooms, classrooms, offices; sports fields; amphitheatres; group picnic; parking	includes facilities such as: gymnasiums; community centers; lighted sports fields and courts; restrooms; group picnic areas;
NEIGHBORHOOD PARKS		> 5ac < 15 ac		5-10 ac	8-15 ac	.5 mi	.5 mi	.5 mi	.5 mi	.5 mi		might include: playgrounds; multi-purpose turf areas; practice sports fields; picnic tables; picnic shelters; walking paths; rec feat. (basketball)	might include: playgrounds; multi-purpose turf areas; picnic tables; picnic shelters; walking paths; small parking areas; rec feat (basketball)	might include: playgrounds; multi-purpose turf areas; limited sports fields; picnic tables; picnic shelters; walking paths; small parking areas; rec. feat (basketball)	tennis courts; tot lots; baseball/ softball fields; football/soccer fields; basketball courts; parking; picnic areas; walking paths/trails
SPECIAL USE FACILITIES								city-wide				generally: unique character/single function ex: equestrian facility; Frisbee golf; BMX course; museum; vista point; comm. Buildings (w/o park)	generally: unique character/single function ex: equestrian facility; trail staging; comm. Buildings (w/o park)	generally: unique character/single function ex: vista points; greenbelts; rest areas; community buildings (w/o park)	
SPORTS PARK										larger than Eastvale, or even Jurupa/Norco					numerous ball fields and concessions, which are rented out to teams and leagues.
NATURE PARKS												most of park is undeveloped			
NATURAL OPEN SPACE PARKS													mostly undeveloped; < 10% gross area developed, not including trails		
PARTNERSHIP SITES/FACILITIES													Shared Use: city and private or non-profit org.		
SHARED SCHOOL/PARK COMMUNITY RECREATION FACILITIES															Potentially: playing fields; sports facilities including: swimming pool, lighted sports fields, tennis courts, gymnasium ["Kids Zone"]





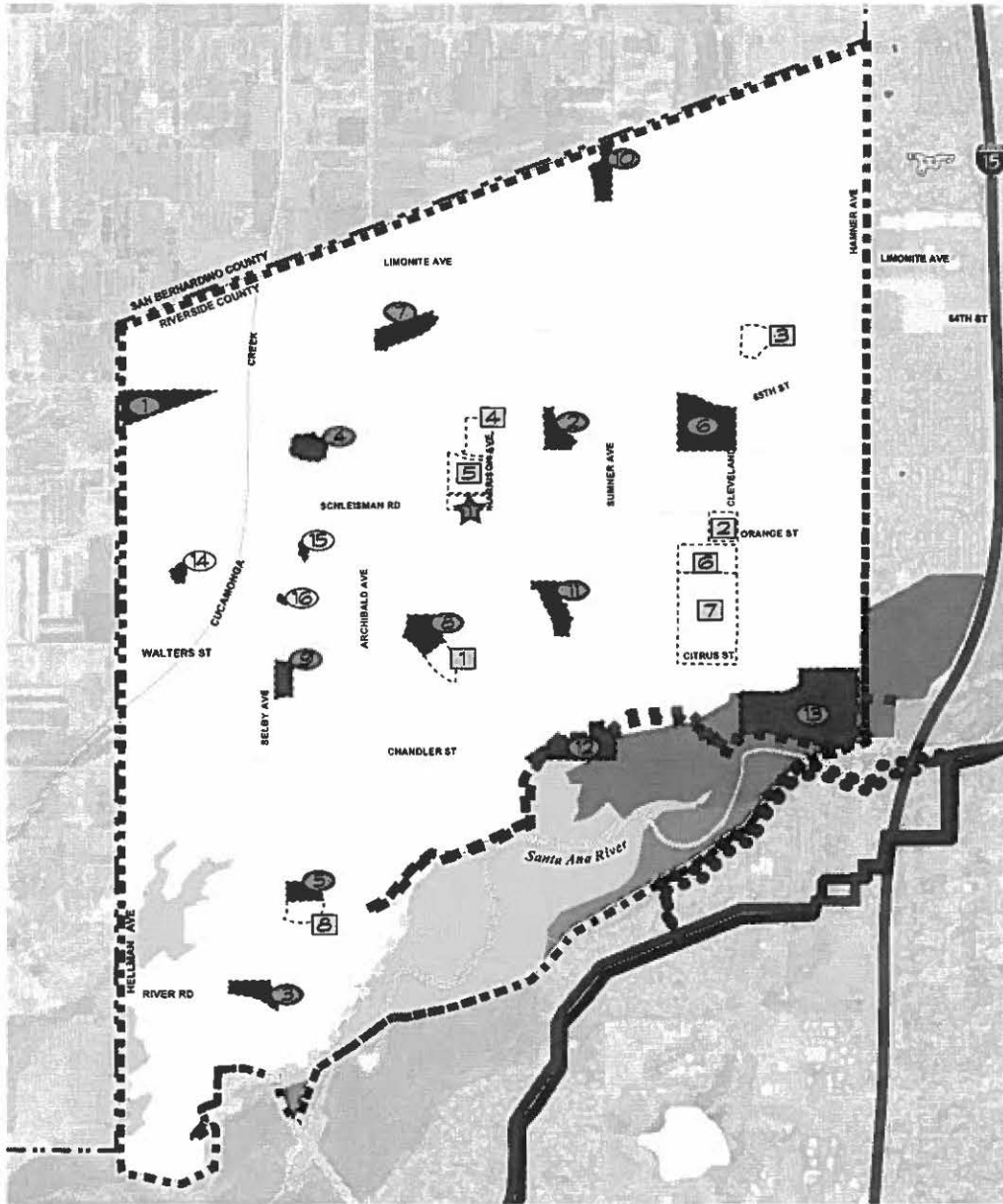
- Existing JCSD Parks**
- 1 American Heroes Park
  - 2 Cedar Creek Park
  - 3 Dairyland Park
  - 4 Deer Creek Park
  - 5 Half Moon Park
  - 6 Harada Heritage Park
  - 7 James C. Huber Park
  - 8 McCune Family Park
  - 9 Mountain View Park
  - 10 Orchard Park
  - 11 Providence Ranch Park
  - 12 Riverwalk Park
- Planned JCSD Parks**
- 13 Eastvale Community Park
- Private Parks**
- 14 Avonlea Park
  - 15 Private Park 2
  - 16 Private Park 3
- Community Center**
- Eastvale Community Center

- Trails and Bikeways**
- Riverside County General Plan**
- Regional Trail
  - Community Trail
  - Combination Trail (Regional/Class 1 Bike Path)
  - Class 2 Bike Path
  - Non-County Public and Quasi Public Lands Trails
- Santa Ana River Trail Master Plan (6/2011)**
- Existing**
- Soft Surface Trail
  - Soft Surface Spur
  - Paved Spur
- Planned**
- Soft Surface Trail
  - Multi-Use Trail
  - Paved Route
- Recommended**
- Soft Surface Trail
  - Soft Surface Spur
  - Multi-Use Trail
  - Multi-Use Spur
  - Paved Spur

- Schools**
- Existing Elementary**
- 1 Clara Barton Elementary
  - 2 Eastvale Elementary
  - 3 Harada Elementary
  - 4 Rosa Parks Elementary
- Intermediate**
- 5 Augustine Ramirez Intermediate
  - 6 River Hights Intermediate
- High School**
- 7 Eleanor Roosevelt High School
- Future Elementary**
- 8 Yorba Elementary

- Land Use**
- Agriculture
  - Conservation
  - Open Space - Recreation
  - Open Space - Water
  - Schools (Public Facility Land Use)
- Land Use Data:  
County of Riverside, Transportation and Land Management Agency,  
County Wide GIS Data - 12/2011  
(Amended to reflect known changes in land use data)





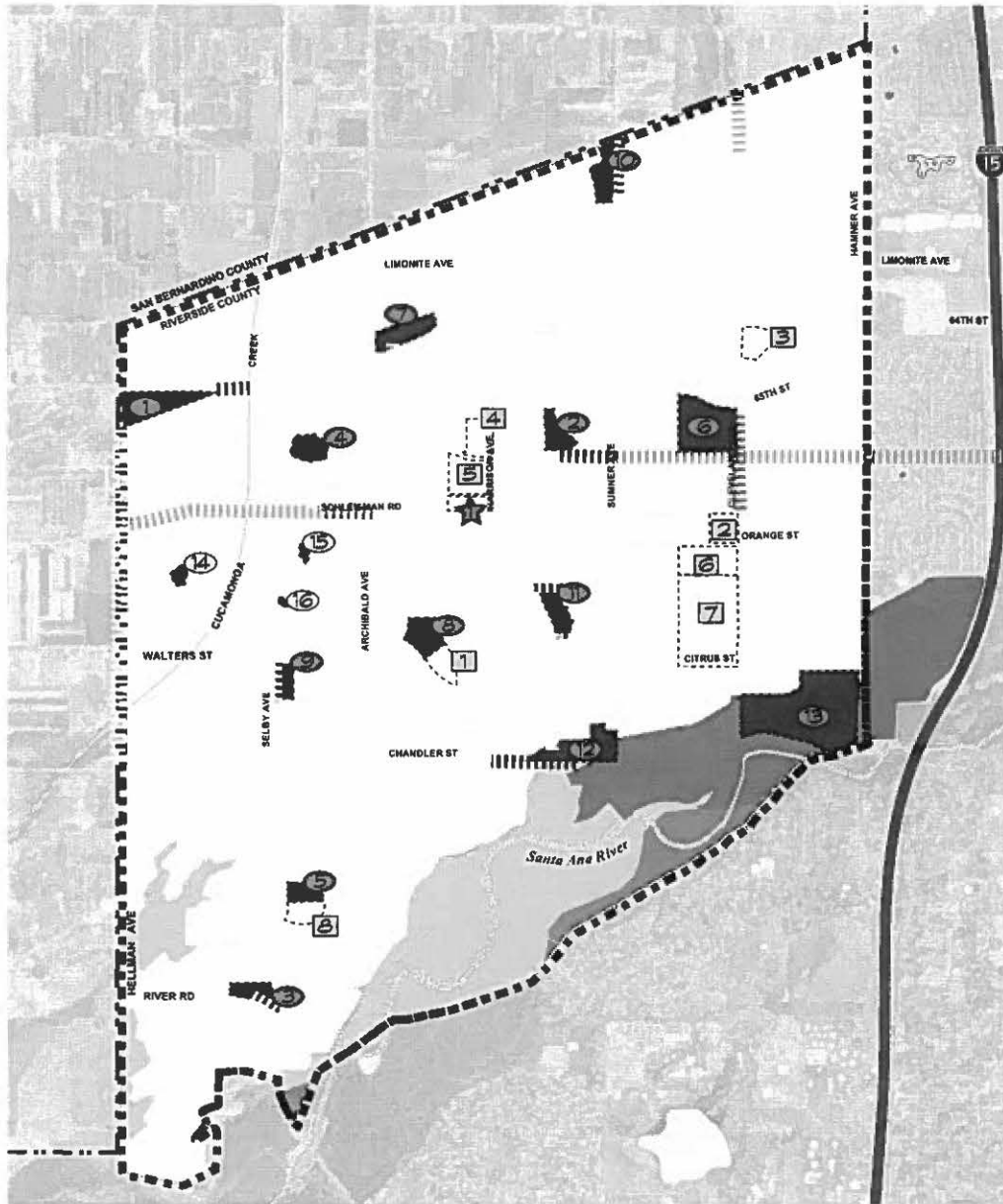
- Existing JCSD Parks**
- 1 American Heroes Park
  - 2 Cedar Creek Park
  - 3 Dairyland Park
  - 4 Deer Creek Park
  - 5 Half Moon Park
  - 6 Harada Heritage Park
  - 7 James C. Huber Park
  - 8 McCune Family Park
  - 9 Mountain View Park
  - 10 Orchard Park
  - 11 Providence Ranch Park
  - 12 Riverwalk Park
- Planned JCSD Parks**
- 13 Eastvale Community Park
- Private Parks**
- 14 Avonlea Park
  - 15 Private Park 2
  - 16 Private Park 3
- ★ **Community Center**  
Eastvale Community Center

- Trails and Bikeways**
- Santa Ana River Trail Master Plan (6/2011)
- Existing**
- Soft Surface Trail
  - Soft Surface Spur
  - Paved Spur
- Planned**
- Soft Surface Trail
  - Multi-Use Trail
  - Paved Route
- Recommended**
- Soft Surface Trail
  - Soft Surface Spur
  - Multi-Use Trail
  - Multi-Use Spur
  - Paved Spur

- Schools**
- Existing**
- Elementary**
- 1 Clara Barton Elementary
  - 2 Eastvale Elementary
  - 3 Harada Elementary
  - 4 Rosa Parks Elementary
- Intermediate**
- 5 Augustine Ramirez Intermediate
  - 6 River Heights Intermediate
- High School**
- 7 Eleanor Roosevelt High School
- Future**
- Elementary**
- 8 Yorba Elementary

- Land Use**
- Agriculture
  - Conservation
  - Open Space - Recreation
  - Open Space - Water
  - Schools (Public Facility Land Use)
- Land Use Data:  
County of Riverside, Transportation and Land Management Agency,  
County Wide GIS Data - 12/2011  
(Amended to reflect known changes in land use data)





**Existing JCSD Parks**

- 1 American Heroes Park
- 2 Cedar Creek Park
- 3 Dairyland Park
- 4 Deer Creek Park
- 5 Half Moon Park
- 6 Harada Heritage Park
- 7 James C. Huber Park
- 8 McCune Family Park
- 9 Mountain View Park
- 10 Orchard Park
- 11 Providence Ranch Park
- 12 Riverwalk Park

**Planned JCSD Parks**

- 13 Eastvale Community Park

**Private Parks**

- 14 Avonlea Park
- 15 Private Park 2
- 16 Private Park 3

- ★ **Community Center**  
Eastvale Community Center

**Trails and Bikeways**

- JCSD Changes**
- Class 2 Bike Path
  - Class 3 Bike Path
  - Connector/Signage - Easement (Class 3?)
  - Delay or Delete?

**Schools**

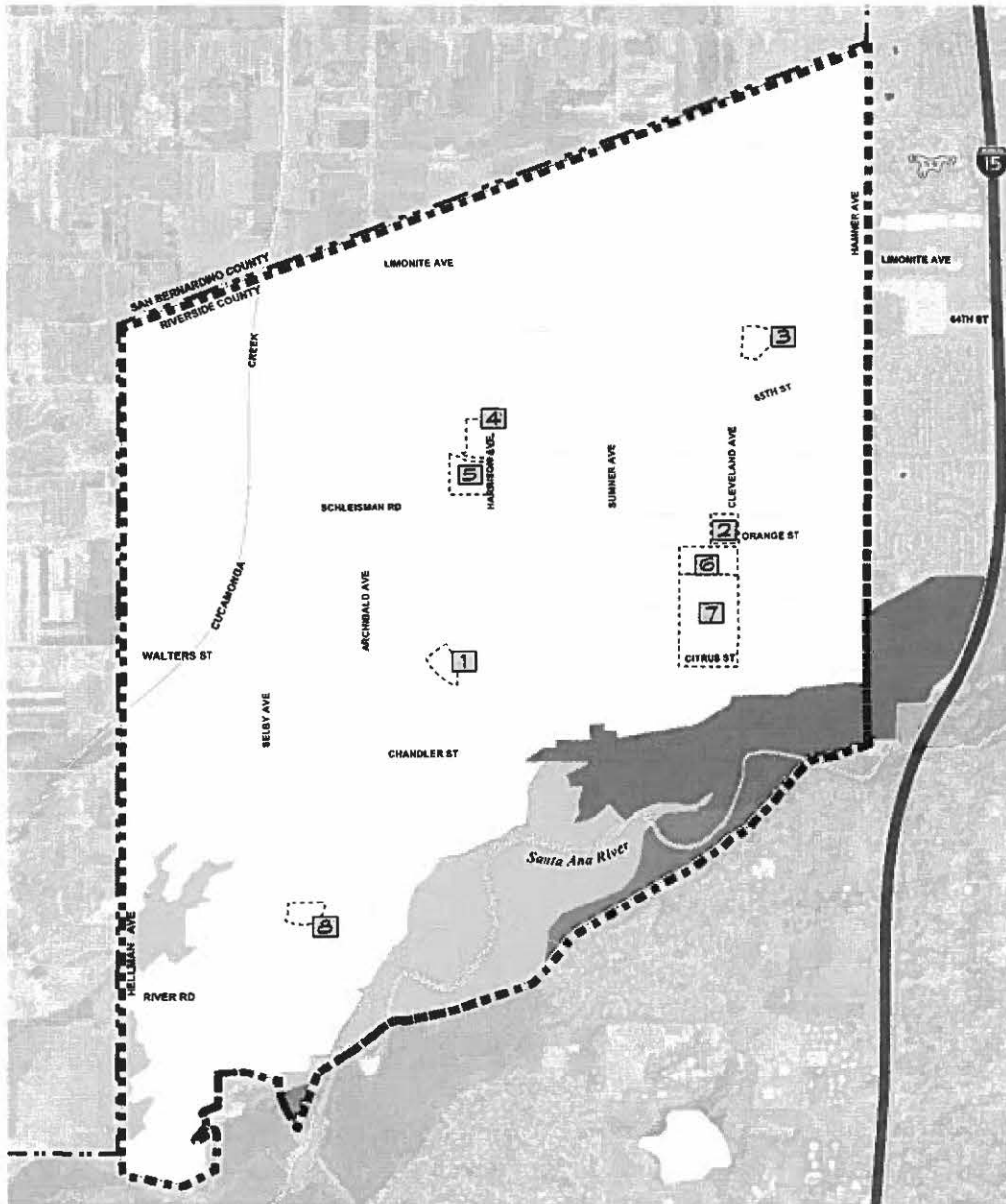
- Existing**
- Elementary**
- 1 Clara Barton Elementary
  - 2 Eastvale Elementary
  - 3 Harada Elementary
  - 4 Rosa Parks Elementary
- Intermediate**
- 5 Augustine Ramirez Intermediate
  - 6 River Heights Intermediate
- High School**
- 7 Eleanor Roosevelt High School
- Future**
- Elementary**
- 8 Yorba Elementary

**Land Use**

- Agriculture
- Conservation
- Open Space - Recreation
- Open Space - Water
- Schools (Public Facility Land Use)

Land Use Data:  
County of Riverside, Transportation and Land Management Agency,  
County Wide GIS Data - 12/2011  
(Amended to reflect known changes in land use data)





**Schools**

Existing

Elementary

1 Clara Barton Elementary

2 Eastvale Elementary

3 Harada Elementary

4 Rosa Parks Elementary

Intermediate

5 Augustine Ramirez Intermediate

6 River Heights Intermediate

High School

7 Eleanor Roosevelt High School

Future

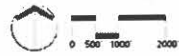
Elementary

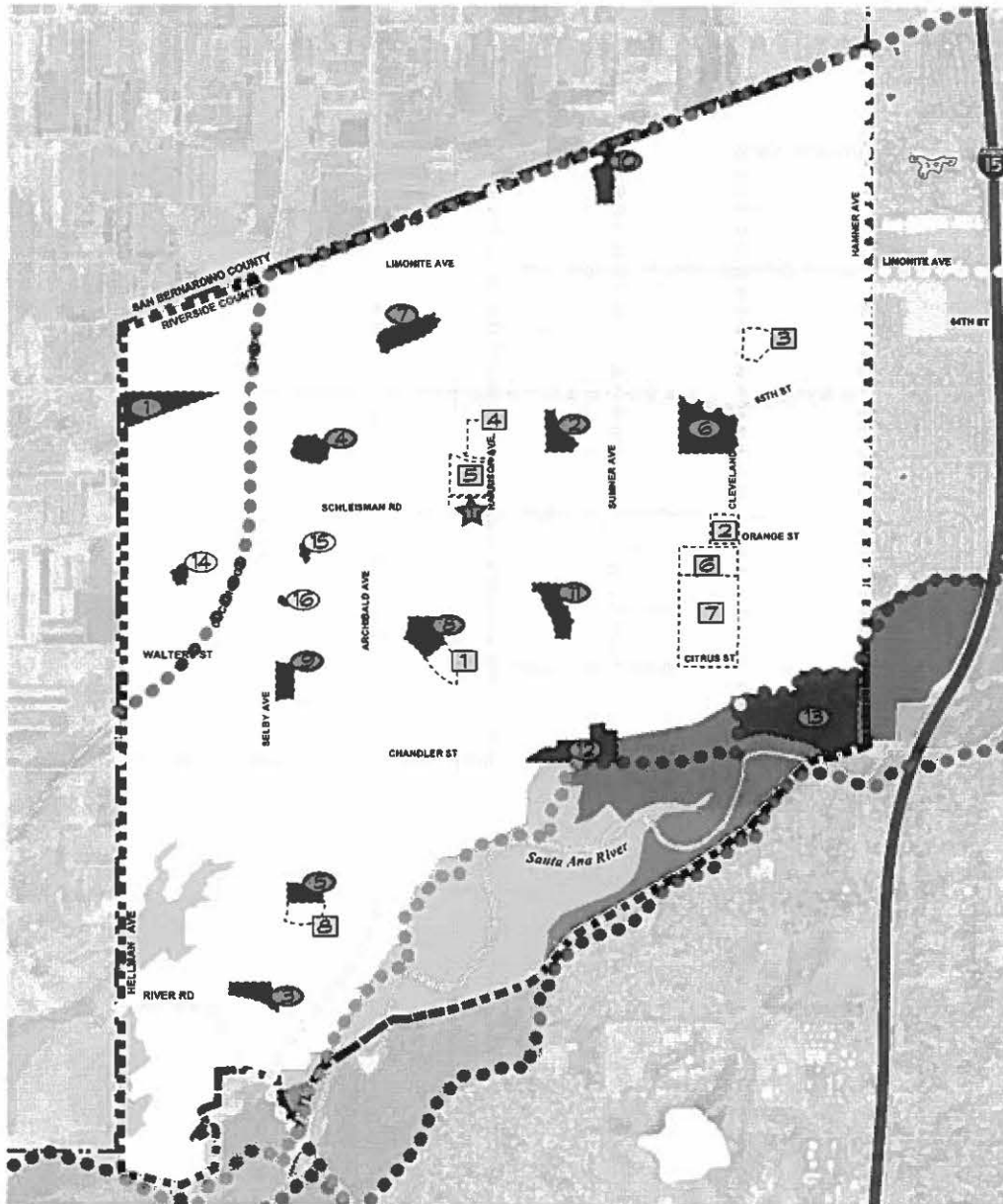
8 Yorba Elementary

**Land Use**

Agriculture  
 Conservation  
 Open Space - Recreation  
 Open Space - Water  
 Schools (Public Facility Land Use)

Land Use Data:  
 County of Riverside, Transportation and Land Management Agency,  
 County Wide GIS Data - 12/2011  
 (Amended to reflect known changes in land use data)





- Existing JCSD Parks**
- 1 American Heroes Park
  - 2 Cedar Creek Park
  - 3 Dairyland Park
  - 4 Deer Creek Park
  - 5 Half Moon Park
  - 6 Harada Heritage Park
  - 7 James C. Huber Park
  - 8 McCune Family Park
  - 9 Mountain View Park
  - 10 Orchard Park
  - 11 Providence Ranch Park
  - 12 Riverwalk Park
- Planned JCSD Parks**
- 13 Eastvale Community Park
- Private Parks**
- 14 Avonlea Park
  - 15 Private Park 2
  - 16 Private Park 3
- ★ **Community Center**  
Eastvale Community Center

- Trails and Bikeways**
- Riverside County General Plan
- Regional Trail
  - N/A Community Trail
  - Combination Trail (Regional/Class 1 Bike Path)
  - Class 2 Bike Path
  - Non-County Public and Quasi Public Lands Trails

- Schools**
- Existing**
- Elementary**
- 1 Clara Barton Elementary
  - 2 Eastvale Elementary
  - 3 Harada Elementary
  - 4 Rosa Parks Elementary
- Intermediate**
- 5 Augustine Ramirez Intermediate
  - 6 River Heights Intermediate
- High School**
- 7 Eleanor Roosevelt High School
- Future**
- Elementary**
- 8 Yorba Elementary

- Land Use**
- Agriculture
  - Conservation
  - Open Space - Recreation
  - Open Space - Water
  - Schools (Public Facility Land Use)
- Land Use Data:  
County of Riverside, Transportation and Land Management Agency,  
County Wide GIS Data - 12/2011  
(Amended to reflect known changes in land use data)



# CHAPTER 11: PARKS, RECREATION, AND OPEN SPACE



## INTRODUCTION

Parks, recreation, and open space are important components of the quality of life desired by the residents of Eastvale. This chapter of the General Plan addresses the City's goals and policies related to these issues and the actions the City will take to ensure that the residents' needs and desires for parks, recreation, and open space are recognized and addressed as the development of the city continues.

This chapter addresses three basic issues:

- Public parks
- Trails
- Open space

## PUBLIC PARKS

Eastvale is home to numerous public parks, which are owned and operated by the Jurupa Community Services District (JCSD)<sup>1</sup> and the Jurupa Area Recreation and Park District (JARPD), two independent agencies. The JCSD provides public parks in the portion of Eastvale west of Hamner Avenue. The JARPD provides public parks in the portion of Eastvale east of Hamner Avenue and in the neighboring City of Jurupa Valley. Additional information on the JCSD and the JARPD is available on their official web sites:

- Jurupa Community Services District: [www.jcsd.us](http://www.jcsd.us)
- Jurupa Area Recreation and Park District: [www.jarpd.org](http://www.jarpd.org)

<sup>1</sup> As discussed in the Circulation and Infrastructure Chapter of this General Plan, the JCSD also provides water and sewer services to most of Eastvale and to a large area outside the city.



*Eastvale's parks are a major source of civic pride and a treasured local resource.*



# CHAPTER 11: PARKS, RECREATION, AND OPEN SPACE



Both the JCSD and the JARPD have adopted their own parks master plans, which identify standards for public parks, desired locations for new facilities, and standards for the development of new parks. As of the writing of this General Plan (2012), the JCSD is in the process of updating its Master Plan.

This General Plan envisions that the City will take a more active role in defining the locations, sizes, and facilities provided at public parks, as well as in expanding the number of trails in Eastvale. At the same time, the City will continue to work with the JCSD and the JARPD on parks issues.

Eastvale's public parks are a source of local pride and are heavily used by residents for rest, recreation, and community events.

## TRAILS

While an excellent system of parks was created during the development of Eastvale's neighborhoods, there was no master plan for a system of open space or trails, and these features were not provided or were provided piecemeal. There are many opportunities for off-street trails in Eastvale, including:

- Power line corridors (*an example of such a corridor is shown in the photo at right*)
- Drainage channels and along the Santa Ana River
- Along major roadways, particularly if the width of the vehicle roadway can be reduced in the future to provide more space for trails and landscaping



As the City moves into the future and seeks to implement programs to make it easier for residents to travel within Eastvale without using their cars (*please see the Circulation and Infrastructure Chapter and Healthy Community Chapter of this General Plan for more information on this topic*), the need to provide off-street trails and connections will become more important.

This General Plan provides policies and programs to ensure that trails and open space are provided with new development—and that they are maintained in already developed areas.

# CHAPTER 11: PARKS, RECREATION, AND OPEN SPACE



This General Plan also points toward a future in which the JCSD's and the JARPD's parks function—a service typically provided by a city—becomes the responsibility of the City.

## OPEN SPACE

The Santa Ana River (*photo right*) forms the southern boundary of Eastvale and is an important local and regional open space resource. The river, which begins at the Seven Oaks Dam, flows past Eastvale on the way to the Pacific Ocean. A trail is planned along the length of the Santa River, as described by the Santa Ana Watershed Project Authority (SAWPA):



*The Santa Ana River Trail and Parkway is a 100-mile long recreational trail extending from the crest of the San Bernardino Mountains to the coast of the Pacific Ocean. The trail runs through three counties; San Bernardino County, Riverside County, and Orange County; 15 cities; and multiple special jurisdictions. Parts of the trail are currently under development. The trail is now [2012] approximately 60% complete with plans to complete the remaining portions over the next five years.*

*The variety of geography and park opportunities along the trail allow for a wide range of recreational activities including, but not limited to, hiking, bicycling, walking, running, rock climbing, "geocaching," bird watching, horse-back riding, and organized team and individual sports.<sup>2</sup>*

The City recognizes the value of this resource and has included goals and policies in this General Plan specifically related to the Santa Ana River.

**Note Regarding "Open Space":** *The issue of open space is closely related to parks and recreation. While open spaces are not "parks," they can provide important benefits for both Eastvale residents and the natural systems that still exist along the Santa Ana River. The City's goals and policies for the preservation of open space for a variety of uses (protecting natural open areas, watersheds, and environmentally sensitive areas such as creeks and riparian areas; preserving farmland; and ensuring the safety of persons and property) are addressed in the Air Quality and Conservation Chapter and the Land Use Chapter of this General Plan. The reader is invited to consult those chapters for detailed policies and actions dealing with open space in all its forms.*

<sup>2</sup> Source: <http://www.sawpa.org/SantaAnaRiverTrail.htm>



# CHAPTER 11: PARKS, RECREATION, AND OPEN SPACE



## PARKS, RECREATION, AND OPEN SPACE GOALS AND POLICIES

**GOAL OS-1:** Expand outdoor recreation opportunities for all residents.

**GOAL OS-2:** Provide active and passive park facilities and recreation programs that satisfy the leisure time and recreation needs of all residents.

**GOAL OS-3:** Develop a citywide trails system that provides safe, convenient, and attractive off-street opportunities for residents to travel, recreate, and exercise.

**GOAL OS-1:** Maintain the Santa Ana River corridor as an important resource for open space, recreation, wildlife, and scenic beauty.

## POLICIES

Policies are provided below in the following topical areas:

- Parks Policies (page 11-4)
- Trails Policies (page 11-6)
- Open Space Policies (page 11-7)

## PARKS POLICIES

**POLICY OS-1:** Provide for the needs of all people in the parks system, regardless of their socioeconomic status, ethnicity, physical capabilities, or age.

**POLICY OS-2:** Require the provision of recreation facilities concurrent with the development they serve.

**POLICY OS-3:** Require new development to provide implementation strategies for the funding of both active and passive parks and recreational sites.

# CHAPTER 11: PARKS, RECREATION, AND OPEN SPACE



**Implementation OS-3.1:** The City shall pursue the implementation of funding mechanisms to provide for the long-term maintenance of parks and/or trails in those instances where funding is not available from other sources.

**POLICY OS-4:** The City of Eastvale supports the development, maintenance, and enhancement of parks and trails serving a variety of needs at the neighborhood, community, and city-wide level. To accomplish this in the future, the City will seek to establish its own Parks and Recreation Department and to assume control of parks and related facilities currently operated by the Jurupa Community Services District and the Jurupa Area Recreation and Park District.

**Implementation OS-4.1:** The City shall conduct a “nexus study” to determine the demand for parkland in the city and the reasonable relationship between the demand and the type of development project to support the imposition of parkland dedication and/or fees.

**Implementation OS-4.2:** The City shall adopt a comprehensive Parks and Trails Master Plan which provides parks criteria, planned parks, and off-street recreational, walking, equestrian, and multi-use trails. Prior to the adoption of the parks standards and the Parks and Trails Master Plan, the City shall require the provision of parks as part of development projects to implement the City’s parkland standards. The size, location, and facilities provided in these parks may be determined on a case-by-case basis.

**Implementation OS-4.3:** To the extent consistent with applicable state law, the City shall develop criteria defining the types of parks and trails to be developed, including criteria defining desired:

- Park types and sizes
- Park facilities by type
- Locational criteria
- Spacing
- Trails and related facilities by type and function
- Maintenance requirements

**POLICY OS-5:** Until the City establishes its own parks operation in fulfillment of Policy OS-4, the City will work with the Jurupa Community Services District and the Jurupa Area Recreation and Park District to provide parks, recreation, and trails.

# CHAPTER 11: PARKS, RECREATION, AND OPEN SPACE



**Implementation OS-5.1:** As part of the review of development projects, ensure that public parks and trails are provided which meet the City's criteria and which implement the City's Parks and Trails Master Plan (once it has been adopted).

**Implementation OS-5.2:** Coordinate with the JCSD and the JARPD in the review of residential developments requiring parks and recreation facilities.

**POLICY OS-6:** New residential developments may be required to, at a minimum, provide parks consistent with the Quimby Act (California Government Code Section 66477), through land dedication, fees in lieu, or on-site improvements at a standard of 5 acres of land for parks per 1,000 residents. Land dedication and/or payment of in-lieu fees shall be required consistent with state law. Land dedication and/or fees may be required pursuant to other policies in this chapter with or without the use of the authority provided in the Quimby Act, or in combination with the Quimby Act and other legal authority.

**Implementation OS-6.1:** The City will adopt standards designating which types of lands shall be considered "parks" for the purpose of implementing Quimby Act requirements.

## TRAILS POLICIES

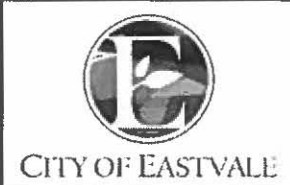
**POLICY OS-7:** The trails system in Eastvale should provide for connectivity, so that all trails are linked to the extent possible for greater use as recreational and travel routes. The following features should be included in the trails system:

- Trails should link residential areas with parks, commercial and office areas, and other destinations.
- Trails along major roadways should avoid meanders or other design features which make bicycle use less convenient or safe.
- Trails should be located off-street to the extent possible.
- Easements such as access roads should be placed in joint use as trails.

*Please see Action OS-6.1, above.*

**POLICY OS-8:** Trails should be designed with the safety of users and adjacent property owners in mind. To the extent possible, the bicycle trails system should provide safe, off-street options suitable for use by children and less-experienced riders.

# CHAPTER 11: PARKS, RECREATION, AND OPEN SPACE



**Implementation OS-8.1:** Involve the Eastvale Police Department and the Riverside Council Fire Department in the review of proposed trail locations and designs.

**Implementation OS-8.2:** Coordinate with the JCSD and the JARPD in the review of projects containing trails.

**POLICY OS-9:** Trails which parallel streams should be primarily located beyond the riparian corridor and wetlands to minimize wildlife impacts and shall be restricted to non-motorized traffic.

*Please see the Circulation and Infrastructure Chapter of this General Plan for policies related to adjusting the City's roadway system to provide additional opportunities for off-street trails.*

## **OPEN SPACE POLICIES**

**POLICY OS-10:** The City will work with other local and regional agencies to implement the master plan for the Santa Ana River.

**POLICY OS-11:** The City will encourage development along the Santa Ana River to take advantage of river views and to provide access to the river consistent with safety and the need to protect sensitive resources. Examples include:

- Orienting development to face the river and take advantage of views.
- Placing single-loaded roadways adjacent to the river to open up and maintain views and access (where consistent with ownership and restrictions on public access).