

For further information on an agenda item, please contact the City at  
12363 Limonite Ave. Suite 910, Eastvale, CA 91752

**AGENDA**  
**MEETING OF THE PUBLIC SAFETY COMMISSION**  
**OF THE CITY OF EASTVALE**  
**Tuesday, June 24, 2014**  
**4:30 P.M.**

**Rosa Parks Elementary, 13830 Whispering Hills Drive, Eastvale, CA 92880**

**1. CALL TO ORDER: 4:30 p.m.**

**2. ROLL CALL/PLEDGE OF ALLEGIANCE:**

Commission Members – Christian Da Costa, Robert Johnson, and Albert Randall  
Vice-Chairperson -  
Chairperson - Melonee Cruse

**3. PUBLIC COMMENT/CITIZEN PARTICIPATION:**

*This is the time when any member of the public may bring a matter to the attention of the Public Safety Commission that is within the jurisdiction of the Commission. The Ralph M. Brown act limits the Commission's and staff's ability to respond to comments on non-agendized matters at the time such comments are made. Thus, your comments may be agendized for a future meeting or referred to staff. The Commission may discuss or ask questions for clarification, if desired, at this time. Although voluntary, we ask that you fill out a "Speaker Request Form", available at the side table. The completed form is to be submitted to the Recording Secretary prior to being heard. Public comment is limited to two (2) minutes each with a maximum of six (6) minutes.*

**4. NEW BUSINESS:**

**4.1 Selection of New Vice Chairperson.**

Recommendation: Select new Vice Chairperson for Public Safety Commission.

**5. MINUTES:**

**5.1 Minutes – May 27, 2014 Meeting.**

Recommendation: Approve the minutes from the May 27, 2014 Meeting.

**6. TRAFFIC CONCERNS:**

**6.1 Monthly Police Department Update.**

Recommendation: Receive verbal update.

**7. NEIGHBORHOOD WATCH:**

**7.1 Safety Expo.**

Recommendation: Provide direction on Safety Expo.

**8. EMERGENCY OPERATIONS:**

**8.1 Ready Eastvale.**

Recommendation: Provide direction on Ready Eastvale campaign.

**9. COMMUNITY OUTREACH FOR CRIME PREVENTION:**

**9.1 Public Safety, Crime Prevention And Traffic Related Communications.**

Recommendation: Receive and File.

**10. CITY STAFF REPORT:**

**11. COMMISSION COMMUNICATIONS:**

*(Committee Reports, Agenda Items, Meeting Requests and Review, etc.)*

*This is an opportunity for the Commission Members to report on their activities, to bring a matter to the attention of the full Commission and staff, and to request agenda items. Any matter that was considered during the public hearing portion is not appropriate for discussion in this section of the agenda. NO ACTION CAN BE TAKEN AT THIS TIME.*

**12. ADJOURNMENT:**

*The next regular meeting of the Eastvale Public Safety Commission will be held on July 22, 2014 at 4:30 p.m. at Rosa Parks Elementary School.*

*In compliance with the Americans with Disabilities Act, if you need special assistance to participate in this meeting, please contact the City of Eastvale. Notification 48 hours prior to the meeting will enable the City to make reasonable arrangements to ensure accessibility to this meeting.*

**POSTING STATEMENT:**

*I, Carol Jacobs, City Clerk, or my designee hereby certify that a true and correct, accurate copy of the foregoing agenda was posted on June 19, 2014, seventy-two (72) hours prior to the meeting per Government Code 54954.2.*

*12363 Limonite Ave. Suite 910, Eastvale, CA 91752*

*Rosa Parks Elementary School 13830 Whispering Hills Drive*

*Eastvale Library 7447 Scholar Way*

*City of Eastvale Website, [eastvaleca.gov](http://eastvaleca.gov)*



# City of Eastvale

## Public Safety Commission Meeting Agenda

### Staff Report

---

**MEETING DATE: June 24, 2014**

---

#### ***1. CALL TO ORDER***



# City of Eastvale

## Public Safety Commission Meeting Agenda

### Staff Report

---

**MEETING DATE: June 24, 2014**

---

#### ***2. ROLL CALL/PLEDGE OF ALLEGIANCE***



# City of Eastvale

## Public Safety Commission Meeting Agenda

### Staff Report

---

**MEETING DATE: June 24, 2014**

---

### **3. *PUBLIC COMMENT/CITIZEN PARTICIPATION***



# City of Eastvale

## Public Safety Commission Meeting Agenda

### Staff Report

---

**MEETING DATE: June 24, 2014**

---

#### **4. *NEW BUSINESS***

4.1 Selection of New Vice Chairperson.



# City of Eastvale

## Public Safety Commission Meeting Agenda

### Staff Report

---

**MEETING DATE: June 24, 2014**

---

**5. *MINUTES***



**MINUTES**  
**MEETING OF THE PUBLIC SAFETY COMMISSION**  
**OF THE CITY OF EASTVALE**  
**Tuesday, May 27, 2014**  
**4:30 P.M.**

**Rosa Parks Elementary, 13830 Whispering Hills Drive, Eastvale, CA 92880**

**1. CALL TO ORDER:** 4:32 p.m.

**2. ROLL CALL/PLEDGE OF ALLEGIANCE:**

Commissioners Present – Commissioners Cruse, Randall, and Vice-Chairperson Kiltz.

Commissioners Absent – Commissioner Johnson

Staff Members Present – City Manager Jacobs, Lieutenant Yates, Fire Chief Williams, Management Analyst Rowe, Traffic Engineer Semon, and Recording Secretary Wuence.

The Pledge of Allegiance was presented by Vice-Chairman Kiltz.

**3. PUBLIC COMMENT/CITIZEN PARTICIPATION:**

Chris Hook, a resident, noted concern about water tankers from nearby construction that use the fire hydrants at the corner of Wells Springs and Schleisman. The large hoses attached to the tankers are left in the roadway and cars have to swerve to avoid them, creating an unsafe environment in the mornings for children going VanderMolen Elementary School.

Staff would check with inspectors to find out if the tankers are permitted to use the hydrants and leave hoses across the roadway and follow up with Mr. Hook.

**4. NEW BUSINESS:**

**4.1 Selection of New Chairperson.**

Recommendation: Select new Chairperson for Public Safety Commission.

**Motion: Moved by Kiltz, seconded by Randall to appoint Commissioner Cruse as Chairperson.**

**Motion carried 3-0-1 with Randall, Cruse, and Kiltz voting aye and Johnson absent.**

Vice-Chairperson Kiltz noted that he is stepping down from the Commission and this would be his last meeting as he and his family are moving out of the county.

Chairperson Cruse introduced the newest Commissioner, Albert Randall. Commissioner Randall noted that he is a resident of Eastvale since 2008. He is a

retired Air Force Officer and Aerospace Executive. He is a non-practicing physician and President of the Norco-Eastvale Rotary.

**5. MINUTES:**

**5.1 Minutes – March 25, 2014 Meeting.**

Recommendation: Approve the minutes from the March 25, 2014 Meeting.

**Motion: Moved by Cruse, seconded by Kiltz, to approve the minutes as presented.**

**Motion carried 3-0-1 with Randall, Cruse, and Kiltz voting aye and Johnson absent.**

**6. TRAFFIC CONCERNS:**

**6.1 Monthly Police Department Update.**

Recommendation: Receive and file.

City Manager Jacobs provided the staff report for the item.

Lieutenant Yates noted that the numbers from the last DUI operation were reviewed and he noted that only 1 DUI arrest had been made. In addition to DUI checkpoints, police “chase” cars drive in the area during the operation looking for possible drivers under the influence. He noted that recent legislation allows the City to recover costs of \$649.00 from DUI drivers that are involved in traffic collisions.

Lieutenant Yates noted that from January through April there were 147 traffic collisions, with 64 reports taken. He noted that the new CrossRoads program would be used to track all traffic collisions in the City, including historical statistics.

Lieutenant Yates noted that the investigation into the recent hit and run pedestrian fatality was ongoing and there are great leads being followed. The Police Department would be handing out flyers on May 29 to drivers at the location of the incident at approximately the same time the incident occurred. The flyers would make the public aware of a possible witness to the accident and hopefully the witness would come forward.

There have been 55 marijuana grow houses in the last two years. The last one discovered was May 14. Prior to that, the amount of grow houses being discovered were 2-3 per week, indicating the numbers have gone down significantly. It appears the group running the operations is working out of the San Gabriel Valley area and 17 persons have been taken into custody. The focus of the SET team and the City is to get the grow operations out of Eastvale. The homes are primarily rental homes and the recently implemented Rental

Registration Program requires property owners to inspect property with City staff and annually certify that the property is being used as a rental home. Chairperson Cruse requested that the PowerPoint presentation Lieutenant Yates uses at Town Hall meetings with warning signs of marijuana grow houses be added to the City website.

Vice-Chairperson Kiltz noted that there have been complaints about speed and recent traffic collisions on River Road crossing over the bridge at Baron Drive. He requested Police have a stronger presence in that area to enforce speed limits.

## **6.2 Rosa Parks Elementary Speed Sign Update.**

Recommendation: Receive and file.

City Manager Jacobs provided the staff report for the item. An application for a Safe Routes to School grant for \$479,000 has been submitted. It would put traffic control devices throughout the City, including signalized crossings, radar speed signs, a traffic signal, and bike lanes. The bike lanes would run on Scholar Way between Limonite and Citrus, on Citrus between Scholar Way and Sumner, and on Harrison between Limonite and Schleisman.

## **7. NEIGHBORHOOD WATCH:**

### **7.1 Ready Eastvale Campaign.**

Recommendation: Provide direction on the Ready Eastvale Campaign.

Management Analyst Rowe provided the staff update for the item. The City was awarded a grant for \$10,207 to hold Community Emergency Response Team (CERT) classes. CERT classes for Eastvale have been tentatively scheduled for July and September.

Chairperson Cruse noted that she would like to tie in the Neighborhood Watch Groups to the Ready Eastvale campaign. There was discussion about creating a Citizens Committee to serve as a link between Neighborhood Watch Groups and the Public Safety Commission.

It was decided that staff would create a list of recommended programs based on the Laguna Niguel Readiness model, create an updated map of Neighborhood Watch zones and present a formal program to the Commission. Once the Commission approves the Neighborhood Watch/Ready Eastvale Campaign, a request for volunteers could be sent out.

## **8. EMERGENCY OPERATIONS:**

There were no Emergency Operations Items.

## **9. COMMUNITY OUTREACH FOR CRIME PREVENTION:**

9.1 **Public Safety, Crime Prevention And Traffic Related Communications.**

Recommendation: Receive and file.

City Manager Jacobs provided the staff report for this item. She noted that there have been 27 posts promoting crime and fire prevention and safety in the last month to social media by Public Information Officer Nissen. The City is working with JCSD, CNUSD and Inland Empire Bicycle Alliance on creating a Public Relations campaign for schools and parents regarding bicycle safety. A Bicycle Rodeo event is planned for schools as well. The campaign is expected to be in place before the beginning of the next school year.

Resident Chris Hook noted that his contact at helmet manufacturer Shoei had retired and he was unable to request helmet donations for the Bicycle Rodeo. City Manager Jacobs would contact the Inland Empire Bicycle Alliance to inquire about possible helmet donations.

City Manager Jacobs noted that the City's Facebook page draws a lot of public comments and information about traffic accidents or concerns and general safety issues.

**10. CITY STAFF REPORT:**

There was no City Staff report.

**11. COMMISSION COMMUNICATIONS:**

Vice-Chairperson Kiltz thanked staff, police and the fire department for all their efforts and support.

Commissioner Randall noted that he was pleased to join the Commission and get involved.

Chairperson Cruse thanked Vice-Chairperson Kiltz for the hard work he put into the community and the Commission.

**12. ADJOURNMENT:**

There being no further business, the meeting was adjourned at 5:32 p.m.

*Submitted by Margo Wuence, Recording Secretary  
Reviewed and edited by Carol Jacobs, City Manager/City Clerk*



# City of Eastvale

## Public Safety Commission Meeting Agenda

### Staff Report

---

MEETING DATE: June 24, 2014

---

6. *TRAFFIC CONCERNS*

6.1 Monthly Police Department Update



**City of Eastvale**  
**Public Safety Commission Meeting Agenda**  
**Staff Report**

---

**MEETING DATE: June 24, 2014**

---

**7.     *NEIGHBORHOOD WATCH***



**City of Eastvale**  
**Public Safety Commission Meeting Agenda**  
**Staff Report**

---

**MEETING DATE: JUNE 24, 2014**

**TO: PUBLIC SAFETY COMMISSION**

**FROM: CAROL JACOBS, CITY MANAGER**

**SUBJECT: SAFETY EXPO**

---

**RECOMMENDATION: PROVIDE DIRECTION ON SAFETY EXPO**

---

**BACKGROUND:**

In an effort to target-harden and prepare residents for any type of disaster situation, some cities throughout southern California hold a yearly Safety Expo.

**DISCUSSION:**

Different varieties of Safety or Disaster Preparedness Expos are held each year throughout cities in southern California. These Expos are held to provide residents with information on a diverse number of subjects. Subjects can include: home security, disaster preparedness, child safety, personal security, and pet emergency preparedness. It can include static displays of equipment from law enforcement agencies, areas for children including bounce houses, and a variety of other displays.

Typically, Safety Expos are held in a large parking lot. This allows for large equipment and displays to be included in the event. However, the event could also be held in a large auditorium or open room. A wide-range of exhibitors can be contacted: City-sponsored programs; County-sponsored programs; vendors for home security items; vendors for personal security items; emergency/safety equipment vendors. Public safety agencies, utilities, and community groups can provide helpful tips and information to residents.

September is Disaster Preparedness Month. This would be an ideal month to hold a Safety Expo. If the Commission decides to hold a Safety Expo this September, a site for the Expo would have to be decided and secured as soon as possible. The Commission would also need to decide how large the Safety Expo would be, and what types of vendors/displays to have.

**FISCAL IMPACT:**

The fiscal impact would be dependent on what type of Safety Expo is held.

**ATTACHMENTS:**

- City of Dana Point – Emergency Preparedness Expo Information

Prepared by: Kirsten Rowe, Management Analyst

Reviewed by: Carol Jacobs, City Manager  
John Cavanaugh, City Attorney



# Emergency Preparedness Expo

*City of Dana Point Emergency Preparedness Expo*

*Saturday, August 24, 2013, from 10am until 2pm*

*Dana Hills High School, 33301 Golden Lantern, Dana Point*

*Exhibits, Demonstrations, and Emergency Information*

*Join us for this year's emergency preparedness expo, featuring dozens of exhibitors and vehicle displays, and learn how to protect yourself and your family in an emergency. Receive helpful tips and information from public safety agencies, utilities, community groups, vendors, and more.*

*Map of the 2013 Emergency Preparedness Expo available [here](#).*



***Participating organizations include:***

- ***Orange County Sheriff's Department***
- ***Orange County Fire Authority***
- ***Dana Point Community Emergency Response Team (CERT)***
- ***Tri-Cities RACES amateur radio***
- ***National Weather Service***
- ***Federal Bureau of Investigation***
- ***ReadyOC***
- ***Orange County Vector Control District***
- ***OC Lifeguards***
- ***Numerous emergency/safety equipment vendors***



*...and many more*



***The Dana Point Emergency Preparedness Expo is perfect for the whole family:***

- ***Receive important emergency information from first responders and others***
- ***Take pictures with emergency vehicles***
- ***See equipment that responds to emergencies of all types in the community***



***The Dana Point Emergency Preparedness Expo  
is sponsored by Southern California Edison***



An *EDISON INTERNATIONAL* Company  
San Onofre Nuclear Generating Station

***For more information, please call (949) 248-3579 or email [jkirchner@danapoint.org](mailto:jkirchner@danapoint.org).***

**List of Exhibitors:**

- 1) Orange County Fire Authority (OCFA)
- 2) Doctor's Ambulance Authority (CASA)
- 3) Coastal Animal Services of America
- 4) Orange County Boy Scouts of America
- 5) San Diego Gas & Electric
- 6) Coast Guard Auxiliary
- 7) Federal Bureau of Investigation (FBI)
- 8) Premier Recreation Services
- 9) US Customs & Border Protection
- 10) Tri-Cities RACES
- 11) California Highway Patrol
- 12) New York Life Insurance Company
- 13) Thrive Life
- 14) South Coast Water District
- 15) ReadyOC
- 16) OC Lifeguards
- 17) Dana Point Chamber of Commerce
- 18) Orange County Vector Control District
- 19) "Raise the Flag" and Survival Products
- 20) Be Ready Earthquake and Survival Products
- 21) Orange County Sheriff's Department Emergency Management Division
- 22) AlertOC
- 23) National Weather Service
- 24) ...
- 25) City of Dana Point
- 26) ...
- 27) California Geological Survey
- 28) Dana Point Police Services/Orange County Sheriff's Department

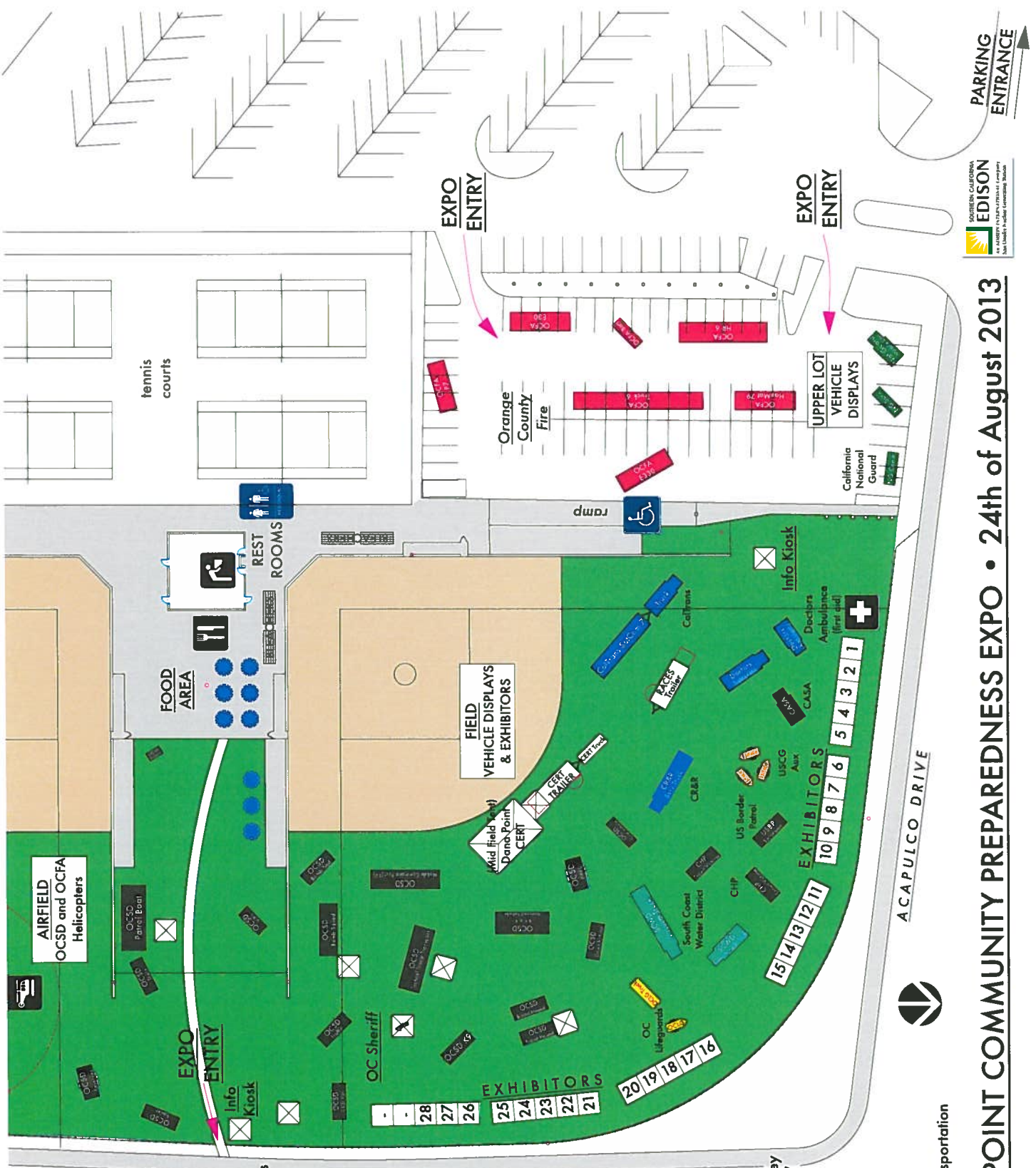
**GOLDEN LANTERN**

Mid Field Tent - CERT

- Dana Point Community Emergency Response Team
- California National Guard
- California Department of Transportation (CalTrans)



**DANA POINT COMMUNITY PREPAREDNESS EXPO • 24th of August 2013**



PARKING ENTRANCE



# City of Eastvale

## Public Safety Commission Meeting Agenda

### Staff Report

---

**MEETING DATE: June 24, 2014**

---

#### **8. *EMERGENCY OPERATIONS***



**City of Eastvale**  
**Public Safety Commission Meeting Agenda**  
**Staff Report**

---

**MEETING DATE: JUNE 24, 2014**

**TO: PUBLIC SAFETY COMMISSION**

**FROM: CAROL JACOBS, CITY MANAGER**

**SUBJECT: READY EASTVALE**

---

**RECOMMENDATION: PROVIDE DIRECTION ON READY EASTVALE CAMPAIGN**

---

**BACKGROUND:**

At the May 27, 2014 Public Safety Commission meeting, the Commission approved the adoption of a “Ready Eastvale” campaign, which would help educate Eastvale residents on how to be prepared for any type of emergency.

**DISCUSSION:**

It is suggested that the Ready Eastvale campaign be structured into 4 parts:

- Be Prepared
- Be Trained
- Be Involved
- Be Aware

Each of these components would be comprised of different areas of education/activities/training. The Public Safety Commission could establish a website (such as [www.readyeastvale.com](http://www.readyeastvale.com)) that would make this information readily available and all in one place.

***Be Prepared***

This component could provide residents with information on how to be prepared for different types of emergencies. This information would include: items to include in survival kits for homes, cars, and the workplace; preparing a disaster plan; how to check and turn off utilities; means of communicating after a disaster; etc. These forms could be branded with a “Ready Eastvale” logo, and could also include information that is specific to Eastvale.

### ***Be Trained***

This component could provide residents with training opportunities being held both in Eastvale and surrounding communities. Eastvale's CERT program would be included in this component. Classes could be continually updated, providing residents with a place to find up-to-date training opportunities. The Commission could create a list of "ideal" trainings that each resident should complete. These classes could include: first aid/CPR/AED training, basic CERT classes, and National Incident Management System (NIMS) online courses.

### ***Be Involved***

This component could provide residents with volunteer opportunities. These volunteer opportunities could be within Eastvale, and could also be in surrounding cities or within Riverside County.

### ***Be Aware***

This component could be where activities/training historically geared towards the traditional "Neighborhood Watch" campaign. Since traditional "Neighborhood Watch" campaigns are difficult to keep active, some agencies have switched towards a more global approach. Instead of establishing a Neighborhood Watch campaign, the Commission could create an "Eastvale On Watch" campaign. As opposed to Neighborhood Watch (which encourages residents to be aware of their neighborhood), Eastvale On Watch would encourage residents to be aware of their surroundings no matter where they are. Training could be provided to residents on what kind of suspicious activity to look for, and what to do if they see something suspicious. This would encourage residents to keep a safe community, not just a safe neighborhood.

The Commission can also establish an "I Am Ready Eastvale" challenge. From each of the four components, there could be "core" activities identified. Once a resident completes all of the core activities, they could be honored with a certificate presented at a City Council meeting, highlighting their accomplishment.

Give-away materials such as stickers, magnets, etc. could be purchased that would have the Ready Eastvale logo on it. These could help to reinforce the message of the campaign, as well as to encourage participation.

### **FISCAL IMPACT:**

The fiscal impact would be dependent on what components of Ready Eastvale are agreed to.

**ATTACHMENTS:**

None.

Prepared by: Kirsten Rowe, Management Analyst  
Reviewed by: Carol Jacobs, City Manager  
John Cavanaugh, City Attorney





**City of Eastvale**  
**Public Safety Commission Meeting Agenda**  
**Staff Report**

---

**MEETING DATE: June 24, 2014**

---

**9. *COMMUNITY OUTREACH FOR CRIME PREVENTION***

**9.1 Public Safety, Crime Prevention and Traffic Related Communications**



# City of Eastvale

## Public Safety Commission Meeting Agenda

### Staff Report

---

**MEETING DATE:** JUNE 24, 2014

**TO:** PUBLIC SAFETY COMMISSIONERS

**FROM:** MICHELE NISSEN, PUBLIC INFORMATION OFFICER

**SUBJECT:** PUBLIC SAFETY, CRIME PREVENTION AND TRAFFIC  
RELATED COMMUNICATIONS

---

**RECOMMENDATION:** RECEIVE AND FILE

---

#### **BACKGROUND:**

There have been approximately sixteen (16) announcements and/or press releases published on the City's website and social media from May 22, 2014 to June 18, 2014. These communications relate to Sheriff's Department activity, crime prevention and awareness, as well as traffic or construction projects that may impact traffic conditions in Eastvale.

#### **DISCUSSION:**

These announcements and/or press releases have been published on the City's website, sent out through e-notification, and posted on social media including: Facebook, Twitter, LinkedIn, and Instagram (when appropriate).

City staff are working in collaboration with Jurupa Community Services District (JCSD), Corona Norco Unified School District (CNUSD), Riverside County Sheriff's Department, and the Inland Empire Bicycle Alliance to host a Bicycle Skills Clinic and Rodeo. The purpose of this event would be to create a community event focused on bicycle awareness, bicycle safety education, and teaching bicycle skills to our youth. The goal is to empower our community with the necessary skills, situational awareness, and rules of the road when it comes to sharing the road with bicycles. Creating a bicycle-aware and bicycle-friendly community may help reduce the vehicle versus bicycle incidents, particularly around schools sites. The first collaborative meeting occurred on June 17, 2014. The City Manager will give an update on the meeting results. This event is currently in the development phase. Additional details will be announced as they become available. Public Works is also researching various infrastructure modifications based on input from the Inland Empire Bicycle Alliance.

**FISCAL IMPACT:**

None

**ATTACHMENTS:**

Press releases

Website announcements

Prepared by: Michele Nissen, Public Information Officer

Reviewed by: City Manager, Carol Jacobs

City Attorney, John Cavanaugh

## News

### COUNTY FIRE CHIEF CLOSES HAZARDOUS HIKING AREAS DUE TO FIRE DANGER

**Posted Date:** 6/18/2014 9:30 AM

CAL FIRE/Riverside County Fire Chief, John R. Hawkins received approval from the Riverside County Board Supervisors to close seven hiking areas throughout Riverside County on June 17, 2014. The closures will remain in effect until further notice in the following areas:



- Avery Canyon (Gibbel Road east of State Street in Hemet)
- North Mountain and Indian Canyon (San Jacinto area)
- Whitewater Canyon (Cabazon, north of Palm Springs)
- Nuevo/Lakeview (east of Menifee Road and San Jacinto Avenue)
- Minto (Sage)
- Reinhardt Canyon (north of Highway 74 and California Avenue in Hemet)
- Ramona Bowl and Bautista Canyon (southeast Hemet)

Riverside County Ordinance 787.6 restricts public access to these identified hazardous fire areas unless private property access is required. Public roadway travel is permitted, providing travel is confined to those surfaces within hazardous fire areas. Those violating the Ordinance may be subject to a minimum fine of \$100 for first-time offenses.

Future closures may be implemented based upon weather conditions, fuel moisture and increased wildland fire threat. For additional information on the closure of these hazardous fire areas, please contact the CAL FIRE/Riverside County Fire Department Public Affairs Bureau at (951) 940-6985.

###

[View Press Release](#)

[More News »](#)

## News

### DUI / Driver's License Checkpoint

**Posted Date:** 6/18/2014 9:00 AM

**Agency:** Eastvale Police

**Station Area:** Jurupa Valley

**Written Date:** June 18th, 2014 **Time:** 8:00 am

**Incident Date:** June 20th, 2014 **Time:** 7:00 p.m. – 3:00 a.m.

**Incident Location:** An Undisclosed Location within City Limits

**Reporting Officer:** Deputy Cuadra

**File Number(s):** To Be Determined

#### Details:

The Riverside County Sheriff's Department / Jurupa Valley Station / Eastvale Police Department will be conducting a DUI/Driver's License Checkpoint on June 20th, 2014, at an undisclosed location within the city limits between the hours of 7:00 p.m. to 3:00 a.m.

The deterrent effect of DUI checkpoints is a proven resource in reducing the number of persons killed and injured in alcohol or drug involved crashes. Research shows that crashes involving an impaired driver can be reduced by up to 20 percent when well-publicized DUI checkpoints and proactive DUI patrols are conducted routinely.

In California, this deadly crime led to 774 deaths because someone failed to designate a sober driver. Nationally, the latest data shows nearly 10,000 were killed by an impaired driving. "Driving while under the influence of an alcoholic beverage or drugs is a choice. When someone chooses to drive under the influence, they put themselves and the entire community at risk," said Sgt. Bill Davis.

Officers will be looking for signs of alcohol and/or drug impairment with officers checking drivers for proper licensing delaying motorists only momentarily. When possible, specially trained officers will be available to evaluate those suspected of drug-impaired driving.

Recent statistics reveal that 30 percent of drivers in fatal crashes had one or more drugs in their systems. A study of active drivers showed more tested positive for drugs that may impair driving (14 percent) than did for alcohol (7.3 percent). Of the drugs, marijuana was most prevalent, at 7.4 percent, slightly more than alcohol.

According to the National Highway Traffic Safety Administration (NHTSA), checkpoints have provided the most effective documented results of any of the DUI enforcement strategies, while also yielding

considerable cost savings of \$6 for every \$1 spent. Nearly 90 percent of California drivers approve of DUI checkpoints.

DUI Checkpoints are placed in locations based on collision statistics and frequency of DUI arrests affording the greatest opportunity for achieving drunk and drugged driving deterrence. Locations are chosen with safety considerations for the officers and the public.

Drivers caught driving impaired can expect the impact of a DUI arrest to include jail time, fines, fees, DUI classes, other expenses that can exceed \$10,000 not to mention the embarrassment when friends and family find out.

*Funding for this operation is provided by a grant from the California Office of Traffic Safety, through the National Highway Traffic Safety Administration.*

# # #

[More News »](#)

## News

### Do You Want to Escape the Heat?

#### A Cool Center is where you can go!

**Posted Date:** 6/16/2014 3:30 PM

Community Action Partnership of Riverside County is coordinating Cool Centers to provide drop-in sites for vulnerable individuals, seniors, the disabled, and others in need of temporary relief from the heat. Cool Centers will open to the public, in affected areas, when the Riverside County Department of Public Health issues a "Heat Warning". Watch or listen for the "Heat Warning" on your television, radio, and local newspaper.

#### Keep Cool! Protect Your Health When It's Hot!

- Drink plenty of water. Avoid alcohol and caffeine.
- Wear a wide-brimmed hat, or use an umbrella for shade.
- Wear lightweight, light-colored, loose clothing.
- Slow down—rest in the shade or a cool place when possible.
- Never leave a child, elderly, disabled person, or animal alone in a vehicle.
- Check on your friends and neighbors who are elderly or have medical conditions or at higher risk for problems when it is very hot.
- If you do not have an air conditioner, use a fan, make sure your windows are open and visit a cool center.
- Take a cool shower or bath.
- When it is hotter than 90° visit a friend that has air conditioning in their home or some place cool like a mall, a library or a senior center.
- Turn on your air conditioner

*You are also at risk if you have certain medical conditions, take medication for high blood pressure, have a mental health condition, have been using drugs or alcohol, or have had a previous heat-related illness.*

**For Cool Center locations, hours and tips on how to protect yourself from heat related illnesses, please call:**

#### Summer Energy Crisis Hotline

1 (888) 636-8676

TTY (951) 955-5126 Monday-Friday 8 a.m. - 5 p.m.

Or call 2-1-1 24 hours/day

[www.capriverside.org](http://www.capriverside.org)

[View Cool Center Flyer \(English\)](#)

[View Cool Center Flyer \(Spanish\)](#)

[More News »](#)

## News

### 91 Project Construction Activities - June 17 to June 20th

Posted Date: 6/15/2014 2:45 PM



As part of the Riverside County Transportation Commission's 91 Project in Corona and Riverside, construction crews will drill for soil samples and conduct maintenance activities on the 91 and I-15. Noise can be expected with these activities. For the safety of construction workers and the motoring public, closures will be needed. activities. Following are details for work taking place **Tuesday night, June 17 to Friday morning, June 20, 2014.**

**NOTE:** Information contained in the Construction Alert is subject to change without notice, based on weather, field conditions or other operational factors.

***Please Note: An Open House will be held at the Corona Public Library June 19, 2014, from 6 to 8 p.m. The Open House will provide information about upcoming full construction activities that are expected to start in early July 2014.***

**Lane Closures: \*No detour necessary as lanes will remain open.\***

- **Westbound 91 between Serfas Club Drive and the Orange/Riverside County line - Far two right lanes:** Tues., June 17 - 9 p.m. to 4 a.m.
- **Eastbound 91 from the 71 to Lincoln Avenue - Far right lane:** Wed., June 18 - 10 p.m. to 5 a.m.
- **Westbound and Eastbound 91 rolling closure between Pierce Street and the Orange/Riverside County Line - Carpool lane; begin in westbound direction and switch to eastbound direction:** Thurs., June 19 - 9 p.m. to 5 a.m.

**Safety is RCTC's highest priority, so please:**

- Slow down and watch for workers and heavy equipment
- Allow extra time to get to work, school or appointments
- Tell friends or customers about construction activity
- Be extra careful when driving at night and in rainy weather
- Avoid mobile phone use or other distractions when driving through this area
- Watch for lane and ramp closures, use alternate routes and follow detours
- Obey the "Move Over" Law, which requires you to move to lanes away from any construction work, when it's safe to do so
- Remember that this is a short-term inconvenience for long-term mobility benefits

For more information about the 91 Project or to sign up for alerts, please visit the project website at: [www.sr91project.info](http://www.sr91project.info)

###

[More News »](#)



## News

### Sewer Line Project and Traffic Impacts

**Posted Date:** 6/11/2014 1:00 PM

The Contractor for JCSD will be working at the intersection of Sumner Avenue at Bellegrave Avenue to continue the construction of the sewer line as follows:

- Construction dates: **6/16/14 through 6/20/14**
- Work Hours: 7:00 a.m. to 5:00 p.m.
- Intersection will remain **closed** during construction and after hours
- Appropriate detour signs will be implemented
- Residents are encouraged to use alternate route



Motorists are encouraged to take alternate routes and allow extra drive time for any activities in the immediate area. Residents are encouraged to obey all traffic signs, vehicle code laws and speed limits especially in a construction zone.

If you have any questions related to this construction project or have any traffic concerns, please feel free to contact the Ruben Castaneda, City of Eastvale Public Works Department at (951) 703-4470.


[More News »](#)

# News

## Eastvale Gateway Lane Closure Schedule for Limonite Ave.

**Posted Date:** 6/10/2014 10:15 AM

The Eastvale Gateway Shopping Center will be making repairs to their main entrance at Limonite Avenue. In order to make the necessary repairs to the driveway entrance, the following lane closures will take place:



**INTERNATIONAL  
PAVING  
SERVICES, INC.**

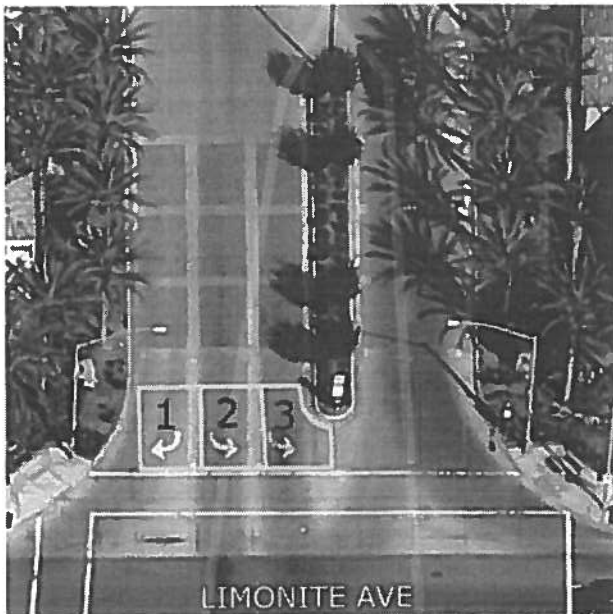
P.O. Box 10458, San Bernardino, CA 92423-0458 - (909) 794-2101 • 1 (800) 826-4163 - Fax: (909) 794-7098

PAVING      GRADING      CONCRETE  
SEAL COATING      STRIPING      ADA COMPLIANCE

**IPS WORK SCOPE-EASTVALE GATEWAY MAIN ENTRY OFF LIMONITE**

### MAIN ENTRY LANE CLOSURE SCHEDULE

PHASE 1-JUNE 12-14  
PHASE 2-JUNE 17-19  
PHASE 3-JUNE 26-28



LIMONITE AVE

**A MINIMUM OF ONE LANE TO BE KEPT OPEN AT ALL TIMES.  
EACH PHASE WILL REQUIRE LANE TO BE CLOSED UP TO TWO  
DAYS FOR CONCRETE CURE TIME.**

A minimum of one lane will be kept open at all times. Each phase will require the lane to be closed for up to two days to allow the concrete to cure. [Click here to view map and schedule.](#)

As always, motorists are encouraged to take alternate routes and allow extra drive time for any activities in the immediate area. Residents are encouraged to obey all traffic signs, vehicle code laws and speed limits especially in a construction zone.

If you have any questions related to this construction project please contact, Patrick Young, Property Manager at (909) 949-6787.

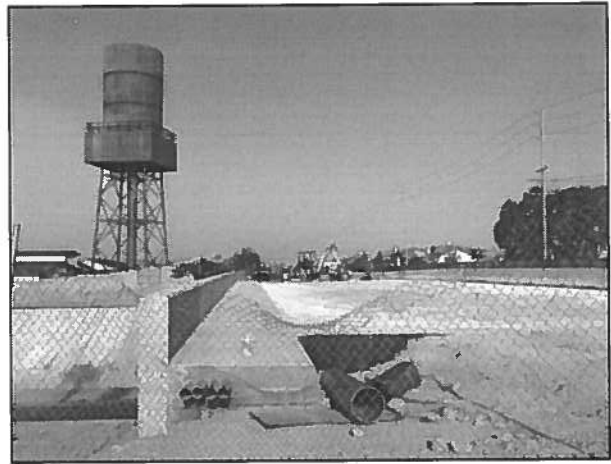
[More News »](#)

## News

### Schleisman Bridge Widening to Resume

**Posted Date:** 6/9/2014 3:45 PM

The Schleisman Bridge widening work will resume again this **Wednesday, June 11, 2014** and will continue until **Mid-July 2014**. Please be advised: traffic delays should be expected during construction hours 8:30 a.m. and 3:30 p.m. The remainder of the work consists of the following:



- Completion of Roadway Improvements from Gypsum Creek Drive to west of the Schleisman Bridge
  - Final pavement cap
  - Re-Striping
- Completion of sidewalk connectivity from west of the Schleisman Bridge to Gypsum Creek Drive
- Landscaping of center median between Hellman Avenue and the Schleisman Bridge

As always, motorists are encouraged to take alternate routes and allow extra drive time for any activities in the immediate area. Residents are encouraged to obey all traffic signs, vehicle code laws and speed limits especially in a construction zone.

If you have any questions related to this construction project or have any traffic concerns, please feel free to contact the City of Eastvale's Public Works Department at (951) 703-4470.

###

[More News »](#)

## News

### FIREWORKS PROHIBITED IN RIVERSIDE COUNTY

**Posted Date:** 6/4/2014 11:45 AM

The City of Eastvale would like to remind everyone that it is illegal to possess, discharge or sell fireworks. Residents should adhere to the “no fireworks” law throughout the City of Eastvale pursuant to **Eastvale Municipal Code Sec. 8.22.030**.

The illegal use of fireworks can cause serious injuries to people and significant property damage. Dry conditions, due to lack of rainfall have created further potential for fires caused by illegal fireworks. Please leave the fireworks to the professionals!

Residents and visitors are encouraged to attend the professional fireworks display at the Annual Eastvale Picnic in the Park on **Saturday, June 28th at 9:00 p.m.** at the new Eastvale Community Park: 12750 Citrus Street, Eastvale. Admission is **FREE**.

The City of Eastvale appreciates your understanding and cooperation with the no fireworks law and reminds everyone to be safe this 4th of July season!

[More News »](#)

## News

### NOTICE OF CONSTRUCTION ACTIVITIES TO THE BUSINESSES AND RESIDENTS ALONG HAMNER AVE.

**Posted Date:** 5/15/2014 11:45 AM

#### THE PROJECT:

The Chino Basin Desalter Authority is constructing a 30" inch diameter pipeline to deliver drinking water to the cities of Eastvale, Ontario and Norco, as well as Western Municipal Water District and Jurupa Community Services District. The pipeline project is part of an overall expansion of the Chino Basin Desalter's water treatment and delivery system, when completed, will provide an additional 10 million gallons per day of drinking water to the local area.

#### WHAT TO EXPECT:

The construction contract has been awarded to Vido Artukovich & Son, Inc. /Vidmar Inc. a JV. The project work will start on Mississippi Drive and will continue northbound along Hamner Ave to Riverside Dr. in phased construction with limited work areas. The estimated start date for project work in your area will be **mid-May 2014 with working hours of 8:30 AM to 3:30 PM Monday through Friday**. Traffic lanes will be reduced in many areas to one lane in each direction during work hours, which will cause driver inconvenience due to transitions and speed reductions. ***Please use alternate routes to avoid congestion and delays whenever possible.***

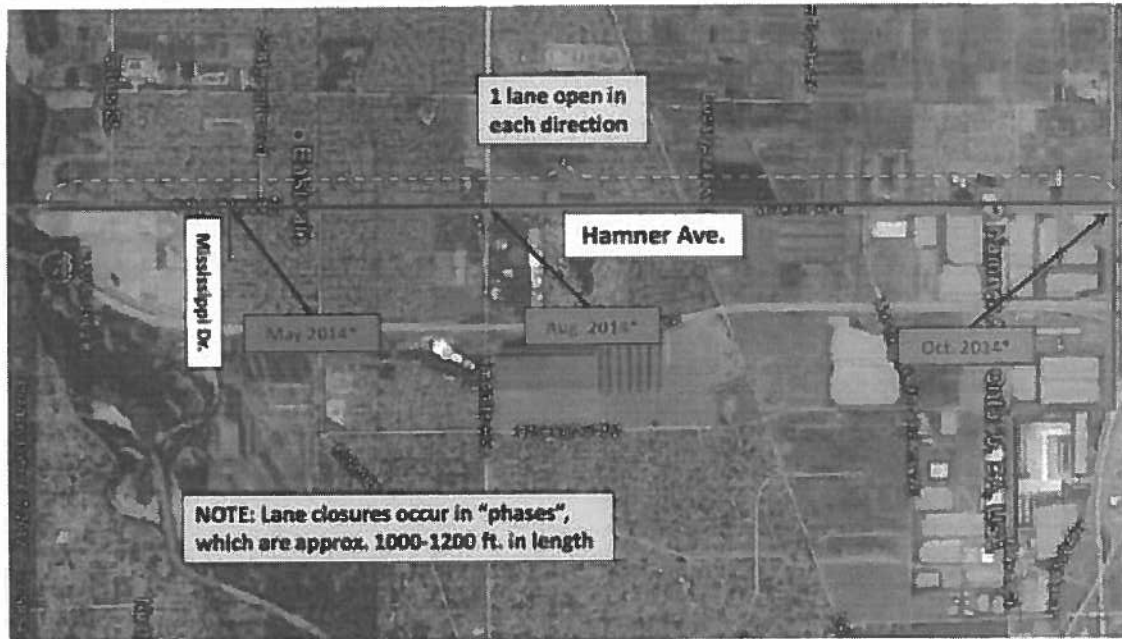
#### QUESTIONS AND CONCERNS:

Should you have any questions or concerns, Please contact: Vido Artukovich & Son, Inc. /Vidmar Inc. 626-444-4286 or the City of Eastvale – Mr. Ruben Castaneda 951-703-4470

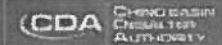
We apologize for any inconvenience and thank you for your patience and cooperation.

[Click here to view project announcement.](#)

## Construction Facts & Traffic Control



\*Dates are estimates only, subject to change due to field and weather conditions



[More News »](#)

## News

### Gas Leak on Hamner Avenue

Posted Date: 6/11/2014 3:15 PM

**\*\*URGENT NOTICE\*\***

We have just been informed that there is a high pressure gas line leak on Hamner Ave. They are doing a full closure of Hamner Ave. between Mississippi Street and 68th Street. Southern California Gas Company representatives are on scene to assess the damage and commence repairs. **Hamner Ave. will be CLOSED for approximately four (4) hours** in order to safely make repairs.

Schleisman Road from Scholar Way to Hamner Avenue is also **CLOSED** for approximately four hours.

According to the Southern California Gas Company, there are no scheduled evacuations and no immediate danger posed.

**\*\*Please use alternate routes to avoid the area and traffic delays.\*\***

We will keep you updated as additional details become available.

[More News »](#)



## News

### 91 Project Construction Activities - June 9 to June 11th

**Posted Date:** 6/9/2014 9:45 AM



As part of the Riverside County Transportation Commission's 91 Project in Corona and Riverside, construction crews will drill for soil samples and conduct maintenance activities on the 91 and I-15. Noise can be expected with these activities. For the safety of construction workers and the motoring public, closures will be needed. activities. Following are details for work taking place **Monday night, June 9 to Wednesday morning, June 11, 2014.**

**NOTE:** Information contained in the Construction Alert is subject to change without notice, based on weather, field conditions or other operational factors.

#### Ramp Closures:

- **Eastbound 91 Main Street On-Ramp:** Tues., June 10 - 10 p.m. to 5 a.m. - Use eastbound 91 Lincoln Avenue on-ramp.
- **Southbound 15 East Ontario Avenue Off-Ramp:** Tues., June 10 - 10 p.m. to 5 a.m. - Use southbound 15 Magnolia Avenue off-ramp.

#### Lane Closures: \*No detour necessary as lanes will remain open.\*

- **Westbound 91 between Serfas Club Drive and the 71 - Far right lane:** Mon., June 9 - 9 p.m. to 4 a.m.
- **Westbound 91 between McKinley Street and east of the 15 - Far right lane:** Mon., June 9 - 9 p.m. to 4 a.m.
- **Westbound 91 from east of Serfas Club Drive to the 71 - Carpool lane:** Mon., June 9 - 9 p.m. to 4 a.m.
- **Eastbound 91 from east of the 15 and McKinley Street - Carpool lane:** Mon., June 9 - 10 p.m. to 5 a.m.
- **Eastbound 91 near Maple Street - Far right lane:** Tues., June 10 - 10 p.m. to 5 a.m.
- **Eastbound 91 from Main Street to the 15 - Far right lane:** Tues., June 10 - 10 p.m. to 5 a.m.

#### Safety is RCTC's highest priority, so please:

- Slow down and watch for workers and heavy equipment
- Allow extra time to get to work, school or appointments
- Tell friends or customers about construction activity
- Be extra careful when driving at night and in rainy weather

- Avoid mobile phone use or other distractions when driving through this area
- Watch for lane and ramp closures, use alternate routes and follow detours
- Obey the "Move Over" Law, which requires you to move to lanes away from any construction work, when it's safe to do so
- Remember that this is a short-term inconvenience for long-term mobility benefits

For more information about the 91 Project or to sign up for alerts, please visit the project website at: [www.sr91project.info](http://www.sr91project.info)

# # #

[More News »](#)

## News

### LAW ENFORCEMENT TORCH RUN FOR SPECIAL OLYMPICS COMING THROUGH EASTVALE ON JUNE 2nd

**Posted Date:** 6/2/2014 2:00 PM

**EASTVALE, CA (June 2, 2014)** - Members of the public are invited and encouraged to attend the upcoming Law Enforcement Torch Run (LETR) for Special Olympics on Monday, June 2nd. Officers of the Riverside County Sheriff's Department will accept the torch, known as the "Flame of Hope," at approximately 4:30 p.m. from Officers of the Ontario Police Department at the Riverside County line on Riverside Drive and Hamner Avenue.

Officers will run the torch through the City of Eastvale by heading south on Hamner Avenue. The torch will cross the Hamner Bridge into the City of Norco and continue south on Hamner Avenue. The torch will be handed off to Officers of the Corona Police Department at Hidden Valley Parkway and continue south on Main Street. Spectators are welcome along the route. Residents are encouraged to allow extra time for any activities in the immediate area or may wish to use an alternate route to avoid any potential traffic delays.

The 2013 Southern California Law Enforcement Torch Run involved more than 450 officers who proudly carried the Special Olympics Torch more than 1,500 miles and through more than 175 communities. The City of Eastvale is proud to share in this tradition and welcomes the LETR to our community.

According to the Special Olympics website, the Torch Run has grown worldwide to include more than 125 runs in 48 nations. Since its inception 33 years ago, more than 142,000 law enforcement officers have raised \$461 million for the Special Olympics movement worldwide. More than 2,000 officers also raised \$1.3 million in 2013 through various fundraising efforts such as Tip-A-Cop® dinners and more. The Torch Run has become the largest grassroots fundraiser and public awareness event for Special Olympics.

For more information on the Law Enforcement Torch Run (LETR) for Special Olympics, please visit their website: [www.sosc.org](http://www.sosc.org)



[Click here to view press release.](#)

[More News »](#)

## News

### 91 Project Construction Activities - June 3 to June 4th

**Posted Date:** 6/1/2014 10:00 PM



As part of the Riverside County Transportation Commission's 91 Project in Corona and Riverside, construction crews will drill for soil samples and conduct maintenance activities on the 91 and I-15. Noise can be expected with these activities. For the safety of construction workers and the motoring public, closures will be needed. Following are details for work taking place Tuesday night, **June 3, 2014 to Wednesday morning, June 4, 2014.**

NOTE: Information contained in the Construction Alert is subject to change without notice, based on weather, field conditions or other operational factors.

#### **Lane Closures: No detour necessary as lanes will remain open.**

- Westbound 91 from east of I-15 to east of Main Street - Carpool lane: Tues., Tues., June 3 - 9 p.m. to 4 a.m.

#### **Safety is RCTC's highest priority, so please:**

- Slow down and watch for workers and heavy equipment
- Allow extra time to get to work, school or appointments
- Tell friends or customers about construction activity
- Be extra careful when driving at night and in rainy weather
- Avoid mobile phone use or other distractions when driving through this area
- Watch for lane and ramp closures, use alternate routes and follow detours
- Obey the "Move Over" Law, which requires you to move to lanes away from any construction work, when it's safe to do so
- Remember that this is a short-term inconvenience for long-term mobility benefits

For more information about the 91 Project or to sign up for alerts, please visit the project website at: [www.sr91project.info](http://www.sr91project.info)

###

[More News »](#)

## News

### Speed / Safety Enforcement

**Posted Date:** 5/30/2014 3:00 PM

**Press Release:** Speed / Safety Enforcement

**Agency:** Eastvale Police

**Station Area:** Jurupa Valley

**Written Date:** 05-29-14 Time: 8:00 P.M.

**Incident Date:** 05-29-14 Time: 4:00 PM to 6:00 PM

**Incident Location:** Limonite Ave. and Cedar Creek Rd., Eastvale

**Reporting Officer:** Sergeant Conrad Cease

**File Number(s):** Numerous

#### Details:

On Thursday, May 29, 2014, the Eastvale Police Department's Traffic Division conducted a speed enforcement operation as part of its commitment to public safety. This operation is one of many that will be conducted throughout the year.

This operation was conducted near the intersection of Limonite Ave. and Cedar Creek Rd., in response to ongoing citizen concerns of speeding and traffic collisions in the area. The purpose of this operation is to slow motorists driving above the posted speed limit of 45 M.P.H. and bring the public awareness to the dangers of driving at speeds greater than the posted speed limit. The operation was conducted from 4:00 PM to 6:00 PM.

#### Operation Results:

- 32 citations issued for speeding above the posted speed limit.
- 2 Vehicles were towed for drivers driving on suspended or without a driver's license.

# # #

#### Stay Connected

The City of Eastvale news, announcements, events and more are available through our website, e-notification system and social media. Please connect with us:

- Sign up for e-notifications: [www.eastvalecity.org/index.aspx?page=18](http://www.eastvalecity.org/index.aspx?page=18)
- Facebook: [www.facebook.com/CityofEastvaleCA](http://www.facebook.com/CityofEastvaleCA)
- Twitter: @CityofEastvaleCA
- Instagram: @thecityofeastvaleca
- LinkedIn: [www.linkedin.com/company/city-of-eastvale-ca](http://www.linkedin.com/company/city-of-eastvale-ca)
- City of Eastvale website: [www.eastvaleca.gov](http://www.eastvaleca.gov)

[More News »](#)

## News

### Hit and Run Traffic Collision - Public's Help Needed!

**Posted Date:** 5/28/2014 4:45 PM

**Press Release:** Hit and Run Traffic Collision

**Agency:** Eastvale Police Department

**Station Area:** Jurupa Valley

**Written Date:** May 23, 2014 **Time:** 09:30 p.m.

**Incident Date:** April 25, 2014 **Time:** 12:12 a.m.

**Incident Location:** Limonite Avenue / Hamner Avenue, Eastvale

**Reporting Officer:** Deputy Blair

**File Number(s):** EV141150002

#### Details:

On Thursday, April 25, 2014 at 12:12 a.m., Eastvale Police Officers responded to a reported injury traffic collision at the intersection of Limonite Ave. and Hamner Ave., in the City of Eastvale. During the preliminary investigation it was revealed that an unknown make or model black sedan, traveling westbound in the eastbound lanes of Limonite Ave., failed to stop for a red traffic signal light. As a result, the black sedan collided into a bicyclist, who was traveling southbound on Hamner Ave.

After the collision, the black sedan continued westbound on Limonite Ave. in the eastbound lanes of traffic and was last seen turning southbound on Scholar Way. Although officers arrived within minutes of receiving the call, neither the black sedan, nor the driver of the sedan, was located.

Witnesses on scene described the suspect vehicle as a black, four door sedan. The suspect vehicle fled the scene of the traffic collision westbound on Limonite Ave. and made a left turn (southbound) onto Scholar Way.

As a result of the collision, the bicyclist ultimately succumbed to his injuries and was pronounced deceased at Kaiser Hospital of Ontario.

The Eastvale Police Department is seeking help from the public in identifying the suspect and suspect vehicle of this traffic collision. In particular, the Eastvale Police Department is seeking the help of a

**Eastvale Police Department**  
**PUBLIC'S HELP NEEDED** Fatal Hit and Run Traffic Collision

**VICTIM: Troy Davids**

On Thursday, April 25, 2014 at 12:12 AM, Eastvale Police Officers responded to a reported injury traffic collision at the intersection of Limonite Ave. and Hamner Ave., in the City of Eastvale. During the preliminary investigation it was revealed that an unknown make or model black sedan, traveling westbound in the eastbound lanes of Limonite Ave., failed to stop for a red traffic signal light. As a result, the black sedan collided into a bicyclist, who was traveling southbound on Hamner Ave.

After the collision, the black sedan continued westbound on Limonite Ave., in the eastbound lanes of traffic and was last seen turning southbound on Scholar Way. Although officers arrived within minutes of receiving the call, neither the black sedan, nor the driver of the sedan, were located. Witnesses on scene described the suspect vehicle as a black, four door sedan.

As a result of the collision, the bicyclist ultimately succumbed to his injuries and was pronounced deceased at Kaiser Hospital of Ontario.

The Eastvale Police Department is seeking help from the public in identifying the suspect and suspect vehicle of this traffic collision. In particular, the Eastvale Police Department is seeking the help of a good Samaritan, who was driving a tan Chevrolet Suburban, that may have seen the suspect vehicle and driver as it fled the scene of the traffic collision.

Anyone with information on this case is encouraged to call Deputy Cuadra at the Jurupa Valley Sheriff's Station at (951) 955-2662.

Approved by L. Mike Yano

good Samaritan, who was driving a tan Chevrolet Suburban, that may have seen the suspect vehicle and driver as it fled the scene of the traffic collision.

Anyone with information on this case is encouraged to call Deputy Cuadra at the Jurupa Valley Sheriff's Station at (951) 955-2662.

**[Click here to view special announcement flyer.](#)**

# # #

[More News »](#)

## News

### 91 Project Construction Activities - May 27 to May 30, 2014

**Posted Date:** 5/26/2014 2:15 AM



As part of the Riverside County Transportation Commission's 91 Project in Corona and Riverside, construction crews will drill for soil samples and conduct maintenance activities on the 91 and I-15. Noise can be expected with these activities. For the safety of construction workers and the motoring public, closures will be needed. Following are details for work taking place Tuesday night, **May 27 to Friday morning, May 30, 2014**. In observance of

Memorial Day, no planned closures are scheduled on Monday, May 26, 2014.

NOTE: Information contained in the Construction Alert is subject to change without notice, based on weather, field conditions or other operational factors.

#### Connector Closures:

- **Eastbound 91 to Northbound and Southbound 15:** Wed., May 28 - 11 p.m. to 5 a.m. Continue on eastbound 91 and exit McKinley Street. Take the westbound 91 McKinley Street on-ramp to the northbound and southbound 15 connectors.

#### Lane Closures: No detour necessary as lanes will remain open.

- Eastbound 91 between Green River Road and the 71 - Lane closest to shoulder: Tues., May 27 - 10 p.m. to 5 a.m.
- Westbound 91 between Coal Canyon and Orange/Riverside County Line - Lane closest to shoulder: Tues., May 27 - 9 p.m. to 4 a.m.
- Eastbound 91 from east of 6th Street to Lincoln Avenue - Carpool and fast lane: Wed., May 28 - 10 p.m. to 5 a.m.
- Eastbound 91 between Main Street and the 15 - Carpool and fast lane: Wed., May 28 - 10 p.m. to 5 a.m.
- Westbound 91 from east of the 15 to East Grand Boulevard - Carpool and fast lane: Wed., May 28 - 9 p.m. to 4 a.m.
- Westbound 91 from west of Lincoln Avenue to Serfas Club Drive - Carpool and fast lane: Wed., May 28 - 9 p.m. to 4 a.m.
- Westbound and eastbound 91 carpool lane rolling closures between Pierce Street and the Orange/Riverside County Line: Thurs., May 29 - 9 p.m. to 5 a.m.

#### Local Street Closures: NONE

**Safety is RCTC's highest priority, so please:**



- Slow down and watch for workers and heavy equipment
- Allow extra time to get to work, school or appointments
- Tell friends or customers about construction activity
- Be extra careful when driving at night and in rainy weather
- Avoid mobile phone use or other distractions when driving through this area
- Watch for lane and ramp closures, use alternate routes and follow detours
- Obey the "Move Over" Law, which requires you to move to lanes away from any construction work, when it's safe to do so
- Remember that this is a short-term inconvenience for long-term mobility benefits

For more information about the 91 Project or to sign up for alerts, please visit the project website at: [www.sr91project.info](http://www.sr91project.info)

# # #

[More News »](#)



**City of Eastvale**  
**Public Safety Commission Meeting Agenda**  
**Staff Report**

---

**MEETING DATE: June 24, 2014**

---

**10. CITY STAFF REPORT**



# City of Eastvale

## Public Safety Commission Meeting Agenda

### Staff Report

---

**MEETING DATE: June 24, 2014**

---

#### ***11. COMMISSION COMMUNICATIONS***



**City of Eastvale**  
**Public Safety Commission Meeting Agenda**  
**Staff Report**

---

**MEETING DATE: June 24, 2014**

---

**12. *ADJOURNMENT***