



CITY OF EASTVALE

PUBLIC SAFETY COMMISSION MEETING AGENDA

**Eastvale City Hall Council Chambers
12363 Limonite Avenue, Suite 900, Eastvale, CA 91752
Tuesday, December 3, 2019
Special Meeting: 6:00 P.M.**

City Councilmembers

Christian Dinco, Chair
Rob Gracia, Vice-Chair
Kenneth Fitch, Commissioner
Yvonne Varela, Commissioner
Joe Ward, Commissioner

This Agenda contains a brief general description of each item to be considered. Except as otherwise provided by law, no action or direction shall be taken on any item not appearing on the following Agenda. Unless legally privileged, all supporting documents, including staff reports, and any writings or documents provided to a majority of the City Council after the posting of this agenda are available for review at Eastvale City Hall, 12363 Limonite Avenue, Eastvale, CA 91752 or you may contact the City Clerk's Office, at (951) 361-0900 Monday through Thursday from 7:30 a.m. to 5:30 p.m. and available online at www.eastvaleca.gov.

If you wish to speak before the City Council, please complete a Speaker Form identifying which item(s) you wish to address. Please return the completed form to the City Clerk prior to being heard before the Council. Speakers Forms are available at the front table of the entryway to the Council Chambers



In compliance with the Americans with Disabilities Act, if you need special assistance to participate in this meeting, you should contact the City Clerk's Office at (951) 361-0900.

Regular meetings are recorded and made available on the City's website at www.eastvaleca.gov. Meeting recordings are uploaded to the City's website within 24 hours (unless otherwise noted) after the completion of the meeting.

- 1. CALL TO ORDER**
- 2. ROLL CALL**
- 3. PLEDGE OF ALLEGIANCE**
- 4. PRESENTATIONS/ANNOUNCEMENTS**
 - 4.1** Monthly Community Enhancement and Safety Update
 - 4.2** Monthly Fire Department Update
 - 4.3** Monthly Police Department Update

5. ADDITIONS/REVISIONS

The Public Safety Commission may only add an item to the Agenda after making a finding that there is a need to take immediate action on the item and that the item came to the attention of the agency subsequent to the posting of the agenda. An action adding an item to the agenda requires 2/3 vote of the Commission. If there is less than 2/3 of the Council members present, adding an item to the agenda requires a unanimous vote. Added items will be placed for discussion at the end of each section unless otherwise noted.

6. CONSENT CALENDAR

Consent Calendar items are normally enacted in one motion. The Chair or Commission may remove a Consent Calendar item for separate action. If a member of the public would like to speak on a Consent Calendar item, please complete a blue "Public Comment Form" and submit to the City Clerk prior to the item.

6.1 Public Safety Commission Minutes

Submitted by: Stephanie Vasquez, Deputy City Clerk

RECOMMENDED ACTION(S):

Approve the minutes from the regular meeting held on October 22, 2019.

6.2 Communications Monthly Summary

Submitted by: Bobbi Hawkins, Communications Specialist

RECOMMENDED ACTION(S):

Receive and file the Communications Monthly Summary.

6.3 Eastvale Connection

Submitted by: Bobbi Hawkins, Communications Specialist

RECOMMENDED ACTION(S):

Receive and file the Eastvale Connection.

6.4 Public Works Department Update

Submitted by: Gina Gibson-Williams, Community Development Director

RECOMMENDED ACTION(S):

Receive and file the Public Works Department Update.

6.5 Planning Department Update

Submitted by: Gina Gibson-Williams, Community Development Director

RECOMMENDED ACTION(S):

Receive and file the Planning Department Update.

6.6 Eastvale Crime Statistics – September

Submitted by: Eva Terekhova, Emergency Management Specialist

RECOMMENDED ACTION(S):

Receive and file the Eastvale Crime Statistics for September.

7. Commission Business Items

7.1 Automatic License Plate Reader (ALPR) Update

Submitted by: Stephanie Vasquez, Deputy City Clerk

RECOMMENDED ACTION(S):

Receive and file the Automatic License Plate Reader Update

8. PUBLIC COMMENT

Any member of the public may address the Council on items within the Council’s subject matter jurisdiction, but which are not listed on this agenda during PUBLIC COMMENTS. However, no action may be taken on matters that are not part of the posted agenda. We request comments made on the agenda be made at the time the item is considered and that comments be limited to three minutes per person with a maximum of six minutes (time may be donated by one person). Please address your comments to the Council and do not engaged in dialogue with individual Councilmembers, City staff, or members of the audience. Blue speaker forms are available at the front table to the entrance of Council Chambers.

9. CITY STAFF REPORT

10. COMMISSION COMMUNICATIONS

ADJOURNMENT – The next regular meeting of the Eastvale Public Safety Commission is scheduled for Tuesday, January 28, 2020, at 6:00 p.m. at Eastvale City Hall Council Chambers, 12363 Limonite Avenue, Suite 900, Eastvale, CA 91752.

AFFIDAVIT OF POSTING

I hereby certify under penalty of perjury under the laws of the State of California, that the foregoing Agenda was posted at the following locations: City Hall, 12363 Limonite Avenue, Suite 910 and website of the City of Eastvale (www.eastvaleca.gov), not less than 72 hours prior to the meeting. Dated this 26th day of November 2019.

Stephanie Vasquez
Deputy City Clerk

MINUTES CITY OF EASTVALE

Public Safety Commission Regular Meeting
Tuesday, October 22, 2019
6:00 P.M.

Eastvale City Hall
12363 Limonite Avenue #910
Eastvale, CA 91752

1. CALL TO ORDER

A regular meeting of the Eastvale Public Safety Commission was called to order on October 22, 2019, at 6:04 p.m. by Chair Dinco.

2. ROLL CALL/INVOCATION/PLEDGE OF ALLEGIANCE

Present: Commissioner Fitch, Vice-Chair Gracia, and Chair Dinco

Absent: Commissioners Varela and Ward

City Staff

Present: City Manager Jones and Deputy City Clerk Vasquez were present at Roll Call. Other staff members were present and responded to questions.

PLEDGE OF ALLEGIANCE

Commissioner Fitch led the assembly in the Pledge of Allegiance to our Flag.

3. PRESENTATIONS/ANNOUNCEMENTS

3.1 Monthly Community Enhancement and Safety Update

Community Enhancement Manager Terfehr provided an update on the department and noted statistics since the last Commission meeting and answered related questions.

3.2 Monthly Fire Department Update

Division Chief Veik provided a summary of calls for service and statistics and answered related questions.

3.3 Monthly Police Department Update

Sergeant Gutierrez provided a summary of calls for service and statistics and answered related questions.

Deputy City Clerk Vasquez stated that a member of the public requested to speak on Item 4.4.

4. CONSENT CALENDAR

On motion of Vice-Chair Gracia and second by Commissioner Fitch, the Public Safety Commission voted unanimously to approve Consent Calendar Items Nos. 4.1 – 4.3 and 4.5 – 4.6.

4.1 Public Safety Commission Minutes

Approve the minutes from the regular meeting held on September 24, 2019.

4.2 Communications Monthly Summary

Receive and file the Communications Monthly Summary.

4.3 Eastvale Connection

Receive and file the Eastvale Connection.

4.5 Planning Department Update

Receive and file the Planning Department Update.

4.6 Eastvale Crime Statistics – August 2019

Receive and file the Crime Statistics for August 2019.

ITEM PULLED FROM THE CONSENT CALENDAR

4.4 Public Works Department Update

Chair Dinco opened the public comment period.

Michael O'Connor, Eastvale Resident, suggested adding streetlights on the streets surrounding the Pulte Home project along Limonite.

With no one else desiring to speak on this item, Chair Dinco closed the public comment period.

The Commission discussed the item and staff answered related questions.

On motion of Vice-Chair Gracia and second by Commissioner Fitch, the Public Safety Commission voted unanimously to Receive and file the Public Works Department Update.

5. COMMISSION BUSINESS ITEMS

5.1 Future Agenda Items Discussion

Deputy City Clerk Vasquez summarized the staff report and requested the commissioner's feedback.

Chair Dinco opened the public comment portion of the item. Hearing no response, Chair Dinco closed the public comment portion of the item.

Public Safety Commission discussed, and recommended staff bring back updates on the following:

- CERT Training how it can be utilized
- Emergency call back – Reverse 911
- Crime Map
- Automatic License Plate Reader (ALPR)
 - Statistics
 - Installed locations
 - how we have been utilizing

6. PUBLIC COMMENT

Chair Dinco opened the public comment portion of the meeting.

Keith White, Eastvale Resident, suggested relocating a bus stop on Hamner.

Michael O'Connor, Eastvale Resident, suggested that the Public Safety Commission review the citation process the city currently has for abatement.

Hearing no response, Chair Dinco closed the public comment portion of the meeting.

7. CITY STAFF REPORT

City Manager Jones provided an update on upcoming City events.

8. COMMISSION COMMUNICATIONS

There was no commission communication.

9. FUTURE AGENDA ITEMS

There are no future agenda items.

ADJOURNMENT – Chair Dinco adjourned the meeting at 6:47 p.m. The next regular meeting of the Eastvale Public Safety Commission is scheduled for Tuesday, November 26, 2019, at 6:00 p.m.

Stephanie Vasquez
Deputy City Clerk



AGENDA STAFF REPORT

Public Safety Commission Meeting

Consent Calendar

Agenda Item No. 6.2

December 3, 2019

Communications Monthly Summary

Prepared By: Bobbi Hawkins, Communications Specialist

Recommended Action(s)

Receive and file the Communications Monthly Summary.

Summary

The City of Eastvale's Communications Team works to provide important and valuable information to the community to ensure the community is kept up to date with City occurrences. This information is disseminated through various platforms including the City's website, social media platforms, and coordinated media releases. A monthly summary is provided to capture the avenues of outreach that is taken to inform the residents of Eastvale.

Background

The City of Eastvale provides information to constituents through the City's website, social media and press releases. The City's website, contains information pertaining to City Council and Commission agendas, minutes, community events, crime prevention, safety tips, frequently asked questions and more. By visiting the City's website, residents can also subscribe to Eastvale's e-notification system. E-notification is a free service provided by City Hall, where subscribers can select the types of notifications they would like to receive by email. Links are also available to the City's Facebook, Twitter, Instagram and LinkedIn accounts. Additionally, the City collaborates with our partner agencies to coordinate press releases that are disseminated using the above networks.

Strategic Plan Action – Priority Level: N/A | Target #: N/A | Goal #: N/A

Not Applicable.

Fiscal Impact

None.

Prior City Council/Commission Action

None.

Attachment(s)

Social Media Report of Outreach & Engagement

Social Media Report of Outreach & Engagement



Special Public Safety Commission Meeting - December 3, 2019

Aggregate overview



Aggregate audience

26,047

Total audience of all social accounts



Aggregate engagements

20,226

Total engagements of all social accounts



Aggregate impressions

271,712

Total impressions of all social accounts





December 2019

EASTVALE CONNECTION

Public Meeting Schedule

EASTVALE CITY COUNCIL

- Wed. December 11, 2019 @ 6:30 PM

EASTVALE PLANNING COMMISSION

- Wed. December 18, 2019 @ 6:00 PM

EASTVALE PUBLIC SAFETY COMMISSION

- No Meeting Scheduled

EASTVALE PARKS COMMISSION*

- No Meeting Scheduled



Meetings are held at: Eastvale Council Chambers | 12363 Limonite Ave. Suite 900

*Parks Commission meetings are held at: Eastvale Community Center

City Hall

12363 Limonite Ave. Ste. 910
Eastvale, CA 91752

T: (951) 361-0900

F: (951) 685-1225

E: info@EastvaleCA.gov

For more information visit:
www.EastvaleCA.gov

Stay Connected!



Upcoming Events

December 5, 2019: ECOC Business & Breakfast

December 6, 2019: ECOC Holiday Mixer

December 7, 2019: JCSO Parks & Recreation Present Winter Wonderland

December 14, 2019: JCSO Parks & Recreation Present Breakfast with Santa

December 25, 2019: Happy Holidays Eastvale!



AGENDA STAFF REPORT

Public Safety Commission Meeting

Consent Calendar

Agenda Item No. 6.4

December 3, 2019

Public Works Department Update

Prepared By: Gina Gibson-Williams, Community Development Director

Recommended Action(s)

Receive and File the Public Works Department Update.

Summary

The Public Works Department provides monthly updates on development projects occurring City-wide. The list of updates includes residential and commercial projects, encroachment permits, and capital improvements projects.

Background

Not Applicable

Strategic Plan Action

Not Applicable

Fiscal Impact

Not Applicable

Prior City Council/Commission Action

Not Applicable

Attachment(s)

Public Works Project Status List



EASTVALE PUBLIC WORKS PROJECT UPDATES

PROJECT TYPE:	Residential Development
PROJECT NAME:	KB Home – The Lodge (Tract 32821)
PROJECT NUMBER:	PW10-0124
PROJECT LOCATION:	Northwest corner of Limonite Avenue and Scholar Way
PROJECT DESCRIPTION:	Improvements includes 24 gross acres with 16 residential condominium lots and 2 lettered lots. Improvements include the construction of Scholar Way (half street) across the eastern frontage of the tract map and the associated water, sewer, and drainage improvements.
PROJECT STATUS:	<ul style="list-style-type: none"> • Public improvements 99% completed • Punch list has been issued

PROJECT MAP:





EASTVALE PUBLIC WORKS PROJECT UPDATES

PROJECT TYPE:	Residential Development
PROJECT NAME:	Meritage Home (Tract 31406)
PROJECT NUMBER:	PW10-0140
PROJECT LOCATION:	Southwest corner of Archibald Avenue and River Road
PROJECT DESCRIPTION:	Improvements includes 32.7 gross acres. Widening of Archibald Avenue (west side) and the associated water, sewer, and drainage improvements, as well as the internal public streets and utilities.
PROJECT STATUS:	<ul style="list-style-type: none">• Public improvements 99% completed• Punch list has been issued

PROJECT MAP:



EASTVALE PUBLIC WORKS PROJECT UPDATES

PROJECT TYPE:	Residential Development
PROJECT NAME:	Beazer Homes (Tract 31476)
PROJECT NUMBER:	PW12-0679
PROJECT LOCATION:	Northeast corner of Hellman Avenue and Walters Street
PROJECT DESCRIPTION:	Improvements includes 40.6 gross acres. Improvements include the construction of Hellman Avenue (half street) and the associated water, sewer, and drainage improvements.
PROJECT STATUS:	• Punch list has been issued
PROJECT MAP:	





EASTVALE PUBLIC WORKS PROJECT UPDATES

PROJECT TYPE:	Residential Development
PROJECT NAME:	Stratham Homes (TTM 36775)
PROJECT NUMBER:	PW14-1398
PROJECT LOCATION:	Northwest corner of Limonite Avenue and Harrison Avenue
PROJECT DESCRIPTION:	Improvements includes 43.05 gross acres. Improvements include the construction of Limonite Avenue (half street) and Harrison Avenue (half street) and the associated water, sewer, and drainage improvements.
PROJECT STATUS:	<ul style="list-style-type: none">• Limonite and Harrison street improvements completed• Onsite improvements ongoing

PROJECT MAP:



EASTVALE PUBLIC WORKS PROJECT UPDATES

PROJECT TYPE:	Residential Development
PROJECT NAME:	Prado (TR 35751)
PROJECT LOCATION:	Southeast corner of Schleisman Road and Cucamonga Flood Channel
PROJECT STATUS:	<ul style="list-style-type: none">• Grading operation ongoing• Utility work ongoing• Offsite work ongoing

PROJECT MAP:





EASTVALE PUBLIC WORKS PROJECT UPDATES

PROJECT TYPE: Residential Development

PROJECT NAME: Pulte (TR 28943)

PROJECT LOCATION: Southeast corner of Limonite Avenue and Scholar Avenue

PROJECT STATUS:

- Onsite improvements ongoing
- Offsite improvements ongoing

PROJECT MAP:





EASTVALE PUBLIC WORKS PROJECT UPDATES

PROJECT TYPE:	Commercial Development
PROJECT NAME:	The Merge
PROJECT LOCATION:	Northeast corner of Limonite Avenue and Archibald Avenue
PROJECT DESCRIPTION:	Improvements includes 26 gross acres.
PROJECT STATUS:	<ul style="list-style-type: none">• Grading operation ongoing
PROJECT MAP:	





EASTVALE PUBLIC WORKS PROJECT UPDATES

PROJECT TYPE:	Commercial Development
PROJECT NAME:	Eastvale Marketplace at the Enclave
PROJECT LOCATION:	Southwest corner of Archibald Avenue and Schleisman Road
PROJECT DESCRIPTION:	Improvements includes 1.74 gross acres.
PROJECT STATUS:	<ul style="list-style-type: none">• Public improvements 99% completed• Punch list has been issued

PROJECT MAP:





EASTVALE PUBLIC WORKS PROJECT UPDATES

PROJECT TYPE:	Commercial Development
PROJECT NAME:	The Campus Business Park
PROJECT NUMBER:	PW12-0750
PROJECT LOCATION:	West side of Archibald Avenue south of Limonite Avenue
PROJECT DESCRIPTION:	Improvements includes 53.37 gross acres with 11 development parcels and 6 letter lots.
PROJECT STATUS:	<ul style="list-style-type: none">• Public improvements completed
PROJECT MAP:	





EASTVALE PUBLIC WORKS PROJECT UPDATES

PROJECT TYPE:	Commercial Development
PROJECT NAME:	Chevron Gas Station
PROJECT NUMBER:	PW15-0913
PROJECT LOCATION:	Southwest corner of Hamner Avenue and Riverside Drive
PROJECT DESCRIPTION:	Improvements includes 1.67 gross acres.
PROJECT STATUS:	<ul style="list-style-type: none">• Punch list items have been issued
PROJECT MAP:	

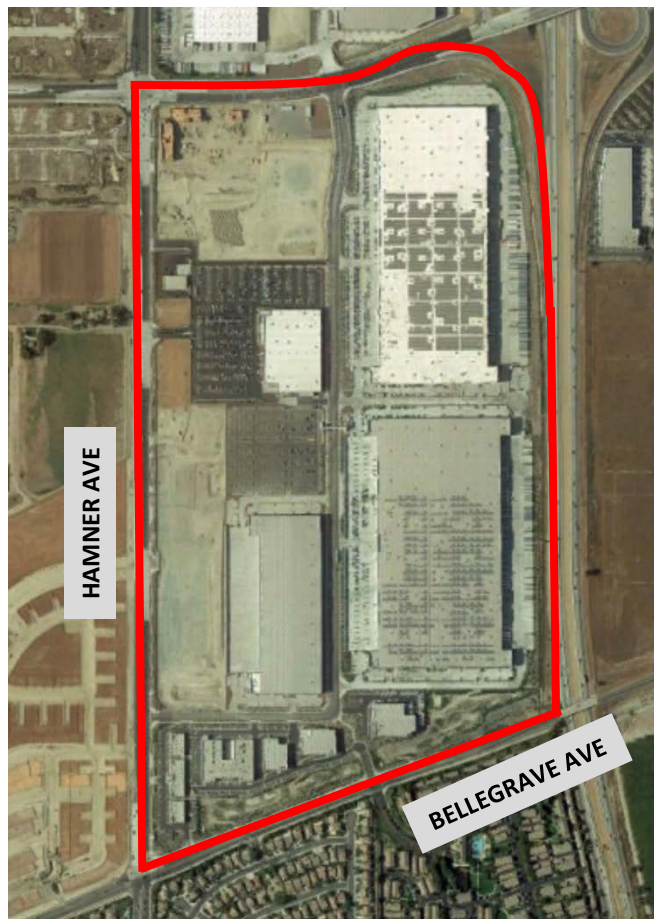




EASTVALE PUBLIC WORKS PROJECT UPDATES

PROJECT TYPE:	Commercial Development
PROJECT NAME:	Goodman Commerce Center
PROJECT NUMBER:	PW11-0271
PROJECT LOCATION:	Northeast corner of Hamner Ave and Bellegrave Ave
PROJECT DESCRIPTION:	Improvements includes 23 gross acres with 5 parcels for business park development, and 2 parcels for water quality basins.
PROJECT STATUS:	•Punch list has been provided

PROJECT MAP:





EASTVALE PUBLIC WORKS PROJECT UPDATES

PROJECT TYPE:	Commercial Development
PROJECT NAME:	The Ranch
PROJECT NUMBER:	PW16-00011
PROJECT LOCATION:	Northeast corner of Kimball Avenue and Hellman Avenue
PROJECT DESCRIPTION:	Improvements include 98 gross acres with 14 parcels including 4 business park lots, 5 commercial/retail lots and 1 parcel for detention basin for storm drain purposes.
PROJECT STATUS:	<ul style="list-style-type: none">• Traffic Signal at Kimball Ave and Hellman Ave is on hold pending Chino's approval• Offsite improvements nearing completion
PROJECT MAP:	





EASTVALE PUBLIC WORKS PROJECT UPDATES

PROJECT TYPE:	Commercial Development
PROJECT NAME:	99 Cent Store
PROJECT NUMBER:	PW13-1601
PROJECT LOCATION:	Northwest corner of Hamner Avenue and Schleisman Road
PROJECT DESCRIPTION:	Improvements include 2.67 gross acres. Improvements include all public improvements across the project frontage along Schleisman Road and Hamner Avenue
PROJECT STATUS:	•Punch list items remaining
PROJECT MAP:	





EASTVALE PUBLIC WORKS PROJECT UPDATES

PROJECT TYPE:	Commercial Development
PROJECT NAME:	Vantage Point Church
PROJECT NUMBER:	PW15-1174
PROJECT LOCATION:	Northeast corner of Archibald Avenue and Prado Basin Park Road
PROJECT STATUS:	• Onsite improvement ongoing
PROJECT MAP:	





EASTVALE PUBLIC WORKS PROJECT UPDATES

PROJECT TYPE: Commercial Development

PROJECT NAME: Hamner Place

PROJECT NUMBER: PW18-10712

PROJECT LOCATION: East of Hamner Avenue and Schleisman Road

PROJECT STATUS: • Rough grading ongoing

PROJECT MAP:





EASTVALE PUBLIC WORKS PROJECT UPDATES

PROJECT TYPE: Capital Improvements Project

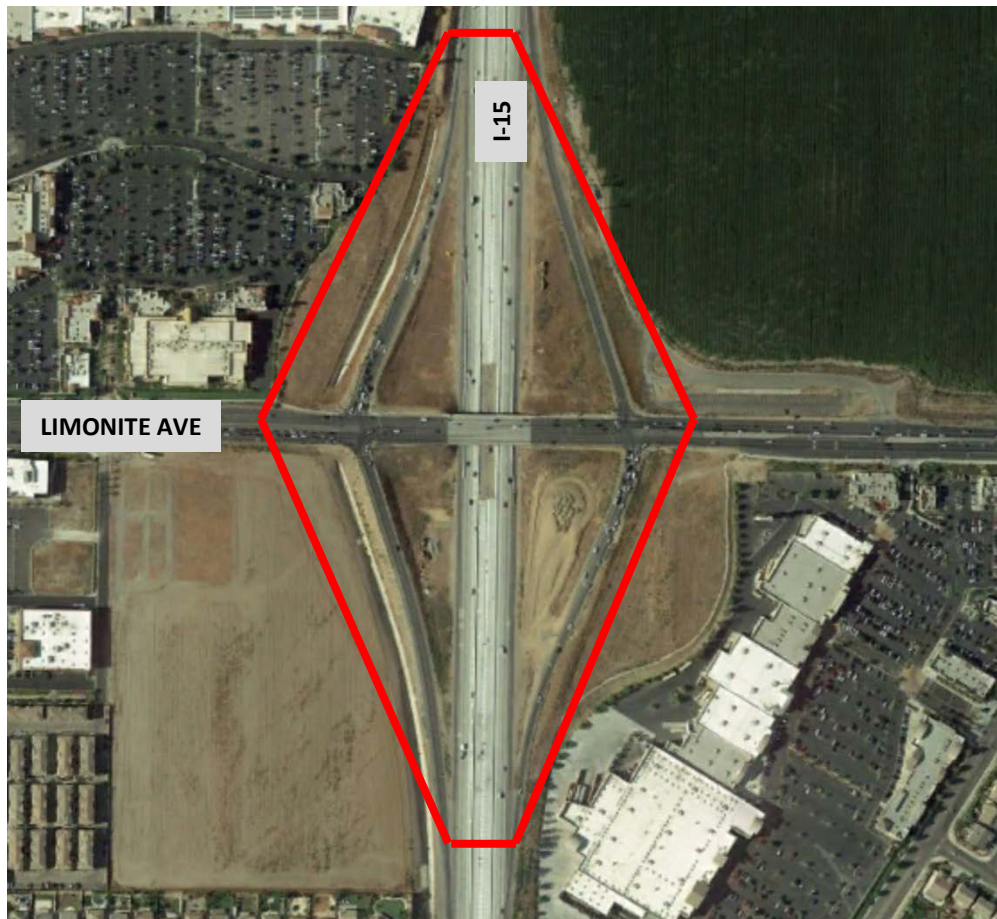
PROJECT NAME: Limonite/I-15 Interchange

PROJECT DESCRIPTION: The improvements consist of a new 8-lane overcrossing, 3 through lanes in each direction plus 2 turn lanes, widening of the off-ramps from 2 to 4 lanes, the addition of 2 new loop on-ramps, and the widening of Limonite Avenue to 4 lanes in each direction between Hamner Avenue to Wineville Avenue. The County of Riverside awarded a construction contract to Atkinson in amount of \$39 million. This project is being managed by the County of Riverside. Construction is estimated to be completed in November of 2019.

PROJECT SCHEDULE:

Construction start date –	August 23, 2018
Anticipated Road Work Complete –	November 13, 2018
Anticipated Project Complete -	Early 2020

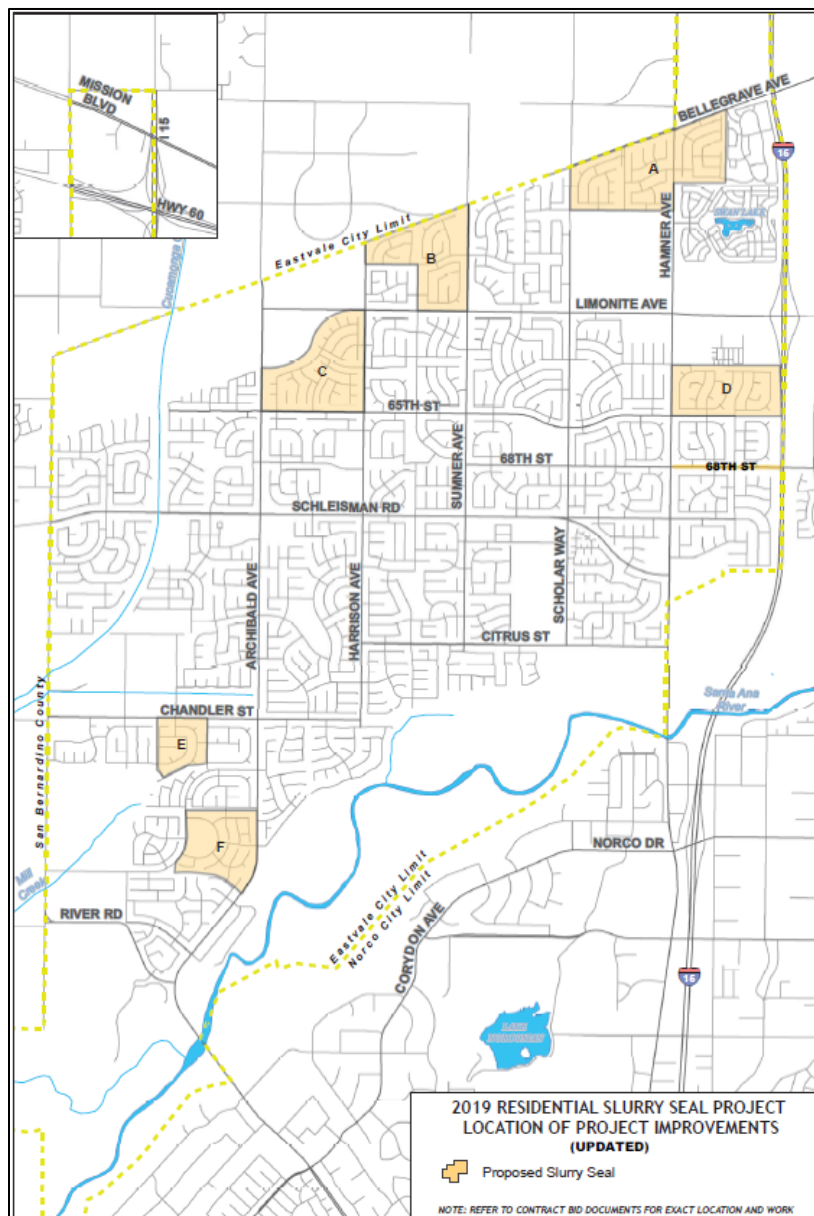
PROJECT MAP:





EASTVALE PUBLIC WORKS PROJECT UPDATES

PROJECT TYPE:	Capital Improvements Project
PROJECT NAME:	2019 Slurry Seal Project
PROJECT DESCRIPTION:	Project to treat pavement on various residential street throughout the City with slurry seal.
PROJECT STATUS:	<ul style="list-style-type: none"> • Crack seal on various locations completed • Slurry seal and striping improvements on various locations
PROJECT SCHEDULE:	Consturction start date - August 12, 2019 Estimated completion date - November 29, 2019
PROJECT MAP:	





EASTVALE PUBLIC WORKS PROJECT UPDATES

PROJECT TYPE: Capital Improvements Project

PROJECT NAME: Limonite Gap Closure

PROJECT DESCRIPTION: Project will connect from 2,450 LF east of Hellman Ave to Archibald Avenue. The total length of the proposed project is approximately 3,200 LF including a bridge over the Cucamonga Creek. Both road and bridge will serve 4 lanes of traffic including bicycle and pedestrian facilities. A separate pedestrian bridge over the Cucamonga Creek little south of the proposed vehicular bridge, as shown on the below map, is also part of this project.

PROJECT STATUS: Design contract was awarded to Mark Thomas. 30% design due December.

PROJECT SCHEDULE: Design contract award date - May 22, 2019
Estimated 30% design complete - December, 2019
Estimated 100% design complete - May, 2020

PROJECT MAP:

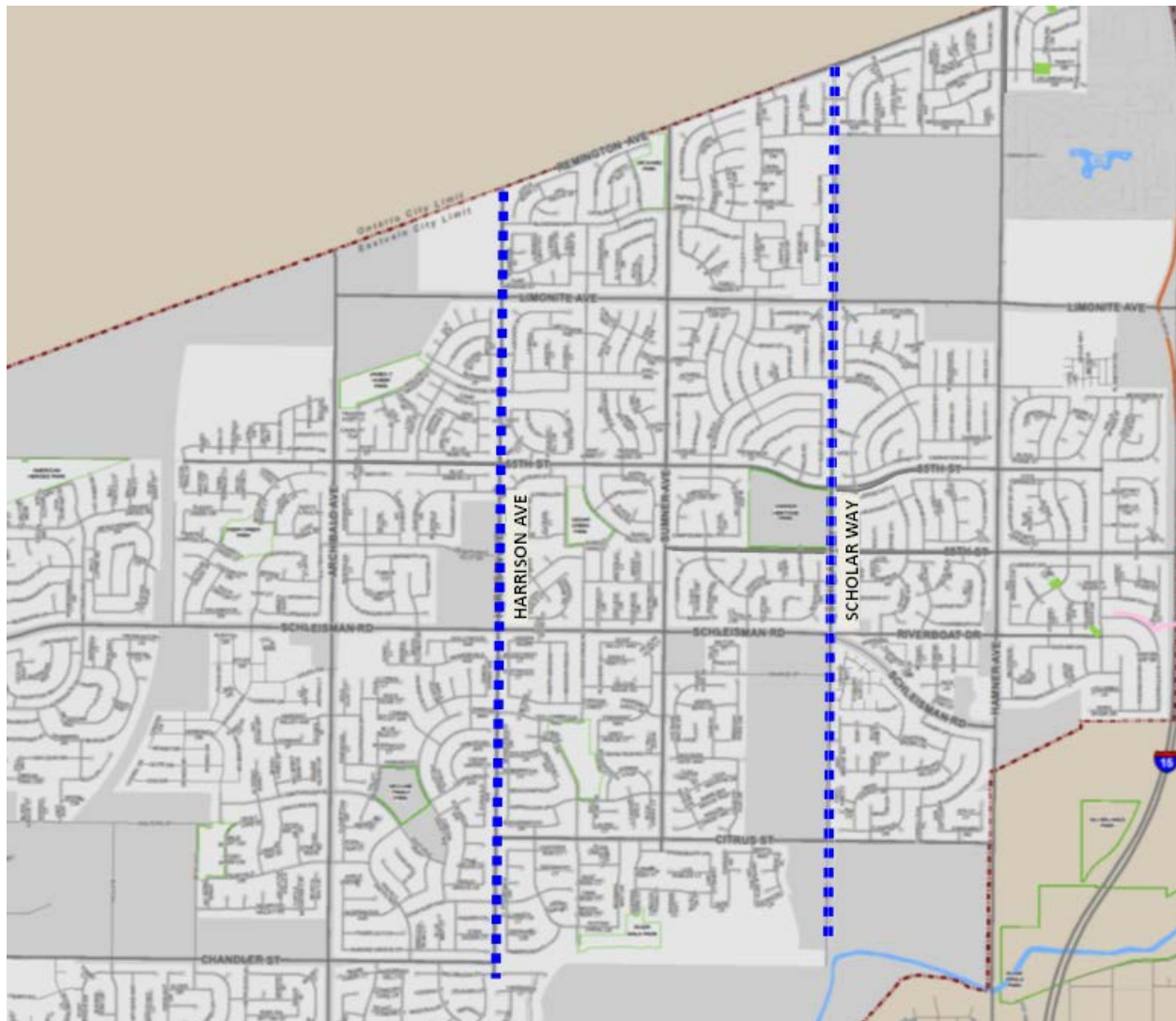




EASTVALE PUBLIC WORKS PROJECT UPDATES

PROJECT TYPE:	Capital Improvements Project
PROJECT NAME:	Improvement of Bike Network Connectivity/ATP Trails
PROJECT DESCRIPTION:	Project will design and construct nearly 5 miles of trails running along Scholar Way and Harrison Avenue. The project will provide dedicated space for people to bike and walk from north Eastvale to the Santa Ana River Trail on the south.
PROJECT STATUS:	Proposals have been received and are under review for the design phase.
PROJECT SCHEDULE:	Estimated design contract award date - January 22, 2019 Estimated design completion date - December 2020 Estimated construction start date - March 2020

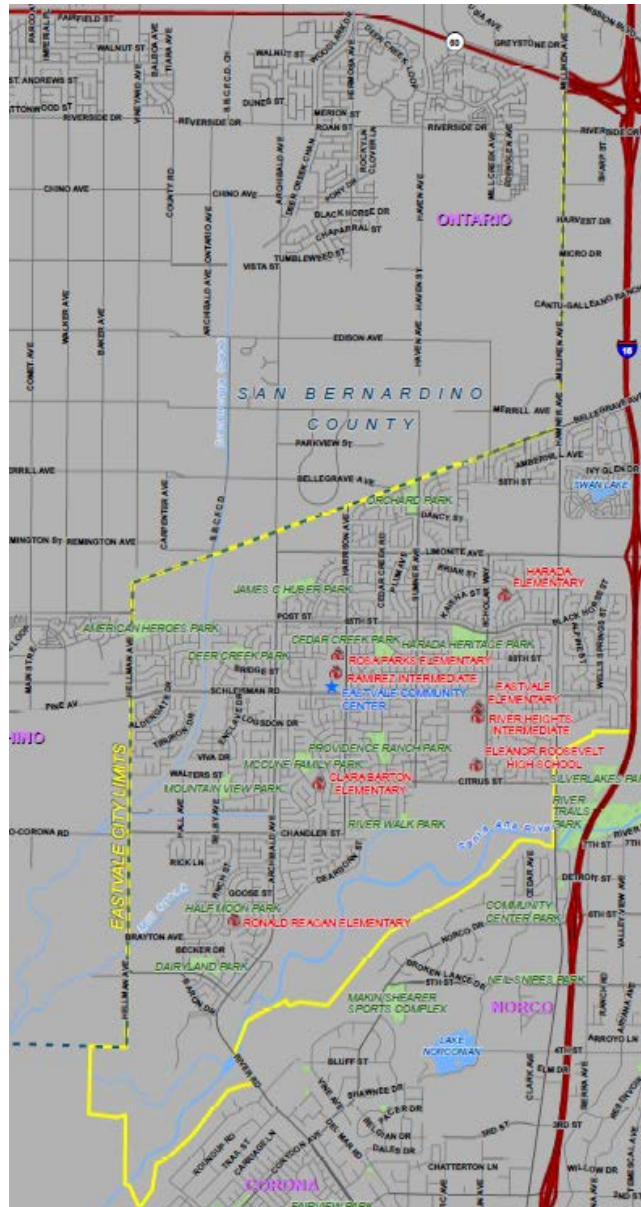
PROJECT MAP:





EASTVALE PUBLIC WORKS PROJECT UPDATES

PROJECT TYPE:	Capital Improvements Project
PROJECT NAME:	Systemic Safety Analysis Report
PROJECT DESCRIPTION:	Perform network collision analysis, identifying safety issues on the City's roadway networks, and development a list of systemic low-cost countermeasures that can be used to prepare future Highway Safety Improvement Program and other safety program applications.
PROJECT STATUS:	Proposals have been received and are under review.
PROJECT SCHEDULE:	Estimated design contract award date - December 11, 2019 Estimated report completion date - August 2020
PROJECT MAP:	

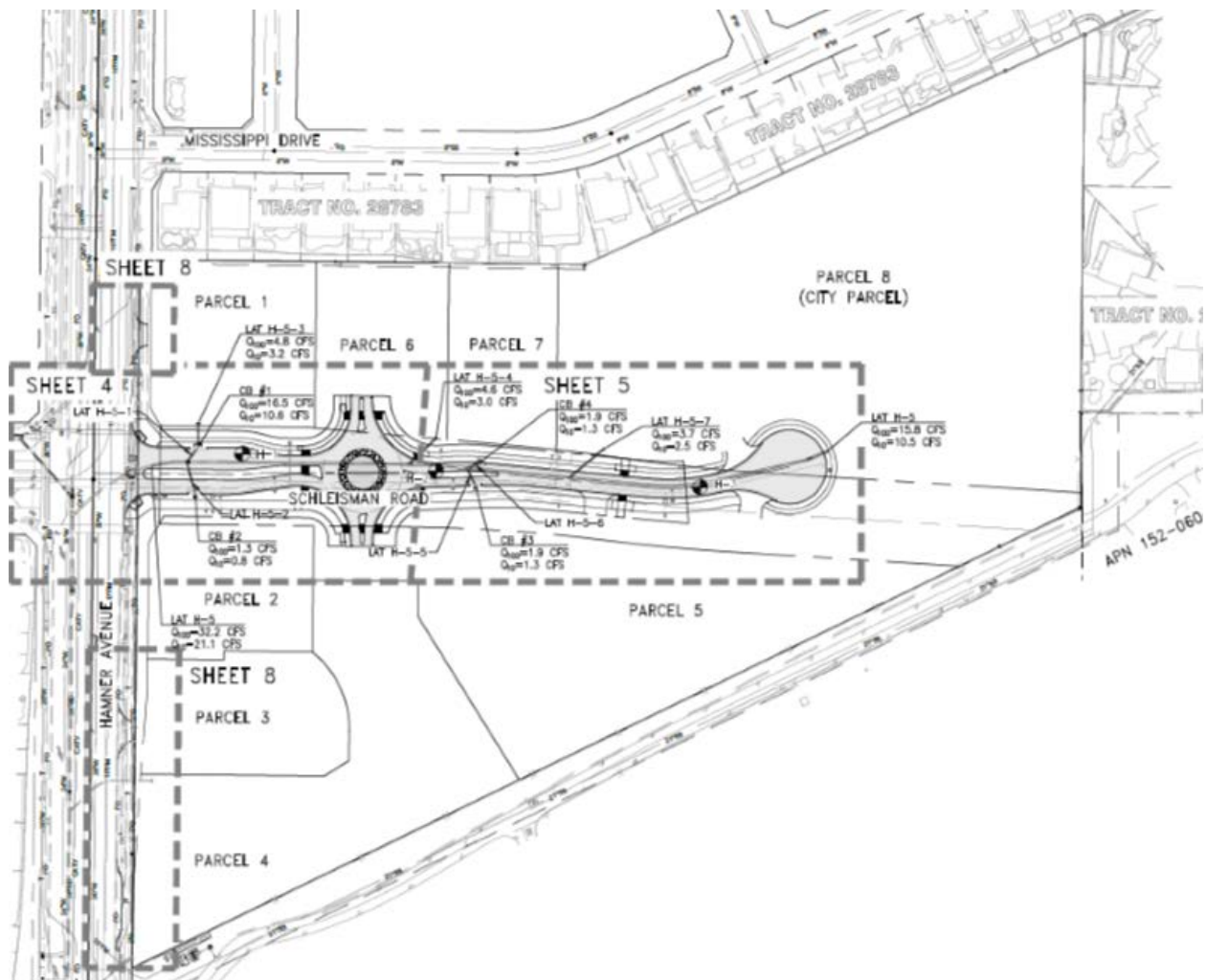




EASTVALE PUBLIC WORKS PROJECT UPDATES

PROJECT TYPE:	Capital Improvements Project
PROJECT NAME:	Schleisman Extension, Hamner Place Landscaping and Hamner Place Storm Drain Project
PROJECT DESCRIPTION:	Street Improvement along Schleisman Road from the intersection with Hamner Avenue including curb & gutter, pavement, sidewalk, a roundabout section, street lights, domestic water facilities, drainage facilities, hardscape and landscaping. The project also includes storm drain facilities along Hamner Avenue from the intersection of Schleisman Road and Hamner Avenue, to the north.
PROJECT STATUS:	Out to bid
PROJECT SCHEDULE:	Estimated design contract award date - December 11, 2019 Estimated report completion date - July 2020

PROJECT MAP:





AGENDA STAFF REPORT

Public Safety Commission Meeting

Consent Calendar

Agenda Item No. 6.5

December 3, 2019

Planning Department Update

Prepared By: Gina Gibson-Williams, Community Development Director

Recommended Action(s)

Receive and file the Planning Department Update

Summary

Planning projects are provided in the attached Planning Project Status list. The list provides a brief summary and status of each project. New information is highlighted in yellow. A map identifying the locations of each project is also included.

Background

None.

Strategic Plan Action – Priority Level: N/A | Target #: N/A | Goal #: N/A

Not Applicable.

Fiscal Impact

Not Applicable.

Prior City Council/Commission Action

Not Applicable.

Attachment(s)

Planning Project Status List and Map



EASTVALE PLANNING: MAJOR PROJECTS SUMMARY

December 3, 2019

Highlighted Text = Updated Information¹

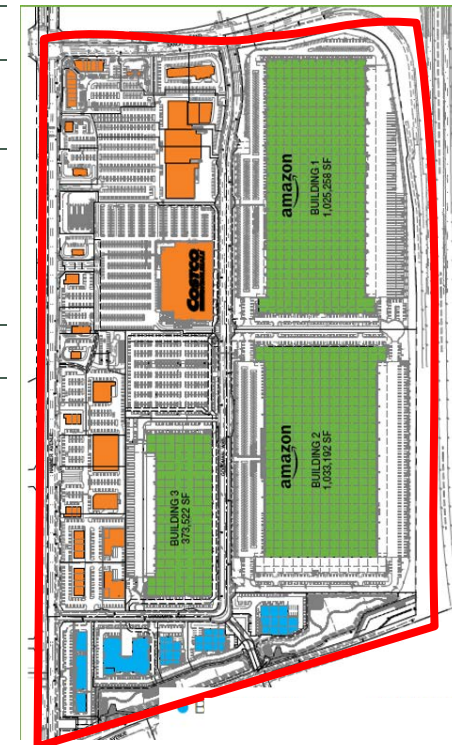
Map ID: 1

Project:	Goodman Commerce Center (formally Lewis Eastvale Commerce Center)
Project No.	11-0271 **see related projects below
Project Location:	190 acres +/- fronting on Hamner Ave. north of Bellegrave Ave. and south of Cantu-Galleano Ranch Road
Project Description:	General Plan Amendment, Change of Zone, and Specific Plan to provide a mix of warehousing, light industrial, office, and retail uses. Major Development Review for the development of two industrial buildings of approximately 1,007,705 square feet and 1,033,192 square feet. CEQA: Environmental Impact Report (certified)
Planner:	Aaron Lobliner

Notes:

- Approved by City Council on November 12, 2014
- See the following projects for more recent activity at the Goodman Commerce Center Development:
 - Map ID #8: Project No. PLN16-00028: Goodman Retail Center CR-4 and CR-5 pads
 - Map ID #12: Project No. PLN17-20033: Retail Building CR-3 – Starbucks & other tenants
 - Map ID #16: Project No. PLN18-20014: Retail Building CR-12 – Quick Quack Carwash
 - Map ID #23: Project No. PLN18-20042: Retail Building CR-11 – Multi-Tenant
 - Map ID#27: Project No. PLN19-20006: Retail Building CR-10- Chick-fil-A

Project Map:



Current Status:

- Approved.
- Various buildings complete, operating and under construction.

1. New projects are added to the bottom of the list as they are submitted.

EASTVALE PLANNING: MAJOR PROJECTS SUMMARY

November 13, 2019

Highlighted Text = Updated Information¹

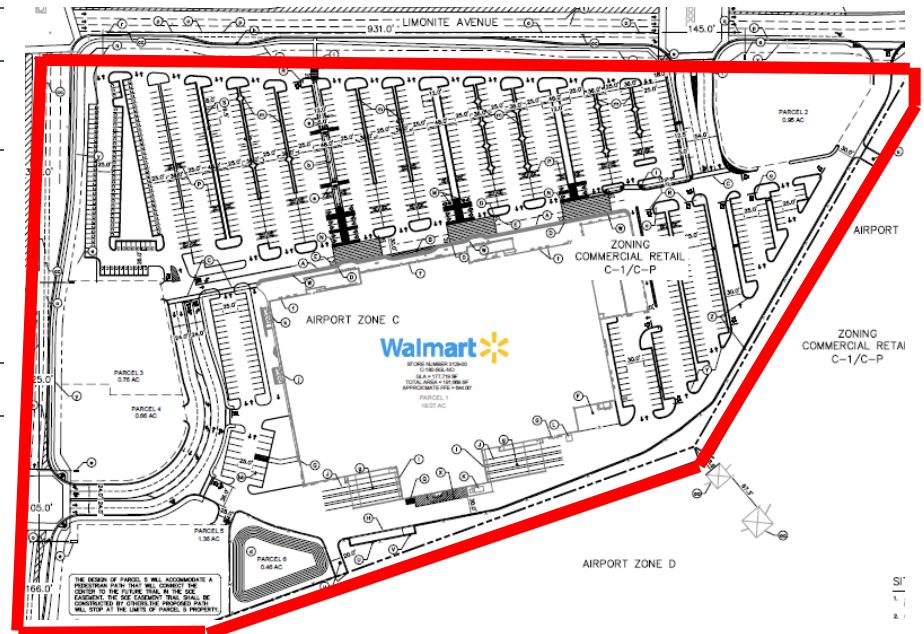
Map ID: 2

Project:	Walmart – Eastvale Crossings
Project No.	12-0051
Project Location:	Southeast corner of Limonite and Archibald Avenues (APN 144-030-039)
Project Description:	General Plan Amendment, Change of Zone, Major Development Review, five Conditional Use Permits, Tentative Tract Map No. 35061, and Variance for the development of a 177,000 +/- sq. ft. retail store and several outparcels on 24.78 acres. CEQA: Environmental Impact Report (certified)
Planner:	Aaron Lobliner

Notes:

- City Council approval on April 26, 2017.
- Project was reviewed by the Riverside County Airport Land Use Commission and received a conditional finding of conformance with the Chino Airport Land Use Compatibility Plan.
- Public review of DEIR available from September 27 to November 17, 2016.
- On March 15, 2017, the Planning Commission reviewed and recommended approval of the project to City Council.
- City Council public hearing on April 12, 2017, with a staff recommendation to continue the hearing to April 26, 2017.
- City Council approval on April 26, 2017. Notice of Determination recorded on April 27, 2017.

Project Map:



Current Status:

- Approved.
- Waiting for applicant to submit construction plans.

1. New projects are added to the bottom of the list as they are submitted.

EASTVALE PLANNING: MAJOR PROJECTS SUMMARY

November 13, 2019

Highlighted Text = Updated Information¹

Map ID: 3

Project: The Campus (former Providence Business Park)

Project No. 12-0750

Project Location: West of Archibald Avenue and approximately 750 ft. south of Limonite Avenue (APNs 144-010-002, -033, -037 & -038)

Project Description: Change of Zone, Major Development Review, and Tentative Parcel Map for the development of a business park consisting of 11 new industrial buildings ranging from 12,850 square feet to 129,000 square feet (totaling approximately 694,770 square feet), one 2-story office building of 33,600 square feet, and two retail buildings totaling 10,600 square feet on 53.37 gross acres of vacant land (former Bircher's site).

CEQA: EIR Addendum

Planner: Aaron Lobliner

Notes:

- Approved by City Council on April 9, 2014
- All industrial buildings are built and occupied.
- See the following projects for more recent activity at The Campus (former Providence Business Park) Development:
 - Map ID# 26: PLN19-20001 The Campus Self-Storage Facility DR, CUP
 - Map ID# 28: PLN19-20008 The Campus 7-Eleven DR, CUP

Project Map:



Current Status:

- Front, vacant land fronting Archibald Avenue is undergoing entitlement process.

1. New projects are added to the bottom of the list as they are submitted.

EASTVALE PLANNING: MAJOR PROJECTS SUMMARY

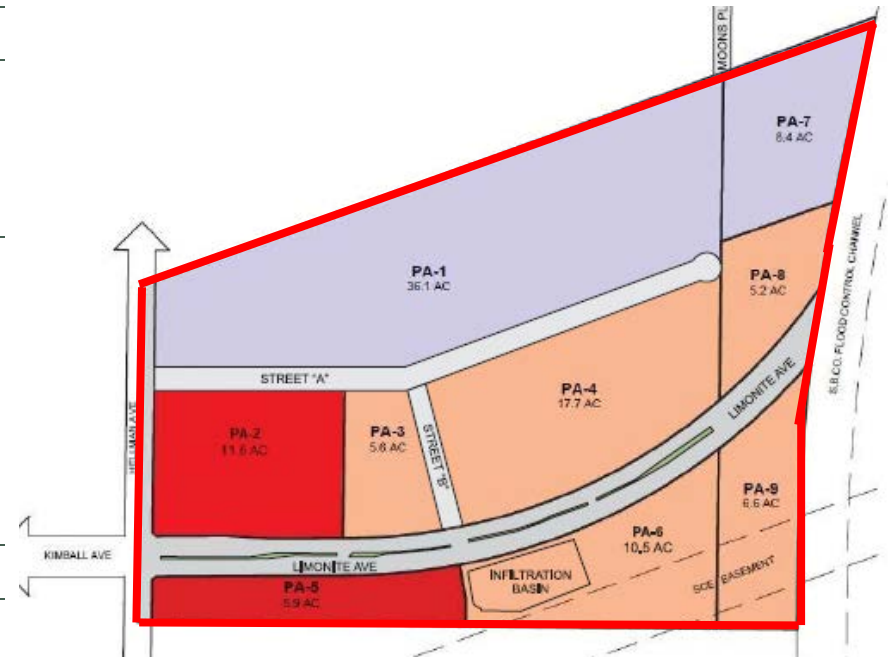
November 13, 2019

Highlighted Text = Updated Information¹

Map ID: 4

Project:	The Ranch
Project No.:	15-0783
Project Location:	Northeast and southeast corners of Hellman and future Limonite (Kimball) Avenues, west of Cucamonga Creek Channel. Moons Site (APNs: 144-010-008-0, 144-101-013-4) and Rodriguez Site (APN: 144-010-009-1)
Project Description:	<ul style="list-style-type: none"> • Specific Plan Amendment to modify boundaries for Planning Areas 1 through 6, land use designation for Planning Area 5, and revisions to allowable uses. No revisions to Planning Areas 7 through 9. • Major Development Review for six (6) industrial buildings totaling 985,000 square feet on six (6) parcels. • Tentative Parcel Map No. 36787 to subdivide approximately 97 gross acres into 14 legal parcels. CEQA: EIR Addendum
Planner:	Aaron Lobliner

Project Map



Notes:

- Approved by City Council on December 9, 2015.
- February 19, 2016, a new owner purchased the six (6) industrial lots.
- Monument Sign approved on February 1, 2018.
- See the following projects for more recent activity at The Ranch:
 - Map ID# 15: Project No. PLN18-20007: Eastvale 88,000 square-foot Warehouse building in Planning Area 3.
 - Map ID #24: Project No. PLN18-20050: Howard Industrial -Major Development Review, Tentative Map for Planning Areas 7, 8 and 9.
 - Map ID #36: Project No. PLN19-20034: Transwestern – Major Development Review, Amendment to Tentative Parcel Map for Planning Areas 7, 8, and 9.
 - Map ID #37: Project No. PLN19-20035: Summit Development – Pre-Application for Planning Area 6.

Current Status:

- Approved.
- Continue discussing potential development for commercial portion.
- Construction of six industrial/warehouse buildings are completed.
- Final Cancellation of the Williamson Act Contract for the Rodriguez Site scheduled for City Council meeting on July 24, 2019

1. New projects are added to the bottom of the list as they are submitted.

EASTVALE PLANNING: MAJOR PROJECTS SUMMARY

November 13, 2019

Highlighted Text = Updated Information¹

Map ID: 5

Project:	Leal Master Plan
Project No.	Special Project
Project Location:	160 acres ± at the northwest corner of Hamner and Limonite Avenue, east of Scholar Way, and south of 58th Street.
Project Description:	This Master Plan describes the community's vision for the project area, identifies appropriate land uses, and includes the development standards that are necessary to achieve the vision, defines the character of the project's development, lists the steps involved with the development process, and provides the project's implementation plan. CEQA: EIR
Planner:	Gina Gibson-Williams/Aaron Lobliner

Notes:

- In September 16, 2016, the Planning Commission reviewed and recommended approval to City Council. May 2017 – City has been asked by property owner's representative to postpone action on the project while issues related to the estate of Brad Leal are resolved August 30, 2017 – City met with Leal family and prospective developer to discuss processing and timing.
- City Council Approved Master Plan and Final Environmental Impact Report on December 13, 2017.

Project Map:



Current Status:

- Adopted by City Council on December 13, 2017.
- Staff continues to coordinate with the property owners as they seek a developer(s) for the site.

1. New projects are added to the bottom of the list as they are submitted.

EASTVALE PLANNING: MAJOR PROJECTS SUMMARY

November 13, 2019

Highlighted Text = Updated Information¹

Map ID: 6

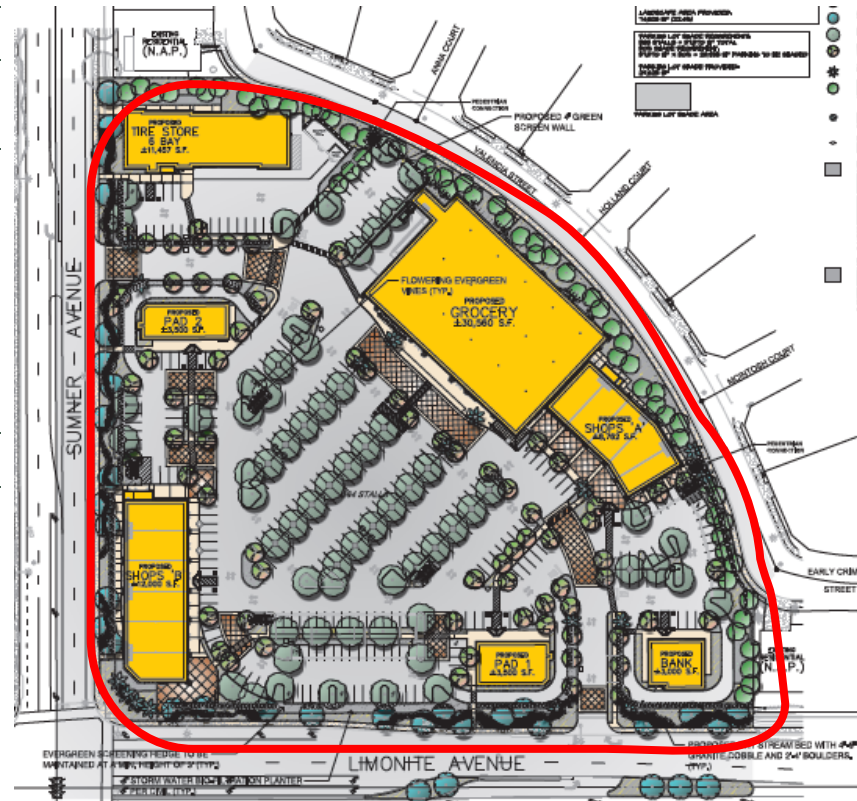
Project:	Eastvale Marketplace
Project No.:	15-0958
Project Location:	Northeast corner of Limonite and Sumner Avenue (APNs 164-030-019)
Project Description:	Major Development Review for the development of a new neighborhood retail center with multi-tenant and single tenant buildings totaling 72,779 sq. ft. on 7.64 acres, Conditional Use Permits for the operation of three drive-through facilities and a tire store, and Conditional Use Permit for the sales of alcohol in the grocery store. CEQA: Mitigated Negative Declaration
Planner:	Aaron Lobliner

Notes:

- See the following projects for more activities at Eastvale Marketplace:
 - Map ID #30: Project PLN19-20018: Big Wok Alcohol CUP
- Vines along the back of Smart & Final and trees along the pedestrian walkway in the parking lot have been installed.
- Benches and potted plants have been added to the patio area east of Smart & Final.
- The multi-tenant building on the corner of Sumner and Limonite ("Shops B") are under new ownership.



Project Map:



Current Status:

- Approved.

1. New projects are added to the bottom of the list as they are submitted.

EASTVALE PLANNING: MAJOR PROJECTS SUMMARY

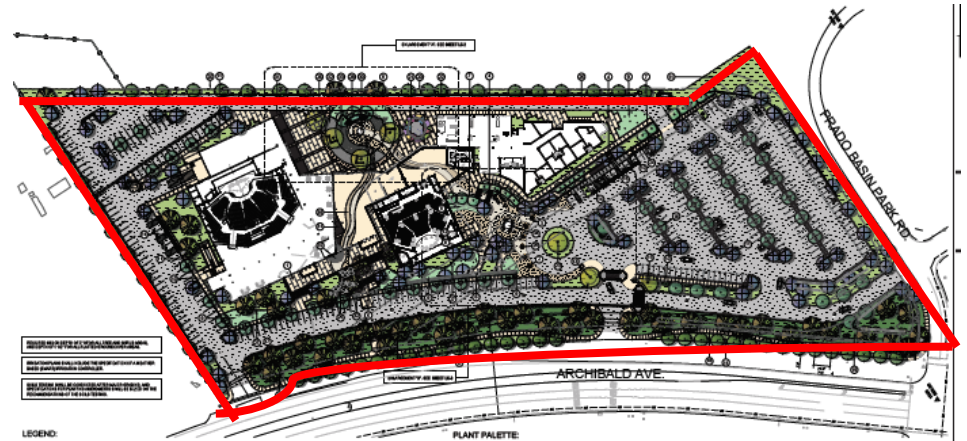
November 13, 2019

Highlighted Text = Updated Information¹

Map ID: 7

Project:	Vantage Point Church
Project No.	15-1174
Project Location:	8500 Archibald Ave. (APN: 130-080-005 and -008)
Project Description:	Major Development Review for the development of an approximately 85,000 sq. ft. church which includes a sanctuary, classrooms, cafe, and a bookstore on 10.43 acres. CEQA: Mitigated Negative Declaration
Planner:	Aaron Lobliner

Project Map:



Current Status:

- Approved.
- Building construction plans approved October 9, 2019.
- Undergoing site grading

Notes:

- Major Development Review and Conditional Use Permit (CUP) received on May 1, 2015. (Staff later determined CUP was not needed.)
- Planning Commission approval on March 21, 2018. Approval letter, final COAs, and stamped plans to applicant on April 12, 2018.
- Comment letter to applicant on construction plans on June 4, 2018. Construction plans 3rd submittal received July 24, 2018.
- Grading Plan approved on August 21, 2018.
- Construction building plans approved on October 9, 2018. Grading Plan approved on August 21, 2018.
- Landscape plans approved on October 18, 2018



1. New projects are added to the bottom of the list as they are submitted.

EASTVALE PLANNING: MAJOR PROJECTS SUMMARY

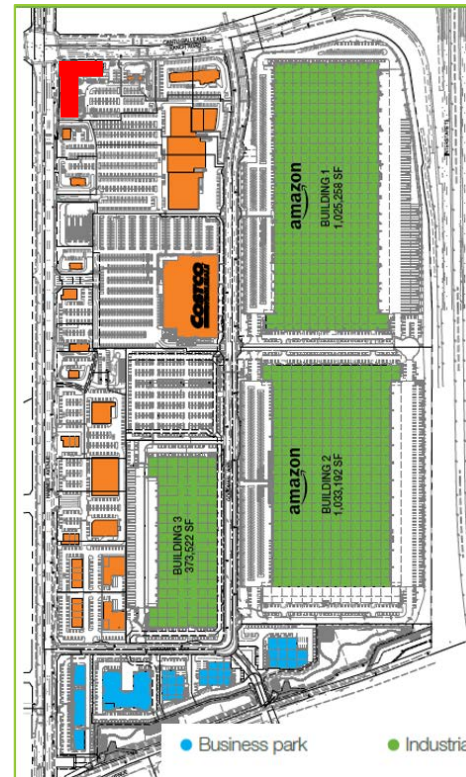
November 13, 2019

Highlighted Text = Updated Information¹

Map ID: 8

Project:	Goodman Retail Center – Corner Buildings
Project No.	16-00028
Project Location:	Southeast corner of Cantu Galleano Ranch Road and Hamner Ave.
Project Description:	Major Development Review for the development of 2 multi-tenant retail buildings (CR-4 and CR-5) totaling approximately 26,260 square feet in the retail area adjacent to Costco at the Goodman Commerce site. CEQA: Previously certified EIR
Planner:	Aaron Lobliner

Project Map:



Current Status:

- Approved.
- Both buildings are under construction.

Notes:

- Major Planning Commission approval on March 7, 2017
- Planning approved construction plans for the first two retail buildings (CR-4 & CR-5), and site improvement plans for retail center on March 26, 2018.
- See the following projects for other retail projects in the Goodman Commerce Center:
 - Map ID #12 Project No. PLN17-20033: Retail Building CR-3 – Starbucks
 - Map ID #16 Project No. PLN18-20014: Retail Building CR-12 – Quick Quack Carwash

1. New projects are added to the bottom of the list as they are submitted.

EASTVALE PLANNING: MAJOR PROJECTS SUMMARY

November 13, 2019

Highlighted Text = Updated Information¹

Map ID: 9

Project: Medical Office Building and Dialysis Center at The Marketplace at The Enclave

Project No. PLN16-00038

Project Location: 14252/14260 Schleisman Rd; at The Marketplace at The Enclave shopping center (144-860-018 and 114-860-020)

Project Description: Major Development Review for the construction of a 30,000-sq. ft. two story medical office building and 10,000-sq. ft. dialysis center on the empty area at the south end of the shopping center.

CEQA: Previously certified EIR

Planner: Allen Lim

Notes:

- Approved by Planning Commission on May 17, 2017.
- Approved Building Construction Plan for the 2-story medical office building.
- Landscape plans approved
- Construction Trailer Temporary Use Permit approval letter to applicant on February 12, 2019
- Crosswalk has been modified according to the conditions of approval.
- Revisions for the 2-story office building was received on May 29, 2019; comments provided June 3, 2019.



Project Map:



Current Status:

- DaVita Dialysis Center is completed
- 2-story medical office building is under construction

1. New projects are added to the bottom of the list as they are submitted.

EASTVALE PLANNING: MAJOR PROJECTS SUMMARY

November 13, 2019

Highlighted Text = Updated Information¹

Map ID: 10

Project:	South Milliken Distribution Center
Project No.:	PLN17-20013
Project Location:	East of Milliken Avenue, north of the SR-60, 0.2-mile west of the I-15/SR-60 interchange, and 0.4 miles south of Mission Boulevard APNs: 156-030-001 & -002
Project Description:	<ul style="list-style-type: none">General Plan Amendment, Change of Zone, and Major Development Review for the development of a 273,636-square foot industrial warehouse building with 29 dock doors located on a 15.8-acre site. General Plan Amendment of the entire site from Commercial Retail to Light Industrial. Change of Zone for the northern 12.5-acre lot from "C-P-S" to "MM"; no changes to the 3.3-acre lot with "M-M" zoning at southeastern portion of the site.CEQA:Not Determined.
Planner:	Aaron Lobliner

Project Map:



Notes:

- Received application on April 27, 2017.
- On February 7, 2018 Planning Commission recommended approval to City Council.
- March 14, 2018 City Council continued project to March 28, 2018 Public Hearing.
- On March 28, 2018 City Council approval
- Approval letter, final Conditions of Approval, stamped plans sent to applicant on April 10, 2018.
- Signed resolution sent to applicant on April 11, 2018.
- 2nd year fly survey completed; result is negative

Current Status:

- Approved

1. New projects are added to the bottom of the list as they are submitted.

EASTVALE PLANNING: MAJOR PROJECTS SUMMARY

November 13, 2019

Highlighted Text = Updated Information¹

Map ID: 11

Project:	Hamner Place (former Polopolus Property)
Project No.	PLN17-20015
Project Location:	7270 Hamner Avenue; North of Silver Lakes Sports Complex and east of Hamner Avenue. APNs: 152-060-002 and -003
Project Description:	General Plan Amendment, Change of Zone, Tentative Parcel Map, and Major Development Review for the development of a retail center, and four Conditional Use Permits for the operations of certain uses and sales of alcohols. CEQA: Environmental Impact Report (EIR)
Planner:	Gina Gibson-Williams/Aaron Lobliner

Notes:

- June 25, 2018, applicant withdrew two Conditional Use Permits (for a drive-through on Pads 2 and for alcohol sales in a future gas station convenience store).
- June 27, 2018: City Council certified the Final EIR and approved all applications. Notice of Determination recorded on June 28, 2018.
- See the following projects in the retail center:
 - Map ID #22: Project No. PLN18-20041: Chevron Gas Station and Convenience Store
 - Map ID #33: Project No. PLN19-20023: Lewis Retail Suites Hotel DR CUP
- Mass grading plan received on June 10, 2019; comments provided on June 12, 2019 requesting for documentations showing compliance with the conditions of approval for grading permit issuance.
- Rough grading plans received on June 24, 2019; Received documentation showing compliance to Conditions of Approval and approved July 2, 2019.

Project Map:



Current Status:

- Approved by City Council
- Waiting for building construction plans
- Groundbreaking July 12, 2019
- Currently undergoing grading

1. New projects are added to the bottom of the list as they are submitted.

EASTVALE PLANNING: MAJOR PROJECTS SUMMARY

November 13, 2019

Highlighted Text = Updated Information¹

Map ID: 12

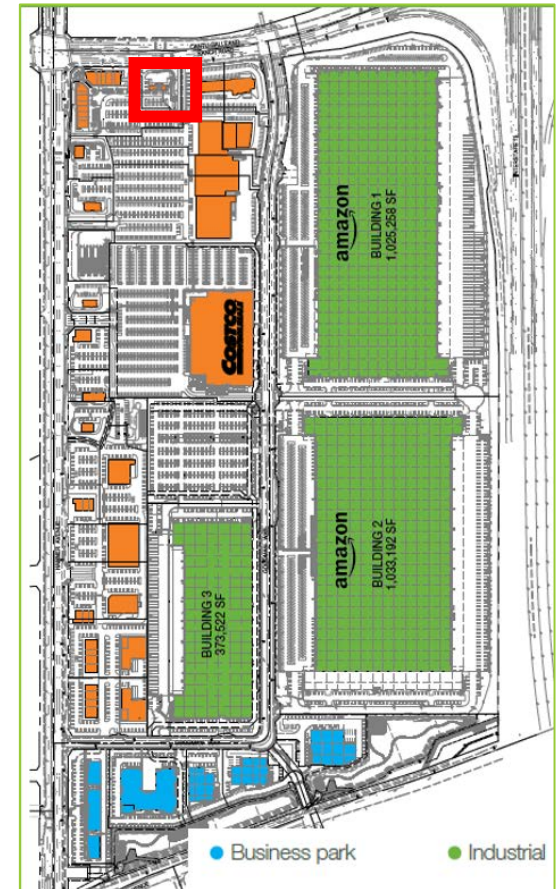
Project:	Goodman Retail Building CR-3 and Starbucks Drive-Through DR & CUP
Project No.	PLN17-20033
Project Location:	Southeast corner of Hamner Avenue and Cantu-Galleano Ranch Road and west of Goodman Way; Goodman Commerce Center
Project Description:	Major Development Review for the development of CR-3, a 4,000 square-foot multi-tenant building and Conditional Use Permit for a drive-through located in the retail portion of the Goodman Commerce Center
Planner:	Aaron Lobliner

Notes:

- Planning Commission approval on March 21, 2018.
- See the following projects for more recent activity at the Goodman Commerce Center Development:
 - Map ID #8: Project No. PLN16-00028: Goodman Retail Center CR-4 and CR-5 pads
 - Map ID #12: Project No. PLN17-20033: Retail Building CR-3 – Starbucks & other tenants
 - Map ID #16: Project No. PLN18-20014: Retail Building CR-12 – Quick Quack Carwash
 - Map ID #23: Project No. PLN18-20042: Retail Building CR-11 – Multi-Tenant Building
 - Map ID #27: Project No. PLN19-20006: Retail Building CR-10 - Chick-fil-A



Project Map:



Current Status:

- Starbucks in operation as of February 7, 2019.
- Reviewing Tenant Improvements Plans for other units.

1. New projects are added to the bottom of the list as they are submitted.

EASTVALE PLANNING: MAJOR PROJECTS SUMMARY

November 13, 2019

Highlighted Text = Updated Information¹

Map ID: 13

Project:	Sendero Cluster Homes by Lennar
Project No.	PLN17-20043
Project Location:	West portion of Sendero (Tracts 36775-2, 36775-3, and 36775) at northwest corner of Limonite Avenue and Harrison Avenue.
Project Description:	Minor Development Review for Master Home Plan of the 6-Pack and 8-Pack at Sendero.
Planner:	Allen Lim

- Received application on December 19, 2017, plans provided on December 21, 2017.
- Final Site of Development plans are approved on May 1, 2018.
- Architectural elevation approved on August 14, 2018.
- On-site Subdivision Flags signage submitted on March 28, 2019 by Lennar and approved on April 30, 2019.

Project Map:



Current Status:

- Model homes are open.
- Under construction.

1. New projects are added to the bottom of the list as they are submitted.

EASTVALE PLANNING: MAJOR PROJECTS SUMMARY

November 13, 2019

Highlighted Text = Updated Information¹

Map ID: 14

Project:	Prado Residential Development by Lennar
Project No.	PLN18-20008
Project Location:	Southeast corner of Cucamonga Creek Channel and Schleisman Road
Project Description:	Major Development Review to develop a gated community of 243 attached and detached single-family homes on approximately 19 acres at Tract 35751 on Schleisman Road.
Planner:	Allen Lim

Notes:

- Received application on February 22, 2018.
- Planning Commission approval on June 20, 2018.
- Approved final site of development on December 10, 2018.
- Approved construction plans and fence and wall plan on March 7, 2019.
- HOA production landscaping plans approved on March 13, 2019.
- Temporary Use Permit (TUP) for model home complex and sales trailer approved on March 13, 2019.

Project Map:



Current Status:

- Project site is currently undergoing grading.
- Model homes are under construction.
- Revised HOA landscape plans approved May 16, 2019.

1. New projects are added to the bottom of the list as they are submitted.

EASTVALE PLANNING: MAJOR PROJECTS SUMMARY

November 13, 2019

Highlighted Text = Updated Information¹

Map ID: 15

Project:	The Ranch Planning Area 3 Warehouse/Industrial Building
Project No.	PLN18-20007
Project Location:	Planning Area 3 of The Ranch at Eastvale
Project Description:	Major Development Review to construct an 88,000 square-foot industrial building on 5 acres in Planning Area 3 of The Ranch at Eastvale.
Planner:	Aaron Lobliner

Notes:

- Received application on February 14, 2018.
- On May 16, 2018 Planning Commission approved Major Development Review.



Project Map:



Current Status:

- Approved construction plans October 31, 2018.
- Currently under construction.

1. New projects are added to the bottom of the list as they are submitted.

EASTVALE PLANNING: MAJOR PROJECTS SUMMARY

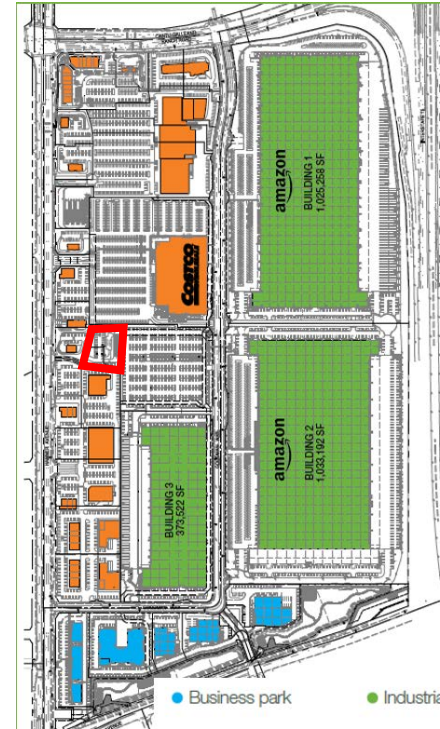
November 13, 2019

Highlighted Text = Updated Information¹

Map ID: 16

Project:	Goodman Retail CR-12 – Quick Quack Car Wash
Project No.	PLN18-20014
Project Location:	West of Amazon off-site parking lot and south of Costco parking lot in the retail portion of Goodman Commerce Center
Project Description:	Major Development Review for a proposed self-serve car wash with a 3,571-square foot car-wash tunnel, vacuum canopy structure, and associated parking.
Planner:	Aaron Lobliner

Project Map:



Notes:

- Received application on March 21, 2018
- Planning Commission approval on June 20, 2018.
- See the following projects for more recent activity at the Goodman Commerce Center Development:
 - Map ID #8: Project No. PLN16-00028: Goodman Retail Center CR-4 and CR-5 pads
 - Map ID #12: Project No. PLN17-20033: Retail Building CR-3 – Starbucks & other tenants
 - Map ID #16: Project No. PLN18-20014: Retail Building CR-12 – Quick Quack Carwash
 - Map ID #23: Project No. PLN18-20042: Retail Building CR-11 – Multi-Tenant
 - Map ID#27: Project No. PLN19-20006: Retail Building CR-10- Chick-fil-A
- Revised construction plans approved on May 30, 2019.



Current Status:

- Approved
- Quick Quack Car Wash is completed.

1. New projects are added to the bottom of the list as they are submitted.

EASTVALE PLANNING: MAJOR PROJECTS SUMMARY

November 13, 2019

Highlighted Text = Updated Information¹

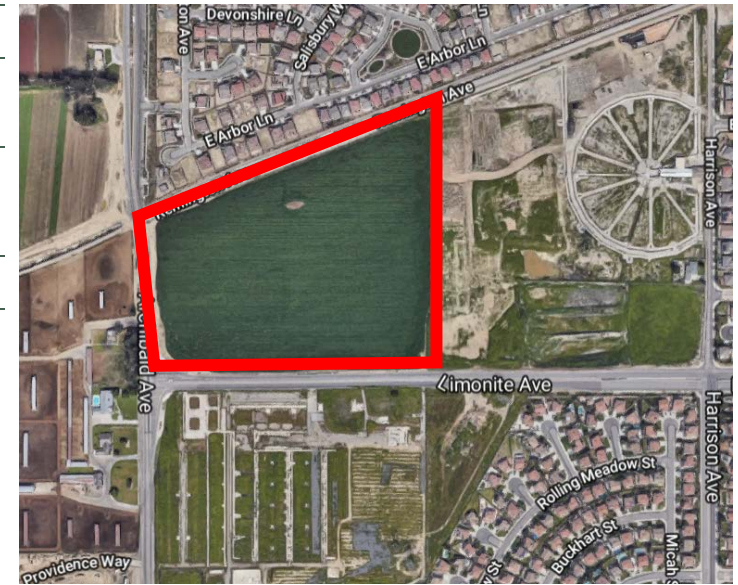
Map ID: 17

Project:	The Merge Retail and Industrial Center
Project No.:	PLN18-20026
Project Location:	Northeast corner of Limonite Avenue and Archibald Avenue; APN: 164-010-019-6
Project Description:	Major Development Review, Tentative Parcel Map, and Variance for the development of a retail and light industrial center on an approximately 26-acre site, and various Conditional Use Permits for certain uses.
Planner:	Aaron Lobliner/Peter Minegar

Notes:

- Received application on May 24, 2018; Development plans received on June 26, 2018.
- Draft Environmental Impact Report (EIR) available for a 45-day public review period from September 18, 2018, to November 2, 2018.
- Condition Use Permits application submitted on October 1, 2018.
- November 21, 2018, Planning Commission recommended approval of all applications, plus added new conditions for the Major Development Review application.
- December 12, 2018, City Council certified the EIR and approved all applications as recommended by the Planning Commission including the new conditions recommended by the Planning Commission, plus the Council added one new condition for the Major Development Review.
- Construction building plans received April 2, 2019 for Sprouts and Starbucks. Comments provided on April 29, 2019.
- Construction building plans received April 24, 2019 for all industrial buildings (1 through 6). Comments provided on May 22, 2019.
- Construction building plans for Chevron received May 8, 2019; comments provided June 11, 2019.

Project Map:



Current Status:

- City Council approval on December 12, 2018.
- January 9, 2019, City Council conducted second reading of ordinance for Change of Zone.
- Received Industrial Precise Grading Plans 8/15
- Received Retail/Commercial Precise Grading Plans 8/20
- Construction building plan resubmittal received 9/17. Comments provided 9/26

1. New projects are added to the bottom of the list as they are submitted.

EASTVALE PLANNING: MAJOR PROJECTS SUMMARY

November 13, 2019

Highlighted Text = Updated Information¹

Map ID: 18

Project:	Sendero Century Communities Front Loaded Homes
Project No.	PLN18-20032
Project Location:	Northeast corner of Archibald Avenue and Chandler Street; Tract Map 36775-1
Project Description:	Minor Development Review for architectural design and Final Site of Development for front loaded homes (eastern side of the SEC easement) at Sendero. This portion consists of 82 single-family homes.
Planner:	Allen Lim

Notes:

- Received application on June 27, 2018; has been routed to the other departments for a review.
- Architectural plans and enhancement map approved on August 15, 2018.
- Phase 1 and 2 of Precise Grading Plans approved September 9, 2018.
- Revised lot exhibits approved September 20, 2018.
- Front load landscape plans are approved on December 11, 2018.
- Sendero Century Community Subdivision Sign application submitted on February 7, 2019.
- Applicant resubmitted On-site subdivision flags signage plans May 6, 2019.
- Received revised Final Site of Development (FSOD) map on May 7, 2019 and grading plans on May 22, 2019. Comments provided on May 23, 2019.
- On-site subdivision flags approved April 30, 2019.
- Applicant proposes house plotting changes.

Project Map:



Current Status:

- Under construction.
- Model homes are open.
- Waiting for revised FSOD map.

1. New projects are added to the bottom of the list as they are submitted.

EASTVALE PLANNING: MAJOR PROJECTS SUMMARY

November 13, 2019

Highlighted Text = Updated Information¹

Map ID: 19

Project:	Restaurant with Drive-Up Pickup Window (Pizza Hut)
Project No.	PLN18-20037
Project Location:	Northwest corner of Hamner and Schleisman Ave (between Fire Station 27 and 99 Cents Only Store)
Project Description:	<ul style="list-style-type: none">Major Development Review for the development of a restaurant (proposed to be a Pizza Hut) with a drive-through pickup window.Two Conditional Use Permits for the operation of the drive-through lane and alcohol sales for on-site consumption.Tentative parcel map to subdivide the site into two parcels.
Planner:	Emily Elliot

Notes:

- Received application on July 2, 2018; has been routed to the other departments for review.
- Application incomplete letter sent to applicant on July 18, 2018.
- Met with 7-Eleven applicants on August 15, 2018, to discuss their building design
- Comment letter to applicant on September 17, 2018.
- Received e-mail from applicant on December 27, 2018 requesting removal of 7-Eleven from the application and refund for CEQA review.
- Received second submittal March 11, 2019.
- Second Incompleteness letter out to applicant April 10, 2019.
- Comment letter sent out to applicant on April 29, 2019.

Project Map:



Current Status:

- Received third submittal on August 22, 2019.

1. New projects are added to the bottom of the list as they are submitted.

EASTVALE PLANNING: MAJOR PROJECTS SUMMARY

November 13, 2019

Highlighted Text = Updated Information¹

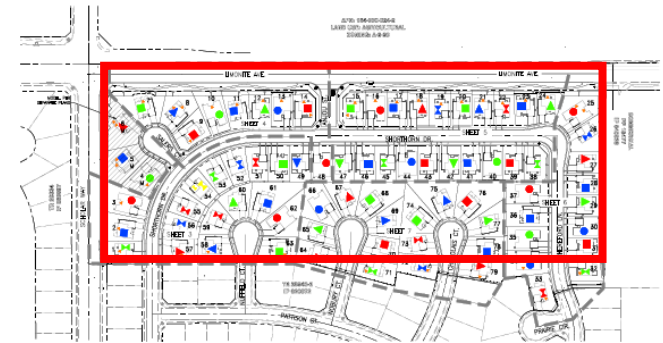
Map ID: 20

Project:	Pulte Residential Development
Project No.:	PLN18-20038
Project Location:	Southeast corner of Limonite Avenue and Scholar Way (west of Cloverdale Marketplace)
Project Description:	Minor Development Review for a Master Home Plan consisting of 79 residential units. This tract (Tract No. 28943) was approved and finalized by the County prior to cityhood.
Planner:	Aaron Lobliner

Notes:

- Received application on July 9, 2018. This is a recorded subdivision; application is for the review of the design of the homes only.
- Approval letter sent on August 31, 2018.
- Revised architectural plans approved October 10, 2018.
- Construction building plans approved October 30, 2018.
- Site is being graded consistent with the recorded subdivision map.
- Approved construction fence and wall plans on March 7, 2019.
- Temporary Use Permit (TUP) for sales office approved March 26, 2019.
- On-site Subdivision Flags Signage approval letter sent on March 27, 2019.
- Received revised elevations for Lot 54 on April 25, 2019 and comment provided on May 2, 2019.
- Final revised elevation for lot 54 received on May 21, 2019; approved on May 22, 2019.

Project Map:



Current Status:

- Approved by Planning Director
- Models homes opened on March 9, 2019.

1. New projects are added to the bottom of the list as they are submitted.

EASTVALE PLANNING: MAJOR PROJECTS SUMMARY

November 13, 2019

Highlighted Text = Updated Information¹

Map ID: 21

Project:	Sunshine Growers Nursery
Project No.	PLN18-20040
Project Location:	North of Riverside Drive; south of SR 60, east of Milliken Avenue, west of I-15; (Assessor's Parcel Number 156-030-021, -023,-030, and -031)
Project Description:	Major and Minor Development Review for the installation of a 20,000 square-foot greenhouse for a plant nursery for Sunshine Growers Nursery located on Riverside Dr. and Hamner Ave.
Planner:	Allen Lim/Aaron Lobliner

Notes:

Major Development Review

- Applications received on July 25, 2018 and October 3, 2018.
- Approved by Planning Commission on October 17, 2018.
- Approval letter and development plans sent on November 5, 2018.
- Construction plans for the nursery, retail, and wall for the trash enclosure received on April 8, 2019. Comment provided on April 23, 2019.
- Waiting for submittal for installation of propane gas from applicant.
- Grading plans received April 3, 2019. Comments provided April 24, 2019.
- Landscape plans received May 15, 2019. Comments provided May 23, 2019.

Project Map:



Current Status:

- Approved.
- Grading plans approved June 17, 2019
- Landscape plans approved June 20, 2019
- Construction plans approved July 17, 2019

1. New projects are added to the bottom of the list as they are submitted.

EASTVALE PLANNING: MAJOR PROJECTS SUMMARY

November 13, 2019

Highlighted Text = Updated Information¹

Map ID: 22

Project:	Chevron at Lewis Retail at the Hamner Place (former Polopolus Property)
Project No.	PLN18-20041
Project Location:	7180 Hamner Avenue; northeast corner of Hamner Ave. and Schleisman Rd. (Assessor's Parcel Number 152-060-003)
Project Description:	Major Development Review for a new Chevron gas station with a 3,018 square-foot convenience store, a 3,472 square-foot canopy with five (5) fueling dispensers, and associated site improvements. <ul style="list-style-type: none">• Conditional use permit for sales of beer and wine for off-site consumption.
Planner:	Aaron Lobliner

Notes:

- Received application on July 24, 2018; has been routed to the other departments for a review.
- Incompleteness letter out to applicant on August 28, 2018.
- Comment letter provided to applicant on September 18, 2018.
- Second revised development plans received November 5, 2018.
 - Second submittal comment letter provided to applicant on November 14, 2018.
- Third revised development plans received January 22, 2019.
 - Incompleteness letter to applicant on February 12, 2019.
 - Comment letter sent to applicant on February 20, 2019.

Project Map:



Current Status:

- Waiting for revised submittal.

1. New projects are added to the bottom of the list as they are submitted.

EASTVALE PLANNING: MAJOR PROJECTS SUMMARY

November 13, 2019

Highlighted Text = Updated Information¹

Map ID: 23

Project: Goodman Commerce Center CR-11 – Multi-Tenant Building

Project No. PLN18-20042

Project Location: Southeast corner of Hamner Avenue and Cantu-Galleano Ranch Road and west of Goodman Way, Parcel 10 of Parcel Map 37208; (Assessor's Parcel Number 160-020-078)

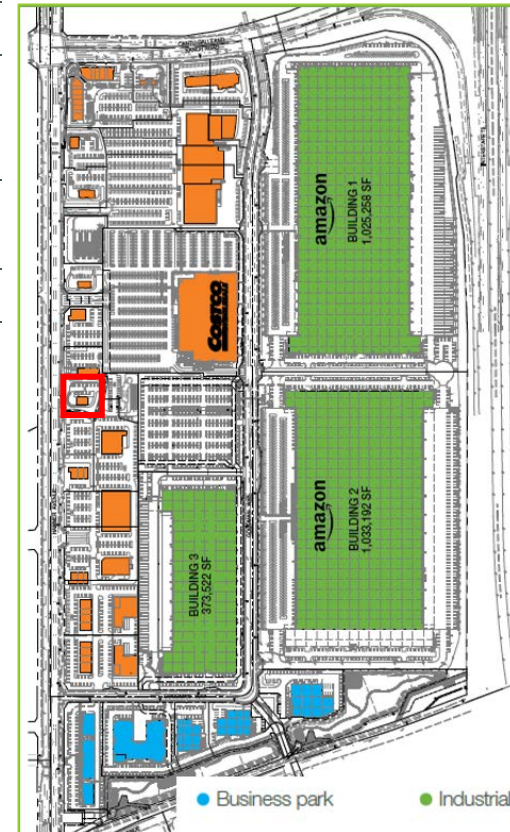
Project Description: Major Development Review for a new 6,000 square-foot multi-tenant retail building on a 37,250 square-foot site.

Planner: Aaron Lobliner

Notes:

- Received application on July 26, 2018.
- Building plans received November 20, 2018. Comments provided to applicant December 27, 2018.
- Approved by Planning Commission on November 8, 2018.
- Landscape plans approved on January 21, 2019.
- Revised construction plans approved on February 19, 2019.

Project Map:



Current Status:

- Approved by Planning Commission.
- Construction plans approved.

1. New projects are added to the bottom of the list as they are submitted.

EASTVALE PLANNING: MAJOR PROJECTS SUMMARY

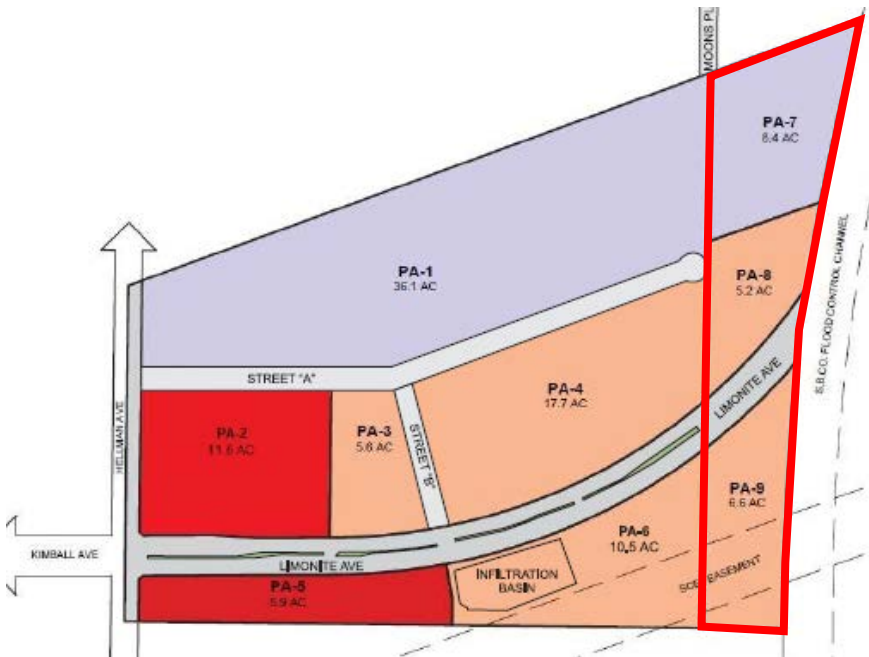
November 13, 2019

Highlighted Text = Updated Information¹

Map ID: 24

Project:	Howard Industrial at The Ranch (Rodriguez Site)
Project No.:	PLN18-20050
Project Location:	East end of Limonite Avenue (The Ranch Planning Area 7, 8 and 9); Assessor's Parcel Numbers: 144-010-009 and 144-010-004, and 144-010-005
Project Description:	<ul style="list-style-type: none"> Major Development Review for development of a 21-acre site for light industrial uses located in Planning Areas 7 and 9 of The Ranch Specific Plan Tentative Parcel Map to subdivide the project site. Diminishment of Agricultural Preserve & Williamson Act Cancellation for the project site.
Planner:	Aaron Lobliner

Project Map:



- Notes:**
- Agricultural Preservation & Williamson Act Cancellation submitted on September 4, 2018.
 - Major Development Review and Tentative Parcel Map received on October 24, 2018.
 - Approved by Planning Commission for Major Development Review and Tentative Parcel Map on December 19, 2018.
 - Approved by City Council for diminishment of the agricultural preserve and tentative cancellation of the Williamson Act contract on February 13, 2019
 - Staff is in discussion with a new owner regarding design changes.

Current Status:

- Waiting for grading and construction plan submittal.
- Final Cancellation of Williamson Act Contract approved by City Council July 24, 2019.

1. New projects are added to the bottom of the list as they are submitted.

EASTVALE PLANNING: MAJOR PROJECTS SUMMARY

November 13, 2019

Highlighted Text = Updated Information¹

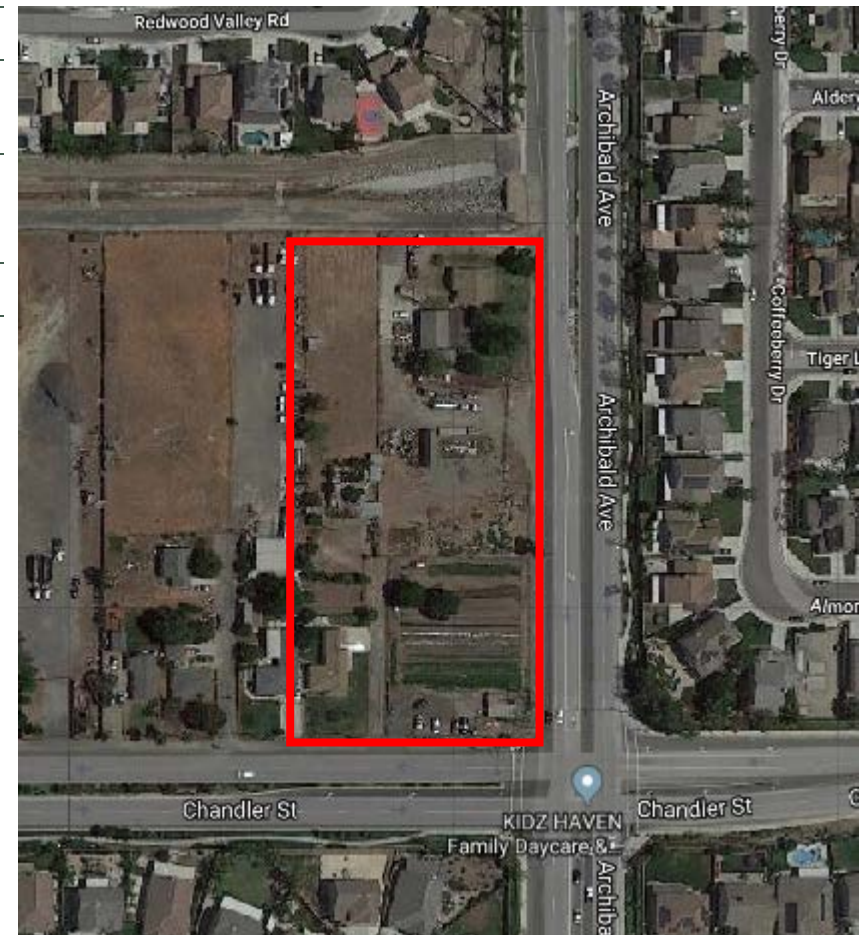
Map ID: 25

Project:	Retail Center Archibald and Chandler
Project No.	PLN19-20000
Project Location:	Northwest corner of Archibald and Chandler; (Accessor Parcel Numbers: 144-130-004, 144-130-011, 144-130-012, 144-130-013)
Project Description:	A 2.71-acre mixed use commercial development comprised of a convenience store/ gas station/ carwash, a drive-through restaurant, and an undeveloped pad to be submitted at a later date.
Planner:	Emily Elliott

Notes:

- Received application on January 3, 2019.
- Incompleteness letter mailed on January 17, 2019.
- Public information meeting was held at city hall on February 20, 2019.
- Comment letter sent out to applicant on February 21, 2019.
- Meeting with applicant occurred on March 14, 2019.
- Applicant is revising plan, not yet resubmitted.

Project Map:



Current Status:

- Waiting for revised submittal.

1. New projects are added to the bottom of the list as they are submitted.

EASTVALE PLANNING: MAJOR PROJECTS SUMMARY

November 13, 2019

Highlighted Text = Updated Information¹

Map ID: 26

Project:	The Campus Self-Storage Facility DR & CUP
Project No.:	PLN19-20001
Project Location:	West side of Archibald Avenue and South of Providence Way; (Accessor Parcel Number: 144-010-063)
Project Description:	Major Development Review and Conditional Use Permit for development and operation of a 4-story, self-storage facility in the front portion of The Campus development.
Planner:	Aaron Lobliner

Notes:

- Received application on January 22, 2019.
- This project would replace an earlier approval for a two-story office building at this location.
- Application incompleteness letter sent on February 11, 2019.
- Comment letter sent on February 25, 2019.
- Second resubmittal received on February 27, 2019.
- 2nd incomplete application letter sent on March 13, 2019.
- 3rd resubmittal received on May 23, 2019.
- 4th submittal received on June 7, 2019.
- Planning Commission consideration and approval on July 17, 2019.

Project Map:



Current Status:

- Approved by Planning Commission.

1. New projects are added to the bottom of the list as they are submitted.

EASTVALE PLANNING: MAJOR PROJECTS SUMMARY

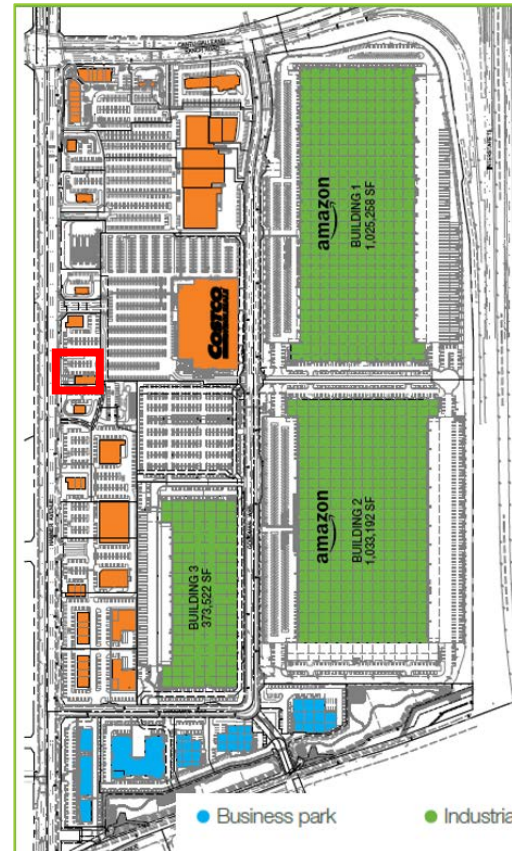
November 13, 2019

Highlighted Text = Updated Information¹

Map ID: 27

Project:	Chick-fil-A at Goodman Commerce Center
Project No.	PLN19-20006
Project Location:	5080 Hamner Avenue (Accessor Parcel Numbers: 160-020-079) (Goodman CR-10)
Project Description:	Major Development Review and Conditional Use Permit for development and operation of a 4,833 sq. ft. restaurant with two drive-through lanes
Planner:	Aaron Lobliner

Project Map:



Notes:

- Received application on February 19, 2019.
- Incompleteness letter sent on March 13, 2019.
- Comment letter sent on March 25, 2019.
- Meeting with applicant on April 3, 2019 to discuss comment letter.
- Revised plans received on April 12th and April 29th.
- Planning Commission approved on May 15, 2019.

Current Status:

- Construction plans under review.

1. New projects are added to the bottom of the list as they are submitted.

EASTVALE PLANNING: MAJOR PROJECTS SUMMARY

November 13, 2019

Highlighted Text = Updated Information¹

Map ID: 28

Project:	The Campus 7-Eleven Gas Station DR, CUP's
Project No.	PLN19-20008
Project Location:	The Campus (West side of Archibald and South of Providence Way); (Accessor Parcel Numbers: 144-010-063)
Project Description:	Major Development Review and Conditional Use Permit for development and operation of a convenience store, gas station and carwash.
Planner:	Aaron Lobliner/Aaron Lobliner

Project Map:



- Notes:**
- Received application on February 26, 2019.
 - Incomplete letter sent on March 14, 2019.
 - Comment letter sent on March 22, 2019.
 - 2nd resubmittal received on May 17, 2019.
 - 3rd submittal received on June 7, 2019.
 - Planning Commission consideration and approval on July 17, 2019.

Current Status:

- Approved by Planning Commission.

1. New projects are added to the bottom of the list as they are submitted.

EASTVALE PLANNING: MAJOR PROJECTS SUMMARY

November 13, 2019

Highlighted Text = Updated Information¹

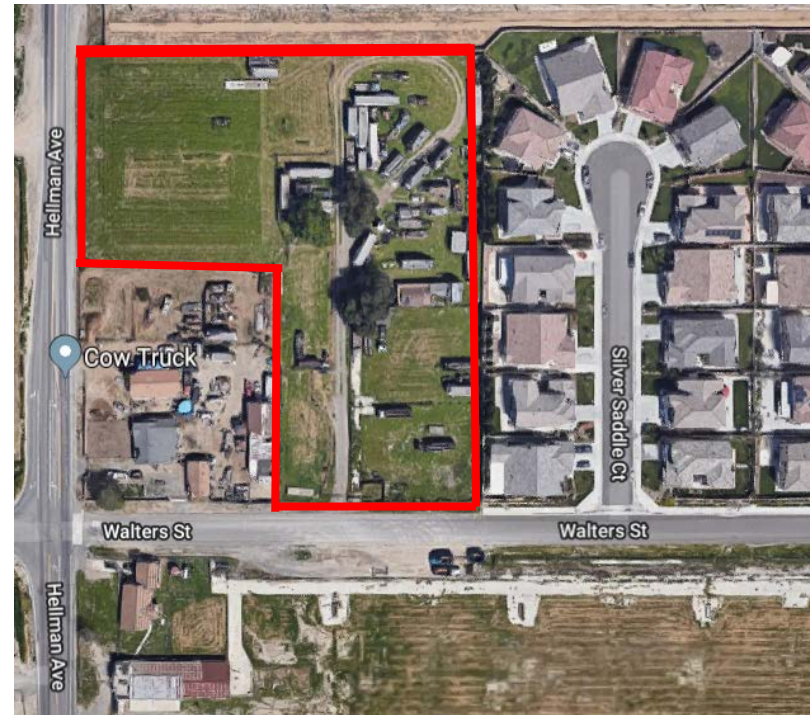
Map ID: 29

Project:	Hindu Temple at Hellman and Walters Pre-App
Project No.	PLN19-20017
Project Location:	7500 Hellman Avenue (Northwest of Hellman and Walters); (Accessor Parcel Numbers: 144-070-016; 144-070-017; 144-070-018; 144-070-020)
Project Description:	Pre-Application for a Hindu Temple consisting of multiple buildings with a combined total square footage of 40,135-square feet.
Planner:	Aaron Lobliner

Notes:

- Received application on May 9, 2019.
- Comment letter sent on June 6, 2019.
- Meeting with Applicant on July 2, 2019 to discuss comment letter.

Project Map:



Status:

- Waiting for formal application.

1. New projects are added to the bottom of the list as they are submitted.

EASTVALE PLANNING: MAJOR PROJECTS SUMMARY

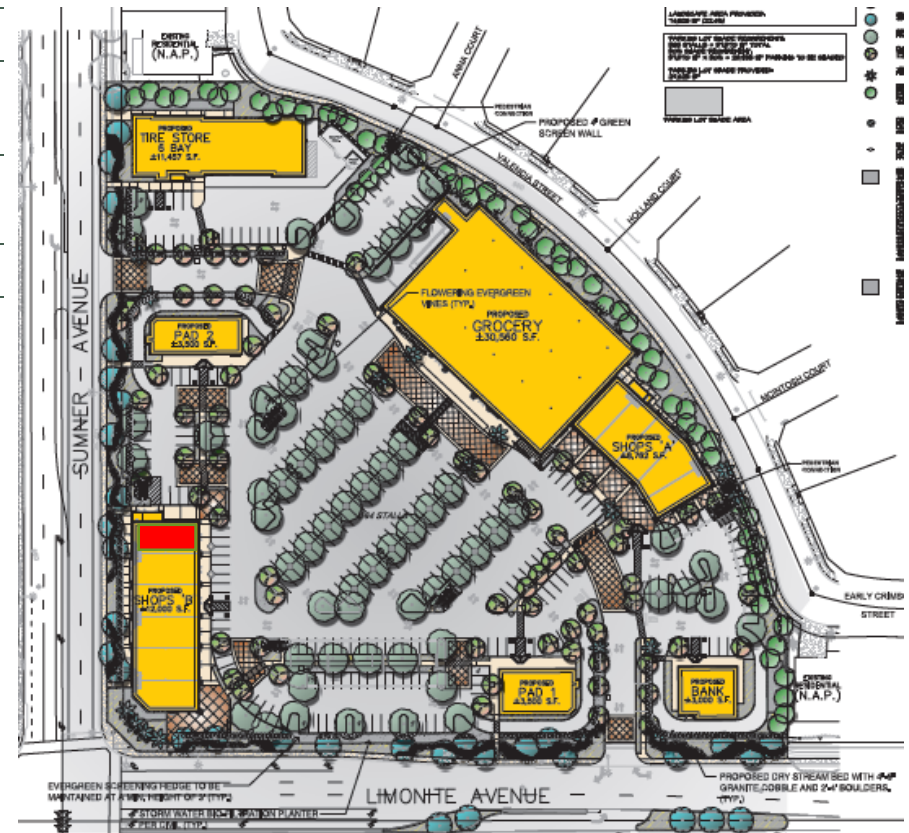
November 13, 2019

Highlighted Text = Updated Information¹

Map ID: 30

Project:	Eastvale Marketplace Big Wok Alcohol CUP
Project No.	PLN19-20018
Project Location:	Eastvale Marketplace 13394 Limonite Avenue Suite 100 (Accessor Parcel Numbers: 164-030-039)
Project Description:	Conditional Use Permit to allow the sales of beer and wine for on-site consumption.
Planner:	Aaron Lobliner

Project Map:



Current Status:

- Approval Letter and Conditions of Approval provided to applicant for signature on 10/1/2019 – Signature Received 10/2/2019
- Provided Signed Conditions of Approval to Alcohol Beverage Control.

1. New projects are added to the bottom of the list as they are submitted.

EASTVALE PLANNING: MAJOR PROJECTS SUMMARY

November 13, 2019

Highlighted Text = Updated Information¹

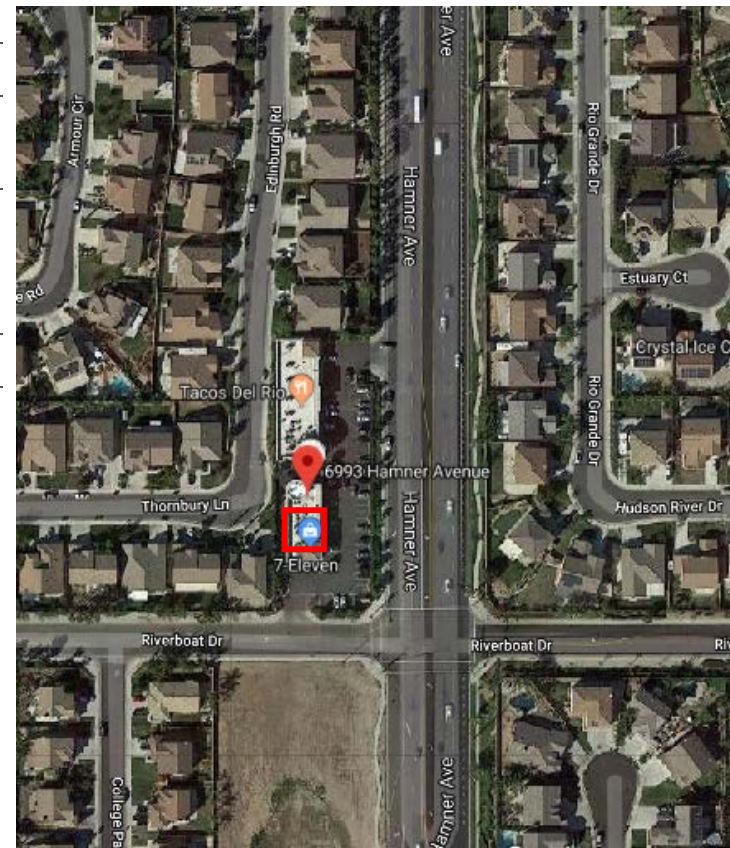
Map ID: 31

Project:	Existing 7-Eleven on Hamner and Riverboat Alcohol CUP Amendment Appeal
Project No.	PLN19-20020
Project Location:	6993 Hamner Ave Suite B-1; Accessor Parcel Numbers: 164-520-017
Project Description:	Appeal Planning Commission's denial for an Amendment to Conditional Use permit No. CUP0340, to allow the sales of distilled spirits (hard liquor) in addition to beer and wine (Type 21) at the existing 7-11 convenience store.
Planner:	Aaron Lobliner

Notes:

- Received application on May 28, 2019.
- On June 26, 2019 the City Council approved the appeal.

Project Map:



Current Status:

- Approved

1. New projects are added to the bottom of the list as they are submitted.

EASTVALE PLANNING: MAJOR PROJECTS SUMMARY

November 13, 2019

Highlighted Text = Updated Information¹

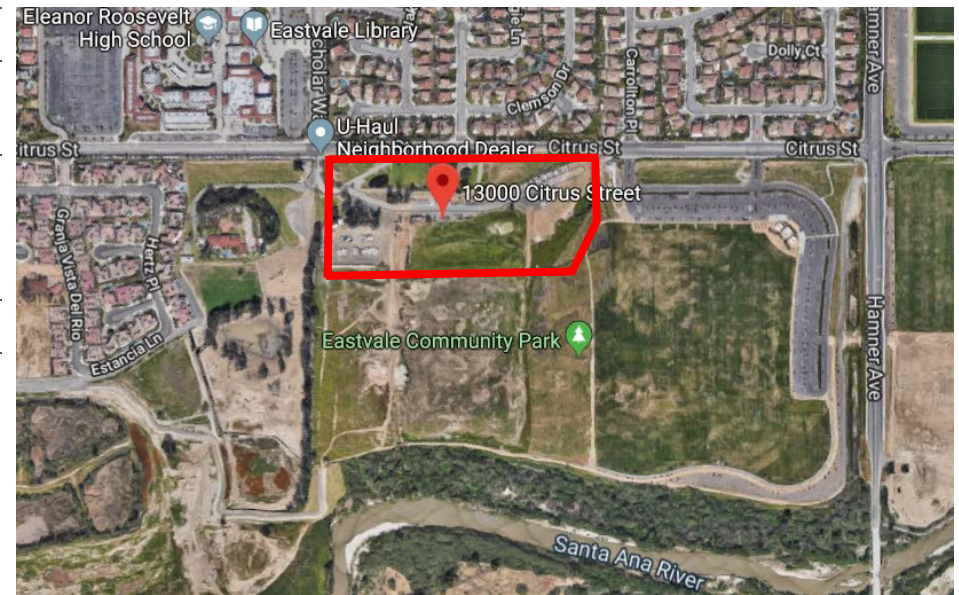
Map ID: 32

Project:	Van Leeuwen COZ, GPA, ZCA
Project No.	PLN19-20021
Project Location:	13000 Citrus Street; Accessor Parcel Numbers: 152-050-050
Project Description:	General Plan Amendment from low density to high density and Change of Zone from A-2 to R-3 with a senior housing overlay and zone text amendment to create a senior housing overlay.
Planner:	Aaron Lobliner

Notes:

- Received application on May 30, 2019.
- Project presented to Planning Commission for consideration and recommendation to City Council on July 17, 2019. Planning Commission voted 5-0 recommending approval to City Council.
- July 17, 2019, Planning Commission recommended approval to City Council.

Project Map:



Current Status:

- Project presented to City Council for consideration on September 11, 2019. City Council voted 4-0 approving the project.

1. New projects are added to the bottom of the list as they are submitted.

EASTVALE PLANNING: MAJOR PROJECTS SUMMARY

November 13, 2019

Highlighted Text = Updated Information¹

Map ID: 33

Project:	Hotel Suites at Hamner Place
Project No.	PLN19-20023
Project Location:	Southeast corner of Hamner Avenue and Schleisman Road; Accessor Parcel Numbers: 152-050-050
Project Description:	A Major Development Review for a hotel and a banquet facility and a Conditional Use Permit for the sale of alcohol for on-site consumption.
Planner:	Gina Gibson-Williams

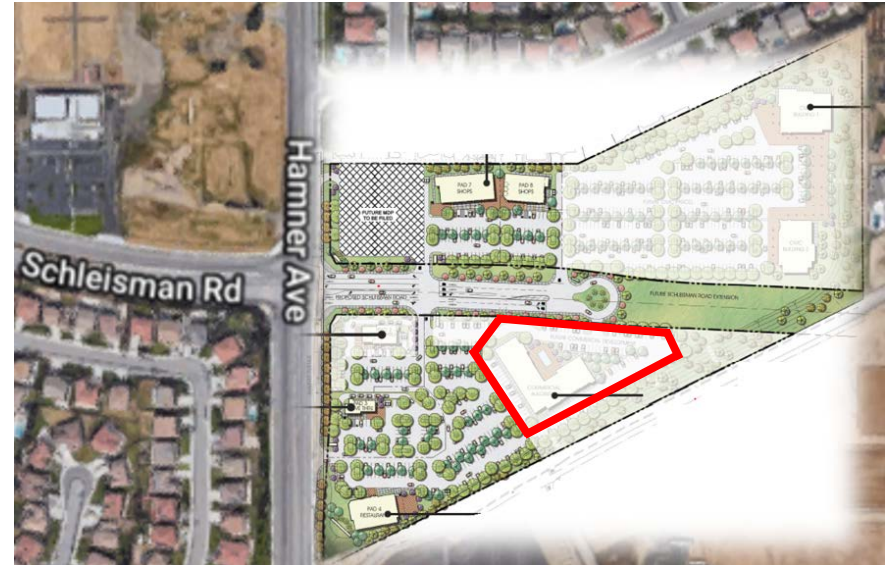
Notes:

- Received application on June 6, 2019.

See the following project for more information:

- Map ID #11 : PLN17-20015: Hamner Place (former Polopolus Property)

Project Map:



Current Status:

- Approved by Planning Commission on June 19, 2019.

1. New projects are added to the bottom of the list as they are submitted.

EASTVALE PLANNING: MAJOR PROJECTS SUMMARY

November 13, 2019

Highlighted Text = Updated Information¹

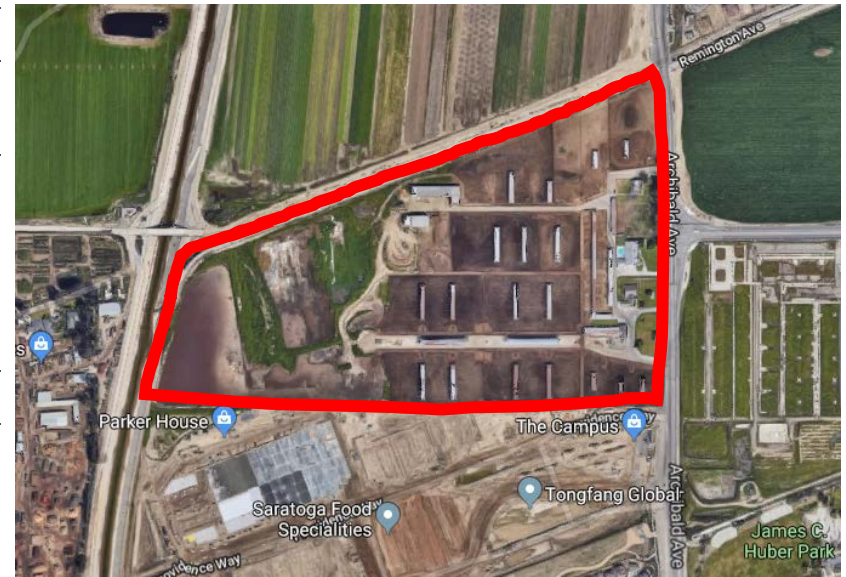
Map ID: 34

Project:	The Homestead
Project No.:	PLN19-20026
Project Location:	West of Archibald Avenue at the westerly terminus of Limonite Avenue; Accessor Parcel Numbers: 144-010-015, -018, -020, -023, -032.
Project Description:	<ul style="list-style-type: none">Major Development Review for construction of seven(7) light industrial/ warehouse buildingsChange of Zone from A-2 to I-PTentative Parcel Map for subdivision of the site into seven(7) parcelsVariance from the standard landscape shading requirements.
Planner:	Gina Gibson-Williams/Aaron Lobliner

Notes:

- Received application on June 25, 2019.
- Submittal received July 2, 2019; routed to other departments for review.
- Request for proposal of an Environment Impact Report (EIR) sent on July 3, 2019. Proposals due on July 24, 2019.

Project Map:



Current Status

- Under Review

1. New projects are added to the bottom of the list as they are submitted.

EASTVALE PLANNING: MAJOR PROJECTS SUMMARY

November 13, 2019

Highlighted Text = Updated Information¹

Map ID: 35

Project:	The Campus 7-Eleven Gas Station DR Appeal
Project No.:	PLN19-20029
Project Location:	The Campus (West side of Archibald and South of Providence Way); (Accessor Parcel Numbers: 144-010-063)
Project Description:	<ul style="list-style-type: none">▪ Appeal Planning Commission's approval of a Major Development Review and Conditional Use Permit for development and operation of a convenience store, gas station and carwash.
Planner:	Aaron Lobliner

Notes:

- Received application on July 29, 2019.

Project Map:



Current Status:

- City Council consideration in August 28, 2019.
- City Council denied the appeal and recommended new conditions on August 28, 2019.

1. New projects are added to the bottom of the list as they are submitted.

EASTVALE PLANNING: MAJOR PROJECTS SUMMARY

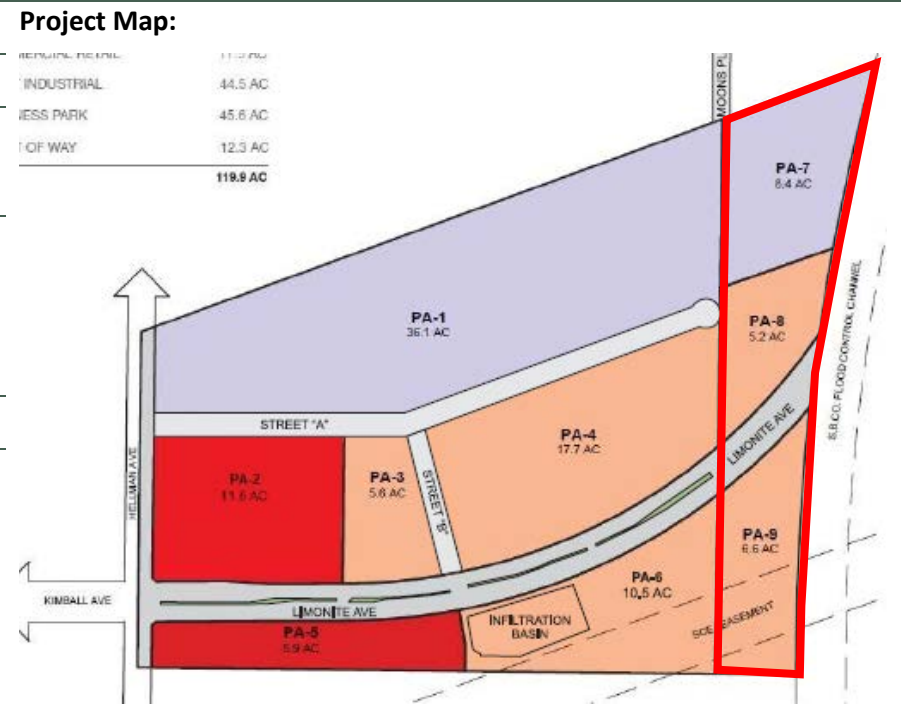
November 13, 2019

Highlighted Text = Updated Information¹

Map ID: 36

Project:	The Ranch by Transwestern (Rodriguez Site)
Project No.:	PLN19-20034
Project Location:	East end of Limonite Avenue (The Ranch Planning Area 7, 8 and 9); Assessor's Parcel Numbers: 144-010-009 and 144-010-004, and 144-010-005
Project Description:	<ul style="list-style-type: none"> Major Development Review (DR) and an Amendment to the Tentative Parcel Map (TPM) to construct 2 light industrial warehouses on the Rodriguez Site (Planning Area 7, 8, and 9) located on the southeast corner of Moon Place and Remington Avenue.
Planner:	Aaron Lobliner

Notes:	<ul style="list-style-type: none"> Received application on September 3, 2019. Routed to other departments for review.
---------------	---



Current Status:	<ul style="list-style-type: none"> Incompleteness letter provided to applicant on October 8, 2019
------------------------	--

1. New projects are added to the bottom of the list as they are submitted.

EASTVALE PLANNING: MAJOR PROJECTS SUMMARY

November 13, 2019

Highlighted Text = Updated Information¹

Map ID: 37

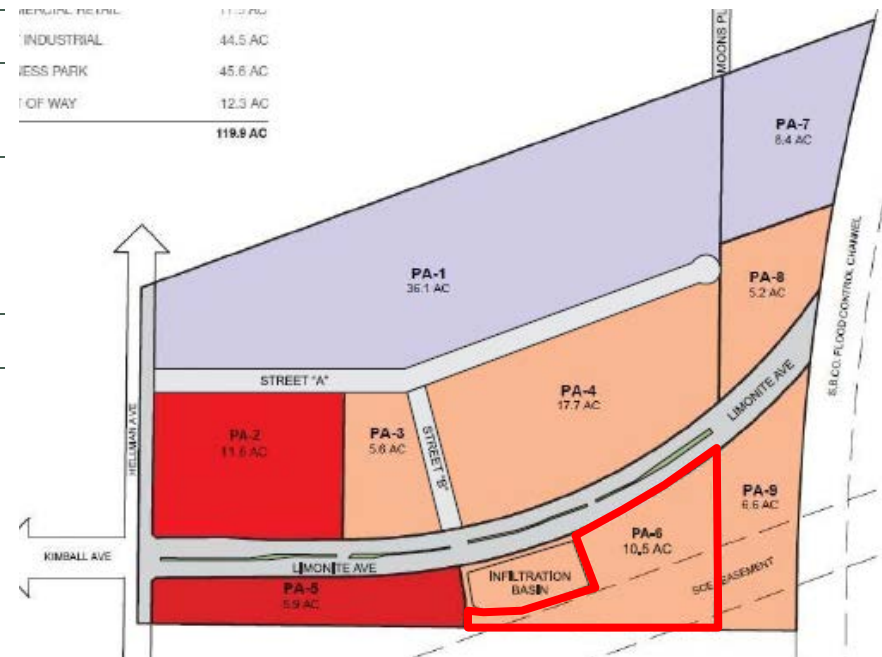
Project:	The Ranch by Summit Development (Parcel 14) Pre-Application
Project No.	PLN19-20035
Project Location:	East end of Limonite Avenue (The Ranch Planning Area 6); Assessor's Parcel Numbers: 144-010-058
Project Description:	<ul style="list-style-type: none"> A Pre-Application for a 61,000 square foot light industrial building on 4.36 acres of Parcel 14 on The Ranch. The building will be located in Planning Area 6 of The Ranch Specific Plan.
Planner:	Aaron Lobliner

Notes:

- Received application on September 12, 2019.
- Routed to other departments for review.

Project Map:

RESIDENT DEVELOPMENT	11.0 AC
INDUSTRIAL	44.5 AC
RECREATION PARK	45.6 AC
RIGHT OF WAY	12.3 AC
TOTAL	119.8 AC



Current Status:

- Comments provided to applicant 10/17/19

1. New projects are added to the bottom of the list as they are submitted.

EASTVALE PLANNING: MAJOR PROJECTS SUMMARY

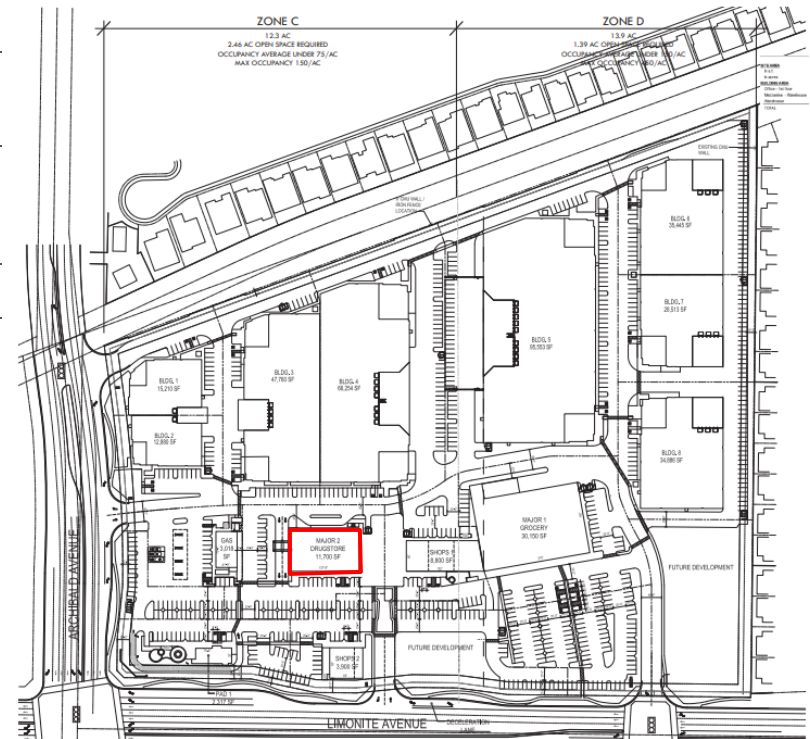
November 13, 2019

Highlighted Text = Updated Information¹

Map ID: 38

Project:	The Merge Retail (Major 2) Minor Development Review
Project No.:	PLN19-20041
Project Location:	Northeast corner of Limonite Avenue and Archibald Avenue; APN: 164-010-019-6
Project Description:	Minor Development Review to replace the previously approved pharmacy with a drive through to two (2) retail buildings.
Planner:	Aaron Lobliner
Notes:	Received application on October 28, 2019.

Project Map:



Current Status:

- Application has been deemed incomplete.

1. New projects are added to the bottom of the list as they are submitted.

EASTVALE PLANNING: MAJOR PROJECTS SUMMARY

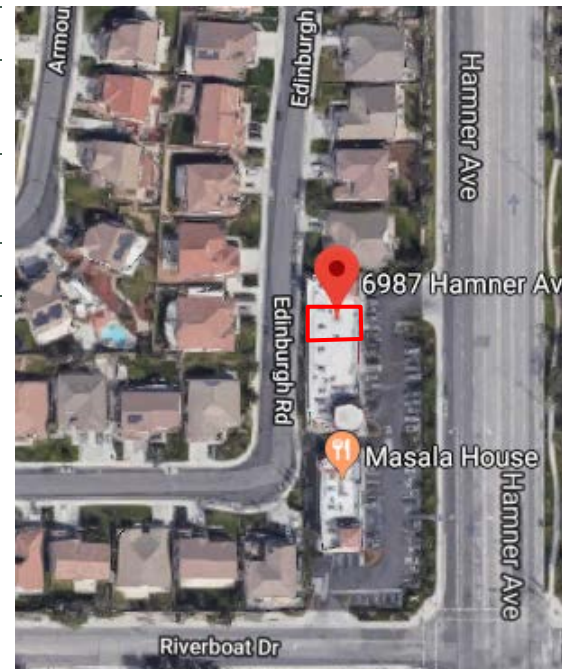
November 13, 2019

Highlighted Text = Updated Information¹

Map ID: 39

Project:	Jono's Simple Japanese Alcohol CUP
Project No.:	PLN19-20041
Project Location:	6987 Hamner Ave Suite #7 (NWC of Riverboat Dr. and Hamner Ave.) ; APN: 164- 520-017
Project Description:	▪ Conditional Use Permit for alcohol sales at Jono's Simple Japanese Food for on-site consumption.
Planner:	Allen Lim
Notes:	▪ Received application on October 23, 2019.

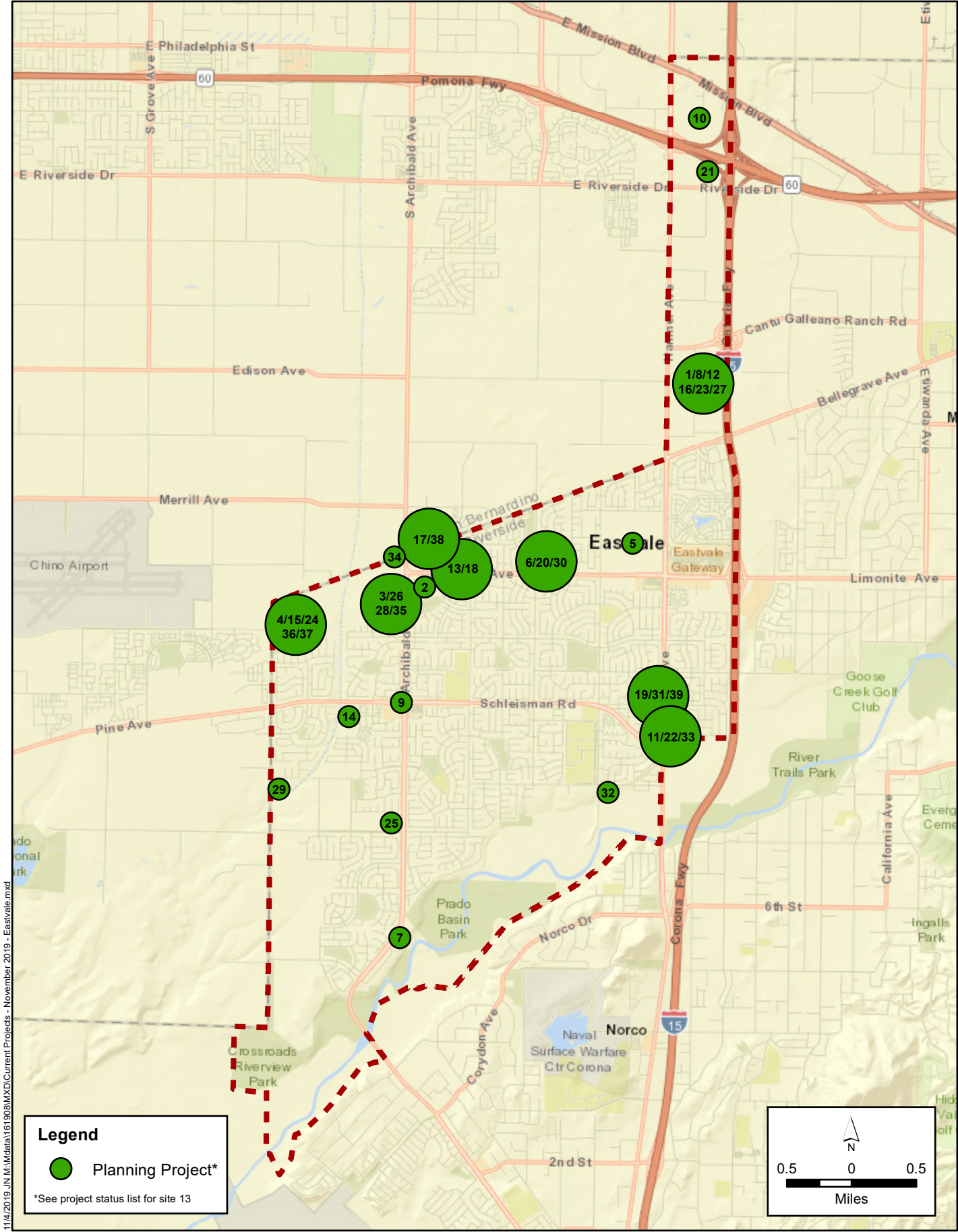
Project Map:



Current Status:

- Application incompleteness letter provided to applicant 10/30/19
- Requested information received on 10/30/19
- Routed to other departments for review on 10/31/19

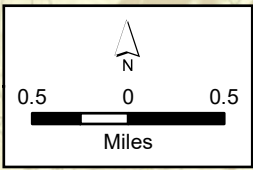
1. New projects are added to the bottom of the list as they are submitted.



Legend

- Planning Project*

*See project status list for site 13



11/4/2019 JN.M:\Data\161908\MXD\Current Projects - November 2019 - Eastvale.mxd



AGENDA STAFF REPORT

Public Safety Commission Meeting

Consent Calendar

Agenda Item No. 6.6

December 3, 2019

Crime Statistics – September

Prepared By: Eva Terekhova, Emergency Management Specialist

Recommended Action(s)

Receive and file the Eastvale Crime Statistics for September.

Summary

In May 2017, City Council directed staff to coordinate with the Riverside County Sheriff's Department to request and obtain monthly crime statistics for the City of Eastvale. The primary intent of the request was to determine appropriate staffing levels during the City's contract negotiations with the Sheriff's Department. Over several weeks, the city manager and staff worked collaboratively with Riverside County Sheriff's Department administration and management to obtain crime statistics that could be shared with the public on a regular basis.

Upon receiving the data, the Riverside County Sheriff's Department advised staff that the data provided would be reflective of the previous month, or thirty days behind the current month; and that the report would need to include a disclaimer identifying the data as preliminary and raw.

At the July 26, 2017 meeting, City Council recommended that staff add columns reflective of felony and misdemeanor arrests. During the September 26, 2017 meeting, City Council recommended staff add traffic violations/citations data and the total calls for service broken down per month. All additions are reflected in the Crime Statistics attached. Crime Statistics that were released in the time that passed since the last meeting of this Commission are attached.

Background

Not Applicable.

Strategic Plan Action – Priority Level: 1A | Target #: 2 | Goal #: 4

Explore implementation of traffic enforcement and education opportunities and grants (e.g. education regarding intoxicated/distracted drivers); and provide public information on crime statistics

[Return to Agenda](#)

Fiscal Impact

None.

Prior City Council/Commission Action

July 25, 2017: Approved by the Public Safety Commission

September 26, 2017: Approved by City Council

Attachment(s)

1. September 2019 Crime Statistics



City of Eastvale Crime Statistics September 2019



VIOLENT CRIME STATISTICS

VIOLENT CRIMES

*ESTIMATED 2019 POPULATION = 66,078

	SEP 2019	CRIME RATE PER 1000	SEP 2018	CRIME RATE PER 1000	AUG 2019	CRIME RATE PER 1000	JULY 2019	CRIME RATE PER 1000	JUNE 2019	CRIME RATE PER 1000	YTD 2019	YEAR END TOTAL 2018	YEAR END TOTAL 2017
HOMICIDE	0	0	0	0	0	0	0	0	0	0	0	1	0
RAPE	0	0	0	0	0	0	0	0	0	0	0	5	0
ROBBERY	0	0	1	0.02	8	0.12	0	0	4	0.06	19	27	23
AGGRAVATED ASSAULT+	7	0.11	2	0.03	6	0.09	3	0.05	1	0.02	31	27	30
ARSON	0	0	0	0	0	0	0	0	0	0	0	0	2
TOTAL	7	N/A	3	N/A	14	N/A	3	N/A	5	N/A	50	60	55

NON VIOLENT CRIME STATISTICS

PROPERTY CRIMES

*ESTIMATED 2019 POPULATION = 66,078

	SEP 2019	CRIME RATE PER 1000	SEP 2018	CRIME RATE PER 1000	AUG 2019	CRIME RATE PER 1000	JULY 2019	CRIME RATE PER 1000	JUNE 2019	CRIME RATE PER 1000	YTD 2019	YEAR END TOTAL 2018	YEAR END TOTAL 2017
BURGLARY	16	0.24	11	0.17	13	0.20	10	0.15	4	0.06	106	139	211
VEHICLE THEFT	7	0.11	21	0.32	9	0.14	13	0.20	10	0.15	88	130	171
LARCENY THEFT	70	1.06	51	0.79	43	0.65	51	0.77	60	0.91	462	667	939
MAIL THEFT	7	0.11	6	0.09	4	0.06	5	0.08	1	0.02	38	72	303
INJURY TC'S	18	0.27	25	0.39	25	0.38	12	0.18	6	0.09	134	215	138
FELONY ARREST	9	0.14	8	0.12	18	0.27	12	0.18	19	0.29	135	166	166
MISDEMEANOR ARREST	39	0.59	25	0.39	24	0.36	31	0.47	39	0.59	266	383	270
TRAFFIC CITATIONS	270	4.09	309	4.76	353	5.34	212	3.21	285	4.31	2,625	3,299	5,191
TOTAL	436	N/A	456	N/A	489	N/A	346	N/A	424	N/A	3,854	5,071	7,358

TOTAL CALLS FOR SERVICE/FILE #S GENERATED

YEAR: 2019												POPULATION: 66,078												TOTAL YTD: 18,313											
JAN	FEB	MAR	APR	MAY	JUN	JUL	AUG	SEP	OCT	NOV	DEC	JAN	FEB	MAR	APR	MAY	JUN	JUL	AUG	SEP	OCT	NOV	DEC	JAN	FEB	MAR	APR	MAY	JUN	JUL	AUG	SEP	OCT	NOV	DEC
1,848	1,713	2,155	2,097	2,104	2,036	1,967	2,298	2,095				1,848	1,713	2,155	2,097	2,104	2,036	1,967	2,298	2,095				1,848	1,713	2,155	2,097	2,104	2,036	1,967	2,298	2,095			

YEAR	POPULATION	TOTAL CALLS FOR SERVICE/FILE #S
2018	64,855*	28,383
2017	64,613*	32,295
2016	63,214*	31,234
2015	60,881*	26,556
2014	59,421*	28,641
2013	57,478*	28,982

LEGEND

All data is preliminary, pending year end verification by CA-DOJ and FBI; These are raw statistics based on the information currently in the Records Management System (RMS).
 * Source of population data: State of California, Department of Finance
 ** Total calls for service/file #s generated encompasses ALL call types inclusive of the ones listed and not listed on this chart.
 *** Year to Date (YTD) is calendar year



AGENDA STAFF REPORT

Public Safety Commission Meeting

Consent Calendar

Agenda Item No. 7.1

December 3, 2019

Automatic License Plate Reader (ALPR) Update

Prepared By: Stephanie Vasquez, Deputy City Clerk

Recommended Action(s)

Receive and file the Automatic License Plate Reader Update.

Summary

Automated License Plate Reader (ALPR) systems automatically capture vehicles' license plate information via fixed and/or mobile cameras, compare the plate number to one or more databases (e.g. Stolen Vehicles; Warrants; Terrorism Watch List; Amber Alerts; etc.) available to law enforcement agencies, and alert law enforcement personnel, within seconds, when a vehicle of interest has been observed. It automates a tedious, manual process that officers complete in their daily operations, and vastly improves the efficiency and effectiveness of identifying wanted vehicles and persons among the thousands they observe during routine patrol.

December 18, 2018, the Public Safety Commission provided recommendations for ALPR Camera locations within the City of Eastvale. Since then cameras have been installed and have been utilized.

Background

None.

Strategic Plan Action – Priority Level: 3 | Target #: 2 | Goal #: 2

Implement Public Safety Technology.

Fiscal Impact

Not Applicable.

Prior City Council/Commission Action

Not Applicable.

Attachment(s)

Not Applicable.