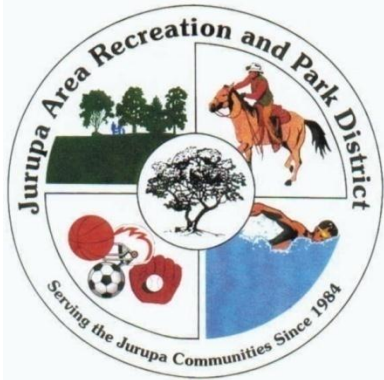


Jurupa Area Recreation and Park District

Parks, Facilities and CFD's
In the City of Eastvale

**Parks
Make
Life
Better!**



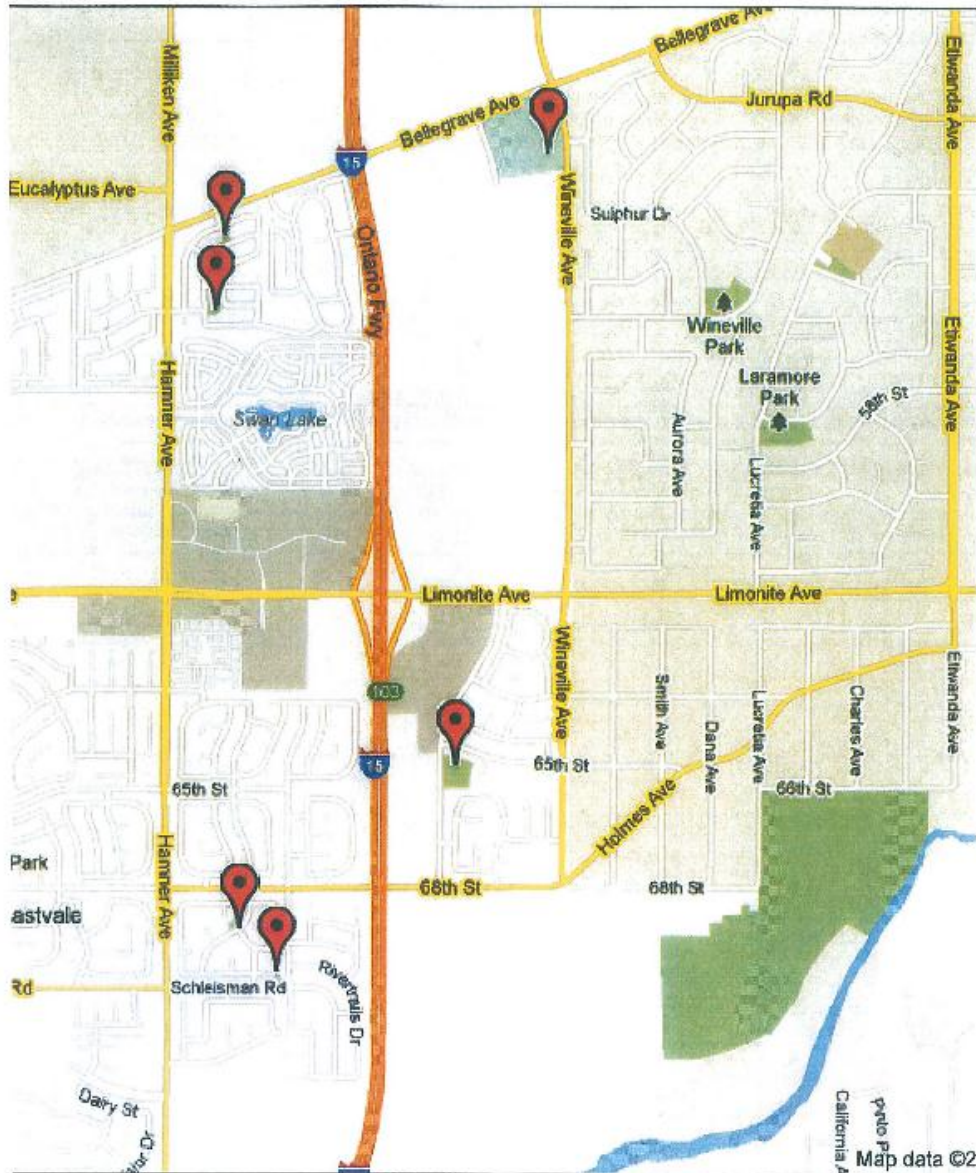


Overview of Presentation

- **4 Eastvale Parks and 2 Jurupa Valley Parks Maintained by CFDs partially within Eastvale**
- **CFD's – Moonriver Park, Delaware Greenbelt, Cambria Park and Harmony Meadows**
- **CFD's Also Fund Maintenance of Vernola Park and Limonite Meadows Park**
- **Revenue Sources/Conditions of Development**
 - **Join/Form CFDs**
 - **Park Development Fees – Developer AB-1600**
 - **Quimby Fees**

The Park and Recreation Promise

- **PLAY:** Outdoor space to play and exercise
- **EXERCISE:** Activities for self-directed and organized recreation
- **NATURE:** Access to serenity and inspiration of nature.
- **POSITIVE PLACES:** Positive alternatives for youth which help lower crime and mischief
- **GATHERING SPACES:** Activities that facilitate social connections, human development, the arts and lifelong learning.
- **FOREVER:** Parks and Recreation will make life better now and in the future!



- Cambria Park 5471 Harmony Dr., Eastvale
- Harmony Park 5641 Treasure Dr. Eastvale
- Moon River Park 6859 Moon River St., Eastvale
- Delaware Greenbelt 6896 Delaware River Dr., Eastvale
- Vernola Park, 5211 Wineville Ave., Jurupa Valley
- Limonite Meadows Park, 6596 Pat's Ranch Road, Jurupa Valley



Cambria Park



Harmony Park



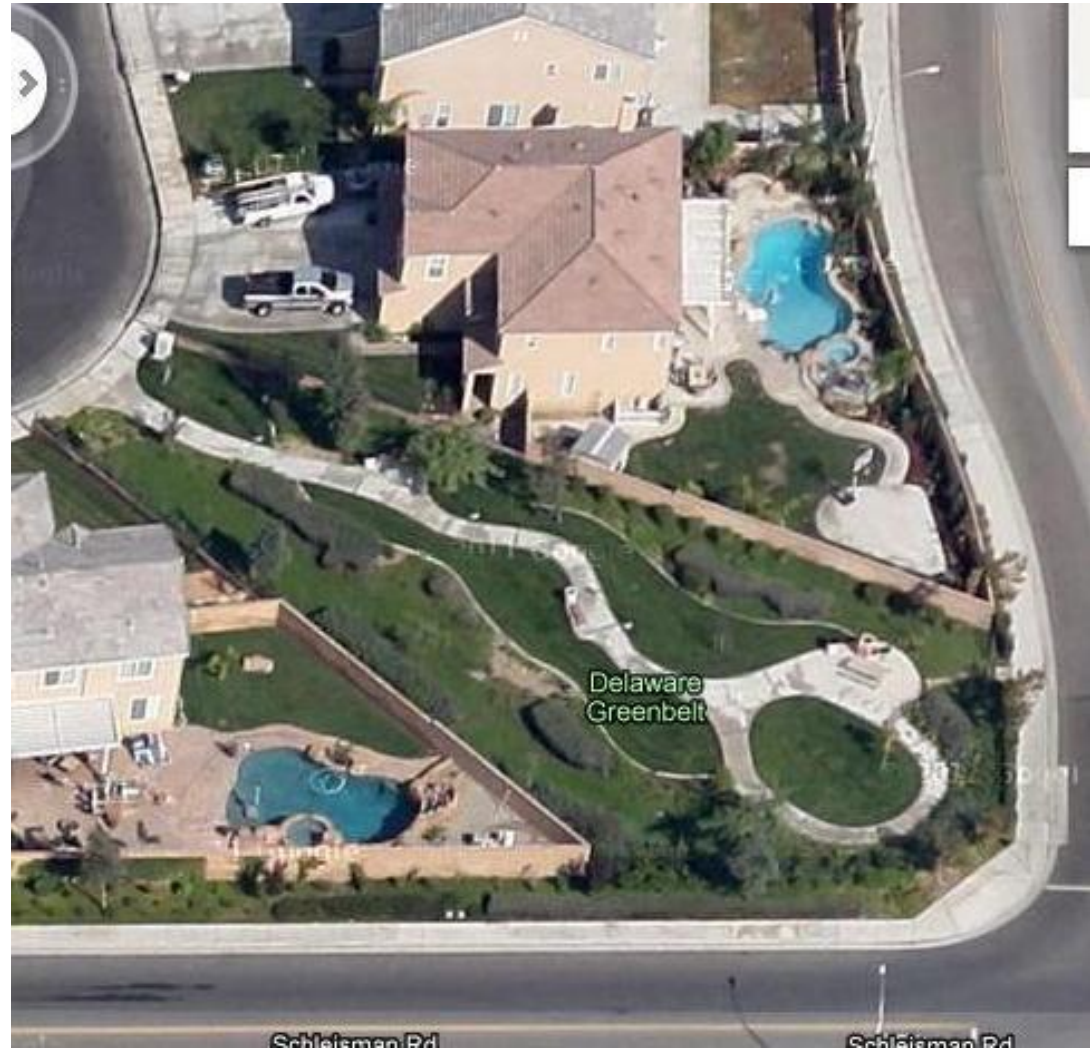


Moonriver Park



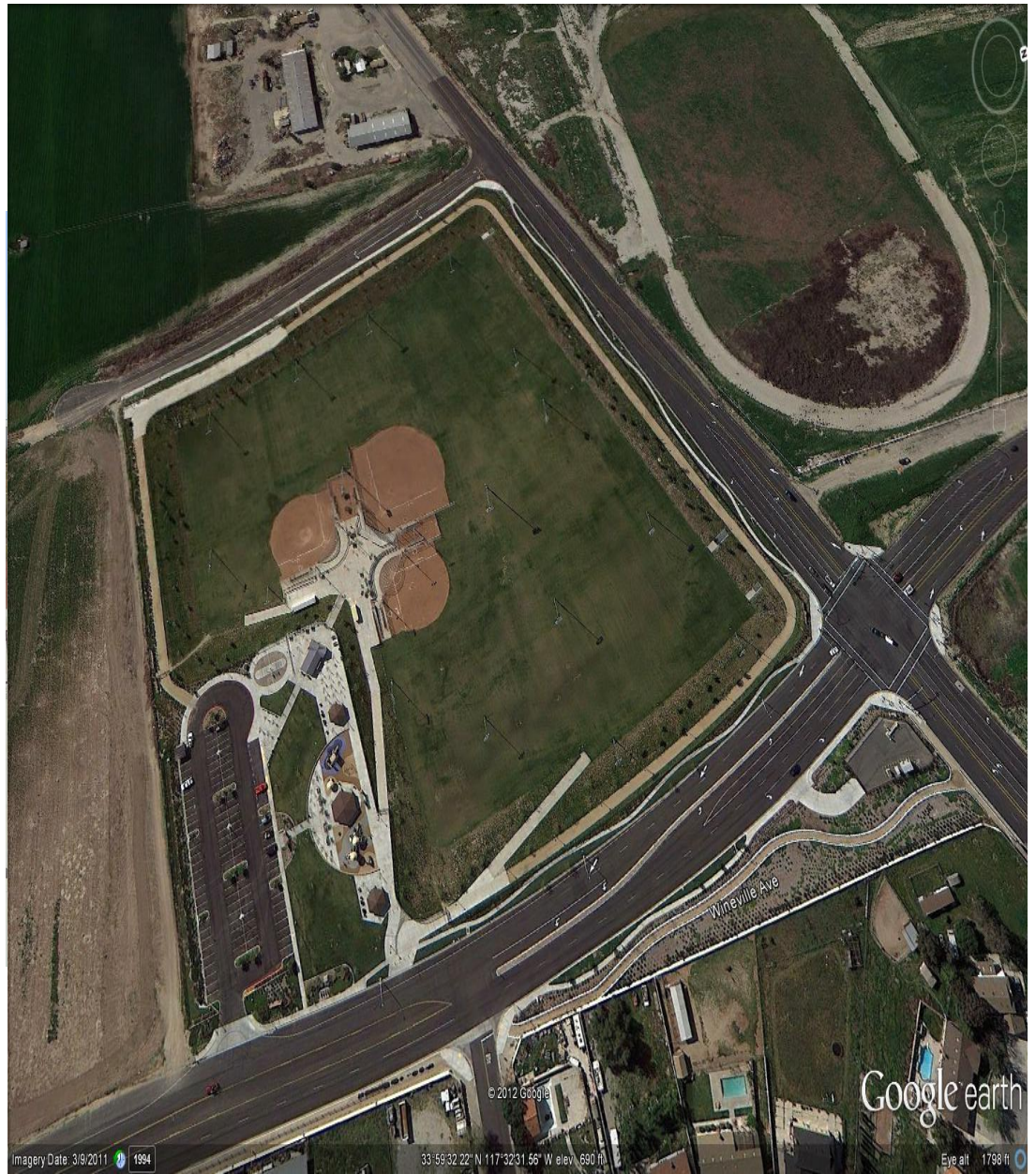


Delaware Greenbelt





Vernola Park





Limonite Meadows





Recreation and Facilities

RECREATION

- Swim Lessons
- Dance Classes
- Zumba
- Open Swim
- Tot Time
- Drum Class
- Guitar Class
- Basketball League
- Youth Sports
- Summer and Winter Break Camps

FACILITIES

- Picnic Shelter Rentals
- Arena use and Rentals
- Two Community Centers
- Pool use and Pool Rentals
- Walking Paths
- Multi-Purpose Trails

Community Special Events

Independence Celebration



Winter
Carnival



Spook-Tacular



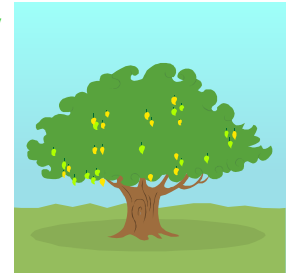
Family Day in
the Park



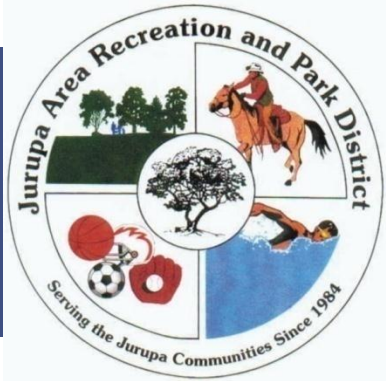
5 K Run



Arbor Day

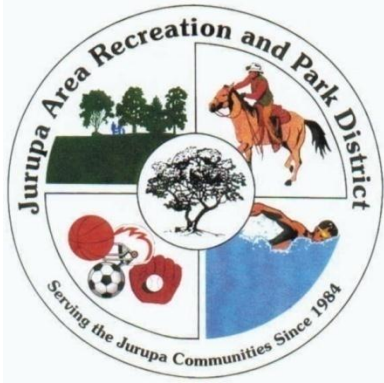


And More just check out www.jarpd.org



JARPD Revenue Sources

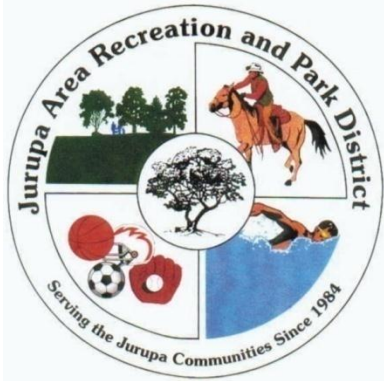
- **Maintenance District**
- **Community Facilities Districts (CFDs)**
- **Developer Fees – AB -1600**
- **Quimby Fees**
- **Conditions of Development**



JARPD Maintenance District and CFDs Summary

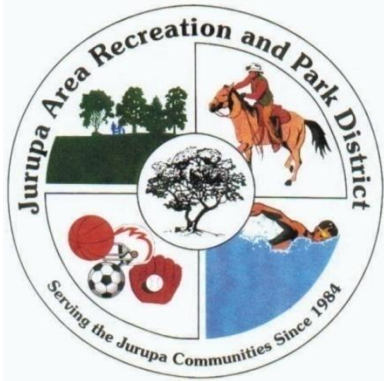
Maintenance District

- District-wide
- Pays for M&O of facilities located throughout the District



JARPD Maintenance District and CFDs Summary

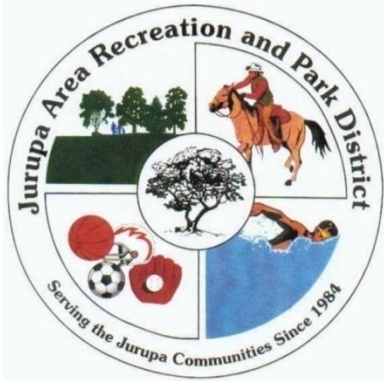
- **Located west of I-15**
- **Includes 160 SF Homes**
- **Pays for Delaware Park and Moonriver Tot Lot and New Parks within JARPD**



JARPD Maintenance District and CFDs Summary

CFD No. 2004-2 (I-15 Corridor)

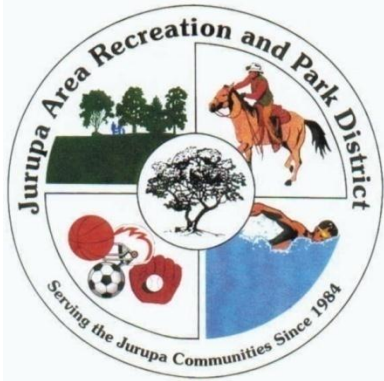
- Located along I-15 (In both Eastvale and Jurupa Valley)
- Includes multiple existing and proposed developments
- Provides funding for M & O of Cambria Park, Harmony Park, Limonite Meadows Park and Vernola Park



JARPD Maintenance District and CFDs Summary

CFD No. 2005-1

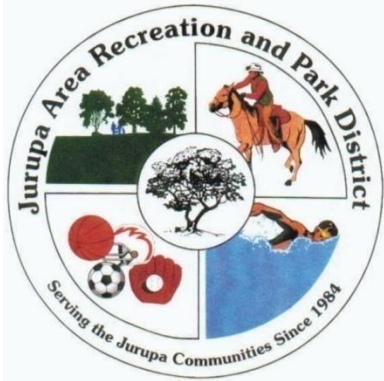
- Located west of I-15
- Includes 309 SF (2008)
- Provides M&O funding for Centennial and Glen Avon. May provide for other facilities.



JARPD Other Revenue Sources

Other Revenue Sources

- Developer Fees – AB -1600
- Quimby Fees



Conditions of Development

Conditions Placed on New Development

- **Currently Included in Maintenance District**
- **Developer Fees – AB -1600**
- **Quimby Fees**
- **Join Existing or Form a New CFD**
- **City and JARPD Continue to Work Together to Ensure Conditions are Placed on Property and Met Prior to Issuing Building Permits**



***Serving the
Community
Since
1984***